



Participating in the 72nd IFLA General Conference and Council

The 72nd General Conference and Council of IFLA World Library and Information Congress (IFLA 2006 SEOUL) was held from August 20 to 24, 2006 in Seoul, Korea. The NDL held a pre-conference, sent 18 delegates, participated in the exhibition and held professional tour. We report these activities.

Pre-conference of the IFLA World Library and Information Congress: Preservation and Conservation in Asia

The Pre-conference was held from August 16 to 17, 2006 at the NDL. The IFLA Preservation and Conservation Section, Asia and Oceania Section, IFLA/PAC Core Activity and the NDL jointly hosted this conference. 204 people (54 from overseas countries) participated on the 16th and 193 (52 from overseas countries) on the 17th. Guided tour of the stacks and the Preservation Division of the NDL was also held on the 16th and 34 people participated. Details of the Program can be seen [here](#).

IFLA 2006 SEOUL

Presentation papers

The NDL sent 8 presenters to the sections and satellite meetings. They reported the current state of the NDL and Japan. The audience reacted favorably and asked many questions, especially in the 78th meeting (Government Libraries with Social Science Libraries) and the 117th meeting (National Libraries).

Section meetings

- 77. UNIMARC
[Japanese scripts and UNIMARC \[PDF Format, 194KB\]](#)
Naoko HARAI
- 78. Government Libraries with Social Science Libraries
[The Japanese Government Libraries Network: serving the customers in the new era \[PDF Format, 137KB\]](#)
Mika LAWLER
- 79. Newspapers
[Microfilming and Cataloging the Newspapers in the National Diet Library \(NDL\) \[PDF Format, 97KB\]](#)
Keiyu HORIKOSHI
- 109. Bibliography
[Japanese National Bibliography in the digital environment \[PDF Format, 64KB\]](#)
Yukio YOKOYAMA

- 117. National Libraries

[Dynamic Transformation of the National Diet Library: From the Researcher's Library to the Library for All \[PDF Format, 123KB\]](#)

Kenji UETSUKI

Satellite meetings

- 1. Resource Sharing, Reference and Collection Development in a Digital Age – a practical approach

Collaborative Reference Database Project ([text,presentation file](#))

Tomoko KITAGAWA

- 5. (Annual) Satellite Meeting Parliamentary Libraries

Developing the research service in the National Diet Library of Japan

Jun ASHIDA

- 6. Scholarly Information on East Asia in the 21st Century

[NDL \(National Diet Library, Japan\) information services on Asia – focusing on Internet information \[PDF Format, 197KB\]](#)

Taketoshi ISHIKAWA

[up](#)

Participation in the exhibition

The NDL participated in the international library trade exhibition which was held at the Congress venue in conjunction with the Congress from August 20 to 23. Japan Library Association (JLA), National Institute of Informatics (NII) and Japan Science and Technology Agency (JST) also participated. Four exhibitors from Japan were side by side and showed the current state of Japanese libraries and information services.

The NDL exhibits included its unique traditional conservation methods as well as the introduction of various digital library services. Under the theme "conservation and preservation," we exhibited various Japanese papers and mounting brushes for mending, containers for preservation (phase box, preservation wrapper and polyester film), panels on the dissemination of acid-free paper and so on. On the other side we introduced our digital library services using PCs and a panel. We also showed the introduction video of the NDL and distributed pamphlets.

Professional tour

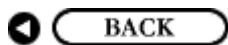
On August 27 and 28, the NDL and the JLA held a professional tour for participants of the joint session of the Reading Section and the Libraries for Children Section in Seoul. The participants visited the International Library of Children's Literature (ILCL, Branch of the NDL), Tokyo Children's Library, a private library in Nakano Ward in Tokyo, the Kodaira City Library, a public library in a suburb of Tokyo, and Akasia Bunko Library, a unique Japanese private home library for children.

After the tour, one of the participants, Ms. Patricia Muller, Children's and Youth Services Consultant working for the Library Development and Networking Division in the Library of Virginia, delivered a lecture at the Japan Library Association on "the possibility of attractive young adult services."

More details are published in [NDL Monthly Bulletin](#) no.548 and 549, November and December 2006 (in Japanese).

[up](#)

NEXT 



The 10th Mutual Visit Program between the National Diet Library and the National Library of Korea September 2006

The 10th mutual visit program of [the National Library of Korea \(NLK\)](#) and [the National Diet Library \(NDL\)](#) was held in Seoul from September 19 to 26, 2006. Headed by Mr. Toshiyuki Yamada, Director of Modern Japanese Political Documents Division, Reference and Special Collections Department, this delegation had the following other members: Ms. Junko Hori, Assistant Director of Reference Service Planning Division, Reference and Special Collections Department, and Ms. Satoko Yoshima, Chief of Network Section, Library Support Division, Projects Department, Kansai-kan of the National Diet Library. For previous programs, please see [here](#).

The main theme of this year's program was "Reference Services in the Digital Information Age: Focusing on Construction of a Cooperative Digital Reference Network." Two seminars were held on the main theme.

Seminar I :	Keynote speeches
	1) "Establishment of the National Library's Role for Improving Competitiveness of Libraries" by Ms. Chi-Ju Lee, Director of Library of Service Department, NLK 2) "National Diet Library's Activities over the Past Year" by Toshiyuki Yamada, NDL

Seminar II :	Reports on the Main Theme
	1) "From Digital Reference Service to Cooperative Digital Reference Service" by Ms. Soo-Jeong Kim, Public Service Division, NLK 2) "Cooperative Reference Database Project" by Satoko Yoshima, NDL

The delegation also visited [the National Assembly Library](#) and National Library for Children and Young Adults in Seoul, [Inha University Library](#) in Incheon, and [Korea Institute of Science and Technology Information](#) in Daejeon.

More details of this program will be published in the NDL Bulletin no. 550, January 2007 (in Japanese).



NDL delegation in the National Library for Children and Young Adults, Seoul (from left: Mr. Yamada, Ms. Yoshima, Interpreter, Ms. Hori)

◀ **BACK**

NEXT ▶

[up](#)



NDL Statistics FY2005

This is an abridged translation of the series articles "Excerpts from the Annual Report of the NDL, FY2005: statistics" in the NDL Monthly Bulletin No. 546 and 547 (September – October 2006).

The NDL compiles and publishes an Annual Report each year giving the major achievements and statistics of the previous fiscal year. This Annual Report is submitted to the Diet and also distributed to major libraries and related institutions in Japan. It has been available also on the NDL website since FY2002 ([Japanese only](#)).

We started a new statistics system in FY2005. The new statistics are maintained to collect common data for service and work. The main change in the system is that it sets up the same statistics form in the main three facilities (Tokyo Main Library, Kansai-kan and ILCL) for the same services and works, complying with international standards to assure the accuracy of the statistics and to facilitate the comparison between the libraries inside and outside Japan and adding the statistics of services for the digital library. The following are statistics abstracted from the Annual Report FY2005.

Contents

- I. [Collection development and provision of bibliographic information](#)
 - 1. [Collections](#)
 - 2. [Acquisition](#)
 - 3. [Collection of the digital library](#)
 - 4. [Provision of bibliographic information](#)
- II. [Services for the National Diet](#)
 - 1. [Legislative research services](#)
 - 2. [Library services](#)
- III. [Services for the executive and judicial agencies](#)
- IV. [Services for the general public](#)
 - 1. [Services for remote users](#)
 - a. [Interlibrary loan](#)
 - b. [Copying services for remote users](#)
 - c. [Reference services](#)
 - 2. [On-site services](#)
 - a. [Opening days, number of visitors and circulation](#)
 - b. [Copying services](#)
 - c. [Reference services](#)
 - d. [Characteristics of each facility](#)
 - 3. [Services in Special Materials Rooms](#)

I. Collection development and provision of bibliographic information

1. Collections

The NDL collects various materials published inside and outside Japan.

<Table1> [Materials held by the NDL](#)

a. Books (volumes)

Books in Japanese and Western Languages	289,868
Serials in Japanese and Western Languages	4,326
Newspapers	194
Non-book materials	143,381
Articles from Japanese periodicals	562,544

b. Serials (items)

Periodicals	Japanese	4,879,601
	Foreign	2,822,607
	Subtotal	7,702,208
Newspapers	Japanese	2,422,532
	Foreign	1,093,178
	Subtotal	3,515,710
Total		11,217,918

c. Non-book materials

Microfilms (reels)	474,314
Microfiches (sheets)	7,652,295
Microprints (sheets)	300,108
Video discs (items)	48,679
Video cassettes (items)	12,426
Slides (sheets)	137,082
Phonographic records (sheets)	533,803
Cassette tapes (items)	24,765
Open tapes (reels)	23,215
Magnetic tapes (reels)	81
Magnetic discs (items)	1,707
Optical discs (items)	57,106
IC cards (items)	514
Maps (sheets)	450,310
Maps (volumes)	45,603
Musical scores (sheets)	10,020

Musical scores (volumes)	2,214
Card-form materials (items)	27,516
Still images (items)	110,564
Doctoral dissertations (titles)*	454,465
Manuscripts (items)	270,040
Newspaper clippings (articles)	2,009,226
Braille resources and large print editions (volumes)	26,075
Others (items)	2,827

*Foreign doctoral dissertations are not included in the number.

[up](#)

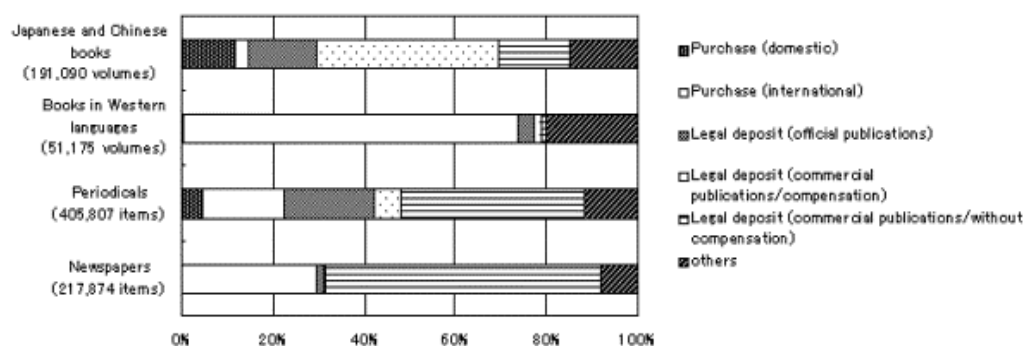
2. Acquisition

The National Diet Library collects materials by purchase, legal deposit (from the national or local government and private publishers), donation (from individuals and groups inside and outside the country) and exchange (with foreign governments and international organizations).

<Table 2> Number of materials newly accessioned in FY2005

Japanese and Chinese books (volumes)	191,090
Books in Western languages (volumes)	51,175
Periodicals (items)	405,807
Newspapers (items)	217,874
Microfilms (reels)	194,601
Microfiches (sheets)	133,996
Video discs (DVD-V, LD, etc.) (items)	7,559
Video cassettes (items)	2,122
Phonographic records (sheets)	15,431
Optical discs (CD-ROM, DVD-ROM, etc.) (items)	7,545

<Chart 1> Ratio of each acquisition method



[Click for a larger image.](#)

3. Collection of the digital library

The NDL has been developing the digital library in which digital materials are available directly from the NDL website.

[Rare Books Image Database](#), [Digital Library from the Meiji Era](#), [Web Archiving Project \(WARP\)](#), and [Digital Library of Children's Literature](#) are available.

<Table 3>Provision of digital materials

	Provided Titles	New Titles
Rare Books Image Database	860	44
Digital Library from the Meiji Era	39,155	3,694
WARP	3,388	554
Digital Library of Children's Literature	1,197	875

4. Provision of bibliographic information

The NDL compiles the Japanese National Bibliography and provides it on its website ([Japanese only](#)). [NDL-OPAC](#), the online catalog system, is also available on the Internet. This year, we worked out the policy for the treatment of personal information, and also considered the proper response to 13-digit ISBN.

<Table4> Number of Bibliographic data added in FY2005

Books in Japanese and Western Languages	289,868
Serials in Japanese and Western Languages	4,326
Newspapers	194
Non-book materials	143,381
Articles from Japanese periodicals	562,544

<Table5> NDL-OPAC and Asian Language materials OPAC coverage

	Bibliographic data	Records
	Japanese books	3,326,558
	Books in Western languages	1,075,360
	Japanese Serials	127,445
	Serials in Western languages	55,912
	Electronic resources	21,573
	Japanese and Chinese old materials	64,322
	Doctoral dissertations	360,978
	Maps	105,162

NDL-OPAC	Audiovisual materials	58,623
	Ashihara Collection	67,719
	Standards / Technical Reports	1,956,574
	National Union Catalog of Braille and Recorded Books in Japan	330,714
	Materials related to the Allied Occupations of Japan*	277,490
	Prange Collection*	32,227
	Subtotal	7,860,657
	Articles from Japanese periodicals	7,037,440
	Total	14,898,097
Asian Language Materials OPAC	Books	187,896
	Periodicals	6,600
	Newspapers	385
	Total	194,881

*Data available only inside the library (i.e. not available on the Internet)

[up](#)

II. Services for the National Diet

The NDL provides legislative research services and library services for the National Diet members and others connected with the Diet.

1. Legislative research services The Research and Legislative Reference Bureau of the NDL conducts research on politics, economy, and social affairs inside and outside Japan using the NDL collections and databases. The total number of researches conducted by the Research and Legislative Reference Bureau in FY2005 was 40,855. Among them, researches conducted for Diet members and Diet-related people are shown in <[Table 6](#)>.

In February 2006, we developed new guidelines for services for the National Diet to enhance and strengthen its functions.

<**Table 6**> **Legislative research conducted for the Diet members and other Diet-related people**

Client		Members of the House of Representatives	Members of the House of Councillors	Ex-Diet Members	Secretariats	Political parties	Total
Number of cases		22,115	15,309	1,621	493	1,317	40,855
Category	Analysis	0	2	0	1	0	3
	Research	17,807	12,354	1,204	473	1,176	33,014
	Literature	4,308	2,953	417	19	141	7,838

Diet members	11,713	144	11	54	0	17	8	0	0	11,947
Diet-related people	438	5,491	28	4	0	0	0	0	3	5,964
Total	12,151	5,635	39	58	0	17	8	0	3	17,911

up

III. Services for the executive and judicial agencies

The NDL extends its services to the executive and judicial agencies of Japan chiefly through its Branch Libraries established within the government ministries and agencies and the Supreme Court. There are 26 Branch Libraries and 6 sub-branches as of October 2006.

<Table 9> Branch Library services

Branch library	Visitors	Circulation persons	Circulation volumes	Copying	Reference	Note
Board of Audit Library	-	3,339	6,273	3,130	2,384	
National Personnel Authority Library	3,052	1,613	4,849	0	429	
Cabinet Legislation Bureau Library	-	435	945	0	150	
Cabinet Office Library	15,589	5,308	11,452	1,570	744	
Library of Science Council of Japan	923	8	14	-	11	
Imperial Household Agency Library	-	2,145	11,753	2,770	480	
Fair Trade Commission Library	-	1,958	4,052	-	198	
National Police Agency Library	-	800	1,305	454	1,084	
Defense Agency Library	27,103	6,115	9,132	681	8,102	
Financial Services Agency Library	-	2,615	5,753	-	254	
Ministry of Internal Affairs and Communications Library	5,556	3,542	6,698	-	1,327	
Statistical Library of Ministry of Internal Affairs and Communications	5,106	1,439	4,189	517	7,059	
Ministry of Justice Library	20,976	4,784	11,273	-	492	

Ministry of Foreign Affairs Library	35,852	5,422	9,537	715	2,861	
Ministry of Finance Library	-	4,369	16,654	-	8	
Ministry of Education, Culture, Sports, Science and Technology Library	-	4,484	9,757	1,741	911	
Ministry of Health, Labour and Welfare Library	10,568	2,285	6,215	-	6,180	
Ministry of Agriculture, Forestry and Fisheries Library	30,366	5,712	12,777	10,165	14,869	Including 2 sub-branches
Forestry Agency Library	7,066	1,421	2,650	388	1,251	
Ministry of Economy, Trade and Industry Library	8,163	3,170	7,619	1,508	3,968	
Patent Office Library	5,844	807	1,324	5,799	1,794	
Ministry of Land, Infrastructure and Transport Library	19,653	6,169	12,893	28,563	3,843	Including 3 sub-branches
Meteorological Agency Library	2,740	542	873	1,455	10,689	
Japan Coast Guard Library	1,355	531	751	213	111	Including a sub-branch
Ministry of the Environment Library	1,714	359	793	-	985	
Supreme Court Library	-	8,260	18,452	6,826	6,343	
Total	201,626	77,700	178,241	66,495	76,527	

Note: “-” are uncounted items.

[up](#)

IV. Services for the general public

Services for the general public are offered in the Tokyo Main Library, Kansai-kan, International Library of Children’s Literature and Toyo Bunko. These facilities offer services for both remote and on-site users.

In October 2002, the Tokyo Main Library and the Kansai-kan started a user registration system to improve the convenience of both remote and on-site services. Once registered, a person can enter the library with simplified procedure and also request copying service via the Internet. There are 4,901 registered libraries (FY2004 was 4,574) and 97,425 individuals (64,085) as of FY2005. At the Tokyo Main Library, applications submitted by individual visitors increased 18% from FY2004.

1. Services for remote users

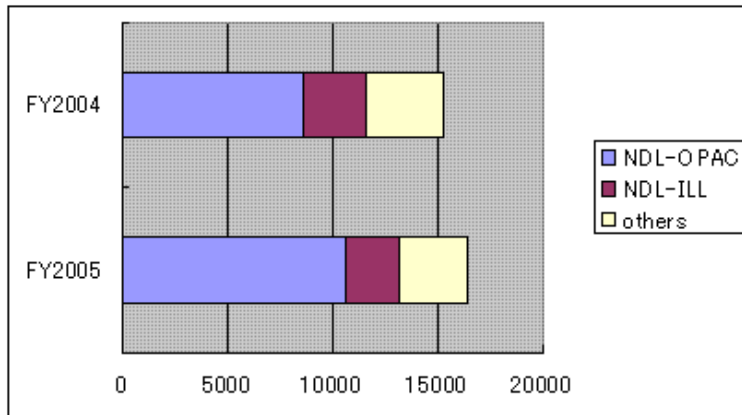
a. Interlibrary loan

The NDL lent out 16,498 materials to 3,383 institutions and libraries including 94 new member institutions and libraries in FY2005. They can make a request via NDL-OPAC in addition to postal

mail, fax and through the NDL-ILL system. The number of requests via NDL-OPAC was 10,580 (64 % of all the requests) in FY2005 while 8,564 (56 %) in FY2004.

ILCL lent out 348 materials (FY2004 was 340) to public libraries. And in November 2004, a Book Sets Lending Service for school libraries was started and 10,491 materials were lent out (FY2004 was 9,288)

<Chart 2> Number of interlibrary loans in FY2005



b. Copying services for remote users

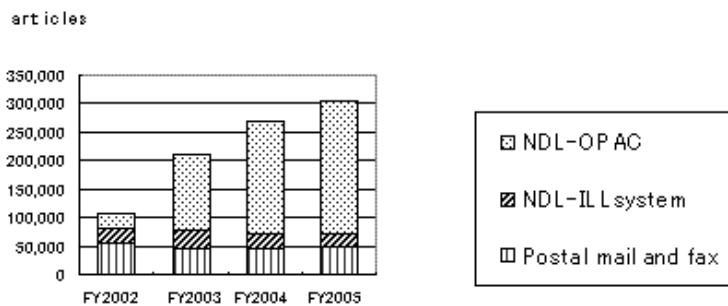
We received 307,145 articles for copying service in FY2005 (268,214 articles in the previous year). From FY2005, we include the number of articles requested at ILCL (991 articles).

We receive requests via NDL-OPAC as well as postal mail, fax, and the NDL-ILL*. The number of requests via NDL-OPAC comprised 76% of all the requests in FY2005 (73% in the previous year).

Notably increased are the requests from individual users.

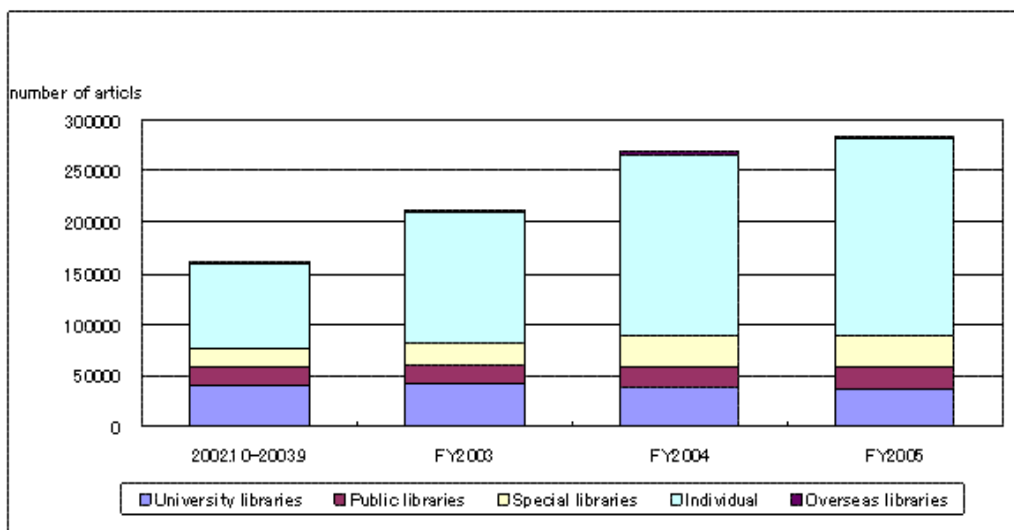
*NDL-ILL will be terminated on March 2007

<Chart 3> Number of articles requested for copying service from remote users



*From FY2002 to FY2004, the number shows the transaction, while FY2005 shows the acceptance.

<Chart 4> Number of articles requested for copying service from libraries and individual remote users



c. Reference services

Remote reference services are available by phone, letter, fax, or e-mail. In FY2005, there were 6,841 written (letter, fax, or e-mail) requests, a decrease from the previous year but the number of answered documents increased slightly.

Reference service by e-mail has been available to registered libraries in Japan and overseas users since October 2002. In FY2005, 57% of the requests from registered libraries in Japan were made by e-mail. This shows the application method is transferring to e-mail.

[up](#)

2. On-site services

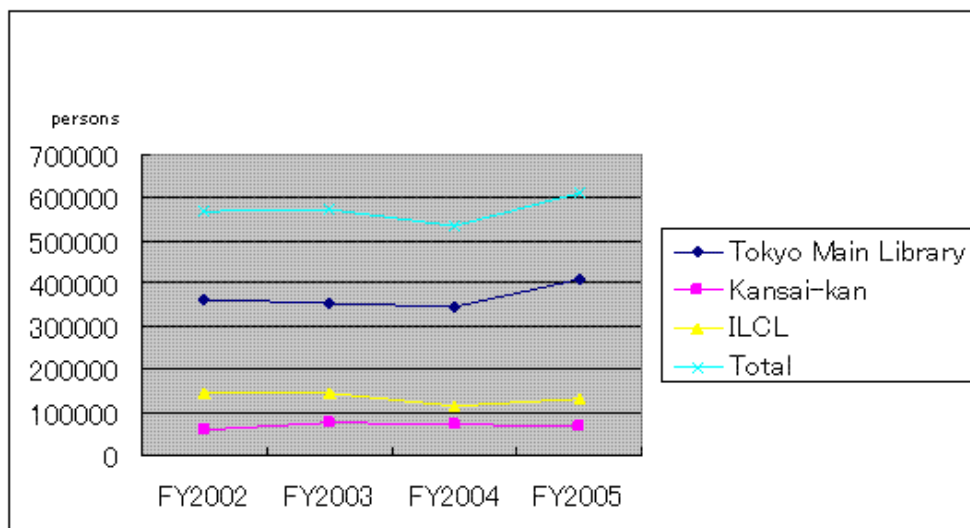
This was the first fiscal year to take the statistics under the same condition throughout the year after the Tokyo Main Library's renewal. Open days increased by 35 days this year at the Tokyo Main Library as all Saturdays and Mondays became open days. The actual service time was extended by 2 hours, which led to an increase of more than 60,000 visitors for the year.

a. Opening days, number of visitors and circulation

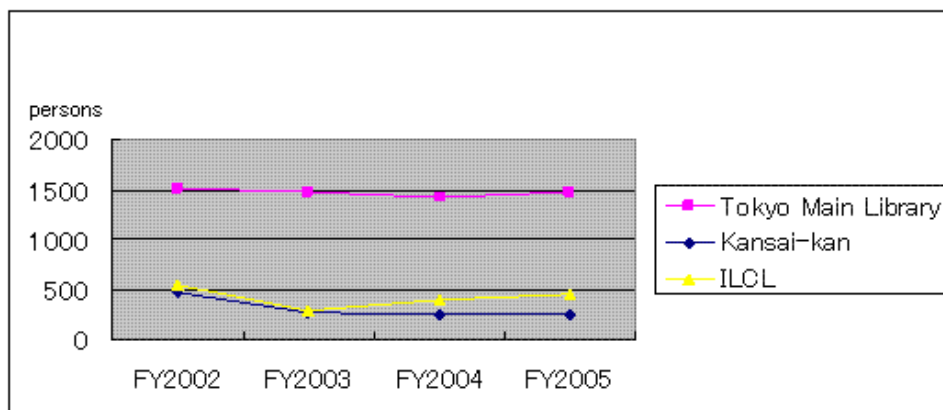
<Basic Data (FY2005)>

	Tokyo Main Library	Kansai-kan	ILCL
Opening days/ year	280	280	285
Visitors	410,505 (1,466/day)	69,476 (248/day)	130,877 (459/day)
Circulation (items)	2,177,383	94,315	39,905
Inter-site circulation (materials sent from Kansai-kan) (items)	6,355	-	-
Inter-site circulation (materials sent from Tokyo Main Library) (items)	-	2,401	-

<Chart5> Average number of the visitors (year)



<Chart6> Average number of the visitors (per day)



[up](#)

b. Copying services

The amount of copying counted by requests was 731,420 at the Tokyo Main Library (477,177 in the previous year), 63,176 at the Kansai-kan (57,807) and 8,562 at the ILCL (2,894).

c. Reference services

The number of reference replies for visitors was 467,511*at the Tokyo Main Library (195,678 in the previous year), 52,154 at the Kansai-kan (35,292) and 7,366 at the ILCL (5,248).

*From FY2005, assistance in using computers etc. is included.

d. Characteristics of each facility

Tokyo Main Library: With the renewal in October 2004, we started the service which makes a copying request for periodical index via NDL-OPAC available and can also receive the copy without circulating (online photoduplication request).

Kansai-kan: We made positive efforts in PR activities such as setting up library guides for workers at institutions and universities near the Kansai-kan.

ILCL: We held five exhibitions and related presentations this year. And for children and their parents, we held storytelling and reading events on Saturdays and Sundays.

3. Services in Special Materials Rooms

To provide the information rapidly to the users, we provide bibliographic data and search tools for specific themes. Especially, requests for providing information to general public users via the website

are increasing. There are contents such as "Introduction of the Reference Books" and "Bibliography of Persons in Modern Japanese Politics," to which theme and data have been added.

Related articles:

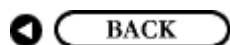
- [NDL Statistics FY2004](#)
- [NDL Statistics FY2003](#)
- [NDL Statistics FY2002](#)

[up](#)



National Diet Library Newsletter

No. 152, December 2006



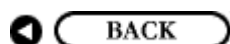
Extension of operational hours of the NDL-OPAC on the Internet

Along with updating system facilities and revising the manner of operation, the National Diet Library (NDL) will shorten the out-of-service hours of the NDL Online Public Access Catalog ([NDL-OPAC](#)) from 3 to 1.5 hours and extend its operational hours from Monday, January 8, 2007.

This change will make it more accessible for foreign users, especially those who live in North America where the NDL-OPAC is out-of-service during their day time.

Operational hours of the NDL-OPAC on the Internet (Japan Time; UTC+9)

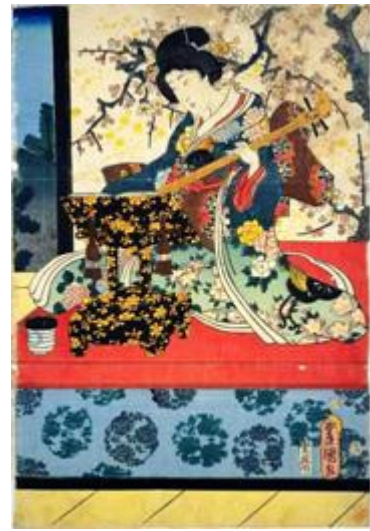
Present	From January 8, 2007
Mon. - Sat. 7:00 a.m. - 4:00 a.m. (28:00) Sun. 7:00 a.m. - 1:00 a.m. (25:00) * Till 22:00 p.m. on the third Sundays	Mon. - Sat. 7:00 a.m. - 5:30 a.m. (29:30) Sun. 7:00 a.m. - 1:00 a.m. (25:00) * Till 22:00 p.m. on the third Sundays





Selections from NDL Collection

Junitsuki no uchi moshun odori hajime: First dancing practice of the New Year in the twelve-month calendar



Set of three large-size (37.0×25.5cm) color woodblock prints (*nishiki-e*)

Artist: Utagawa Toyokuni III

Publisher: Tsutaya Kichizo

Published in 1854

Owned by the National Diet Library

This *nishiki-e* is one of a twelve-picture series depicting annual events and people's lives that changed with the seasons, from January to December, modeled on beautiful women in Edo (present-day Tokyo) in the early 19th century.

This picture represents January. The title is in the top left-hand corner. It shows two young women having their first dancing practice of the New Year to a shamisen accompaniment. The dance is "*Harukoma*" and it brings a wish for health and prosperity throughout the year.

The two dancers are each holding a horse's head puppet with a scarf representing a bridle. Their long-sleeved kimonos have a pattern of plovers, waterfowl which from ancient times have represented winter in Japan. Their red under-garments have a hemp-leaf pattern, a popular motif in those days as hemp is a strong fast-growing plant. Their black obi have swirls of water-waves. The screens in the background show young pines and full-blown ume (Japanese apricot) blossoms. The pine tree has a strong life force and signifies

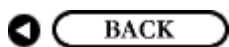
prosperity, while the ume, which blossoms in the coldest season, is the flower which celebrates the New Year in Japan. This happy and brilliant scene symbolizes the New Year.

At the bottom of the picture are printed the artist's name, the year of publication and the publisher's name, and also the name of the print engraver.

Utagawa Toyokuni III (1786–1864) was an *ukiyo-e* artist working around the same time as Utagawa Hiroshige (1797–1858) and Katsushika Hokusai (1760–1849). He was a prolific artist who produced many book illustrations as well as *ukiyo-e*.

*You can see the whole images of the twelve-month calendar in the [Rare Books Image Database](#) (Japanese only) in the NDL website: select [錦絵] and put [孟春] in the title box.
([How to use Rare Books Image Database](#))

[up](#)



National Diet Library Newsletter

No. 152, December 2006



Selected list of articles from NDL periodicals (Text in Japanese)

National Diet Library Monthly Bulletin

(Kokuritsu Kokkai Toshokan Geppo)

If you click the volume number of each issue, you can read the full-text of NDL Monthly Bulletin (no.517-). The text is provided in PDF format* (Japanese only).

*To see the full-text (PDF), you will need Adobe Acrobat Reader (free download). Click [here](#) to download. ([Adobe Website](#))

No. 549, December 2006 [[PDF Format, 1.5MB](#)]

- Libraries – Dynamic Engines for the Knowledge and Information Society: World Library and Information Congress –
Participating in the 72nd IFLA General Conference Part 2 [related article](#)
- The 33rd Conference of Directors of National Libraries (CDNL): Strengthen global cooperation – developments of digitization and national libraries
- Library and Research Services for Parliaments Section and the Law Libraries Section: current trends of legislative information services
- Meeting of PAC Directors and meetings related to the Preservation and Conservation Section: to comprehend current conditions of preservation of materials and to select countermeasures
 - Meetings related to cataloguing and bibliography: Voices from Asia
- Libraries for Children and Young Adults Section: reading for family bonding – libraries as a bridge
- National Libraries Section: national libraries – dynamic partners in the knowledge society
- Government Libraries Section: customer needs – engines for reforming government libraries and information centers
 - Newspapers Section: newspapers in East Asia
- Geography and Map Libraries Section: Which name? geographical naming of places
 - IFLA exhibition
 - Sketch of Seoul

- FY2006 meeting between NDL Librarian and directors of university libraries
 - <Announcement>
- Special exhibition "The 100th anniversary of the former Imperial Library building"
 - [related article](#)
 - Service at the year-end and New Year
- Exhibition at the International Library of Children's Literature: Look up at the Sky: Children's Books on the Sun, Moon, and Stars
 - Book Sets Lending Service to School Libraries of the International Library of Children's Literature: lending out of "Meet the World" set (suitable for senior children at elementary schools) starts
- Discontinuance of copying and interlibrary loan services via the NACSIS-ILL and the National Union Catalog Network
- Extension of operational hours of the NDL-OPAC on the Internet [related article](#)
 - <Invitation>
 - Training program on reference FY2006

No. 548, November 2006 [\[PDF Format, 1.9MB\]](#)

- Libraries – Dynamic Engines for the Knowledge and Information Society: World Library and Information Congress – Participating in the 72nd IFLA General Conference Part 1: Pre-conference "Preservation and conservation in Asia" and others [related article](#)
 - Pre-conference of IFLA 2006 Seoul "Preservation and conservation in Asia"
 - Satellite meeting "Resource Sharing, Reference and Collection Development in a Digital Age – a practical approach"
 - Satellite meeting "Scholarly Information on East Asia in the 21st Century"
 - Professional tour
 - Visiting maps & map related libraries of the U.S.
 - Training program on digitization FY2006
 - <Announcement>
 - Discontinuance of copying and interlibrary loan services via the NACSIS-ILL and the National Union Catalog Network
 - Small exhibition at the Kansai-kan "Robots assisting humans – robots for medicine and welfare"
 - Special exhibition "The 100th anniversary of the former Imperial Library building"
 - [related article](#)
 - Library closure at the year-end and New Year