

DESCRIPTIONS OF *COSMOPTERIX VICTOR*
STRINGER AND ITS ALLIED NEW SPECIES
(Lepidoptera, Cosmopterigidae)

By Hiroshi Kuroko

Hikosan Biological Laboratory of Kyushu University

Of the genus *Cosmopterix*, only two species, i.e. *C. victor* Stringer, and *C. fulminella* Stringer have been hitherto described from Japan. In the present paper the author describes the genital character of *victor*, as well as new species one each from Kyushu and Formosa.

I wish to express my sincere gratitude to Prof. T. Esaki, Prof. K. Yasumatsu, of Kyushu University for their constant encouragement, to Prof. S. Issiki, of the Prefectural University of Osaka for his kind guidance and assistance for the material and literature, to Mr. H. Yamamoto of Kyushu University for his advice in the terminology of male genitalia.

***Cosmopterix victor* Stringer (Pl. 2, figs. 1, 2, Pl. 3, fig. 3)**

Cosmopteryx victor Stringer, 1930, Ann. Mag. Nat. Hist., (10) 6:416; Yuasa & Kikuchi, 1939, Botany and Zoology, (7) 9:1614; Issiki, 1941, Icon. Jap., ed. 1: 1478; 1952, *ibid.* ed. 2:461.

Cosmopterix victor Stringer, Inoue, 1954, Check List Lep. Jap., 1: 73.

♂♀. 11-14 mm. Antennae: 4 apical joints white, then 5 black, 1 white, 1 black, 2 white.

Male genitalia: scaphium absent; gnathos paired and formed brachia, the right larger than the left, thickly, broad and rounded at the apex, imbricated; costal projection slender; valva trigonate, thickly haired; saccus, which is distinctive feature of this species, elongated towards posteriorly, spatulate; juxta triangulated; lobed projection (intersegmental membrane at between 8th sternum and saccus) large and broad; aedoeagus bulbed.

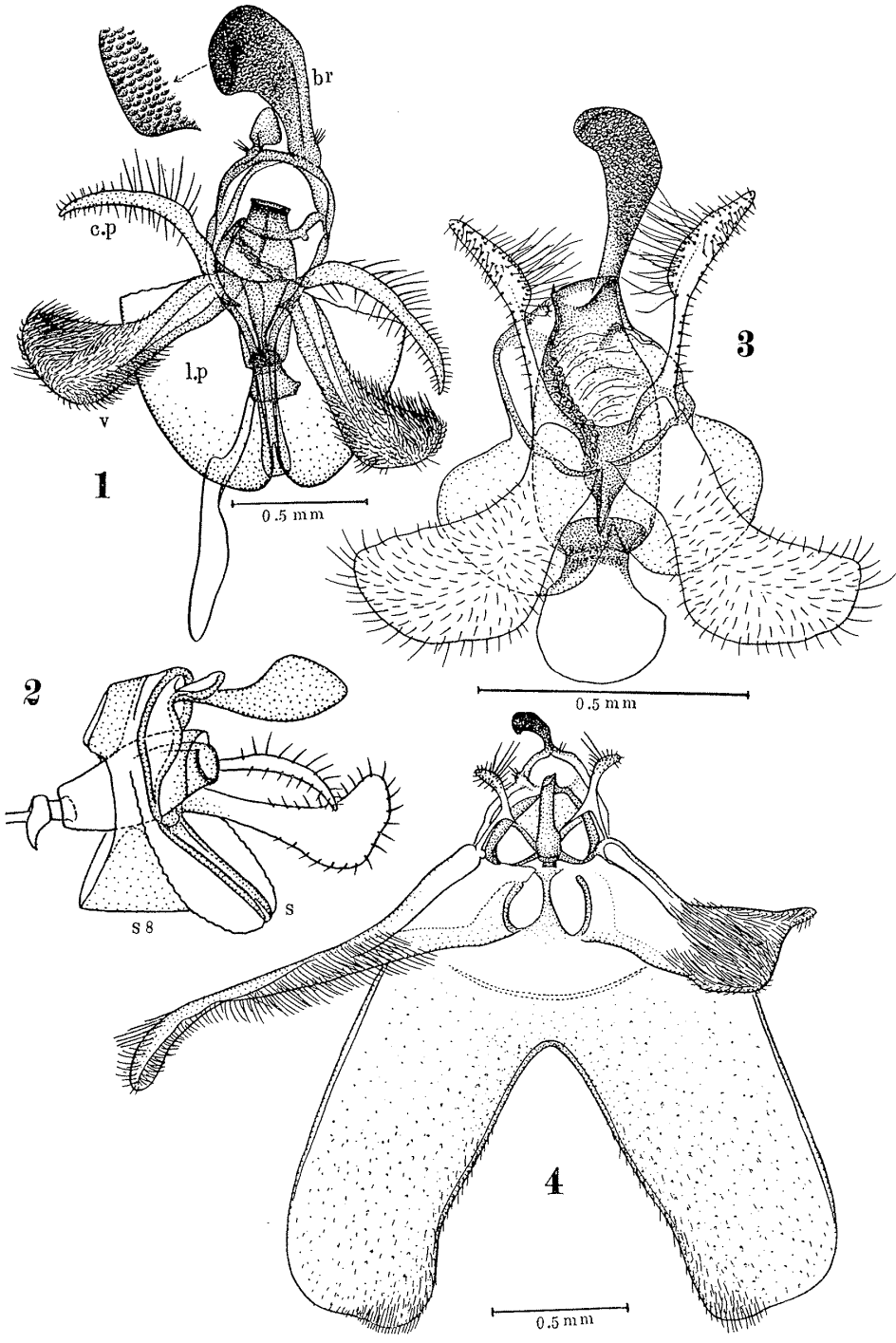
Female genitalia: ostium projecting, companulate, opening broad, edge loosely waved; signa two lobed, with minute serrate at edge of blunt end, sometimes recognized two spines at bount side, about 170 μ in length.

Host plant: I bred from larvae mining leaves of the following plants at Hikosan, Kyushu.

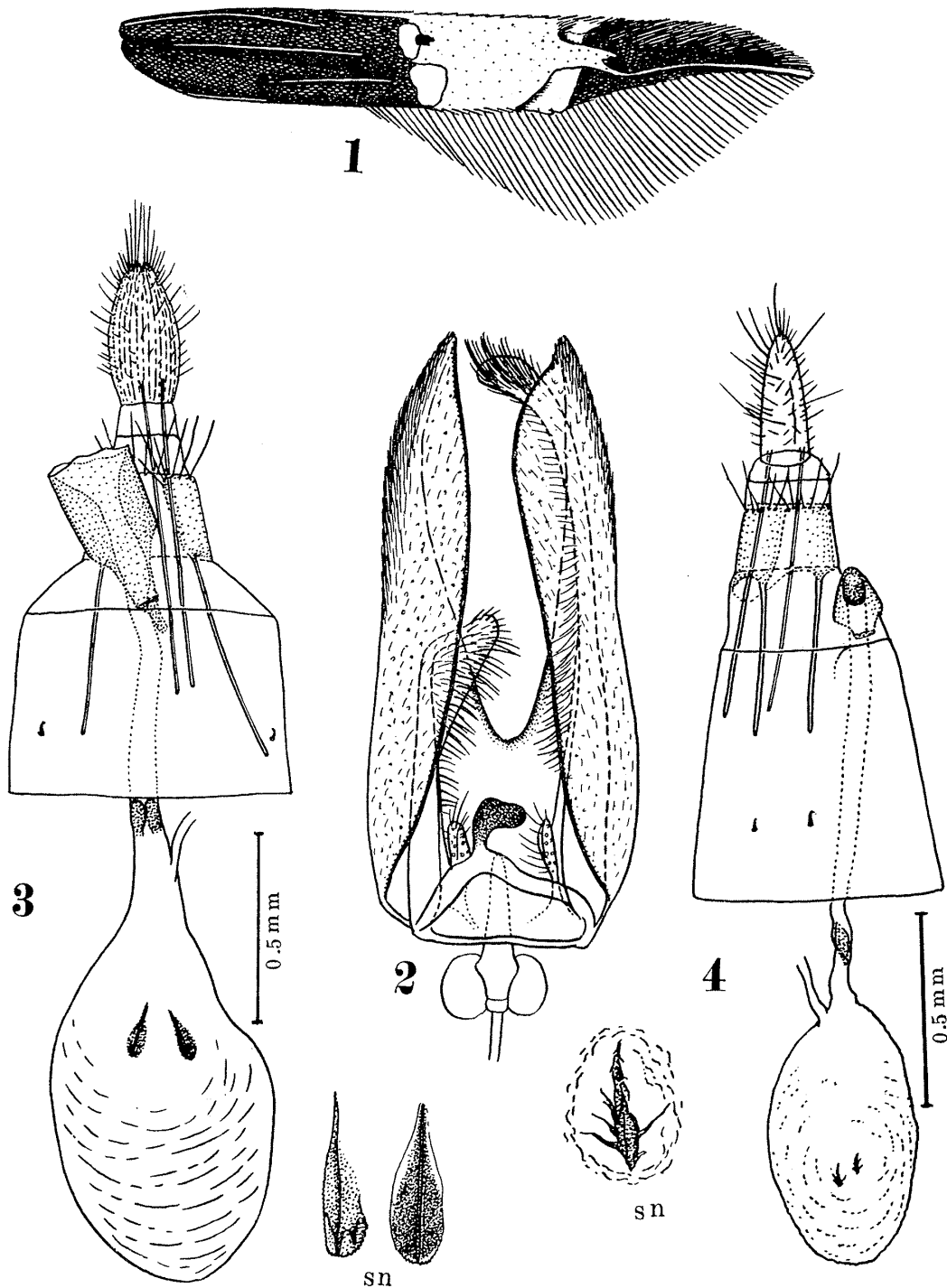
Sasa japonica Makino, *S. purpurascens* Ohwi, *Arundinaria pygmaea* Mitford var. *glabra* Ohwi, *Phyllostachys bambusoides* Sieb. et Zucc. var. *aurea* Makino.

***Cosmopterix phyllostachysea* sp. nov. (Pl. 2, fig. 4, Pl. 3, figs. 1, 2, 4)**

♂♀. 11-12 mm. Head & thorax: bronzy-fuscous tinged with olive, with three fine white lines, face bronzy-whitish. Palpi bronzy-fuscous lined with white. Antennae bronzy-fuscous, beneath white, above dotted and lined with white towards base, 4 apical joints white, then 5 black, 1 white, 1 black, 3 white (rarely 2.5).



Kuroko — *Cosmopterix victor* Stringer and its allied new species



Kuroko — *Cosmopterix victor* Stringer and its allied new species

Abdomen: bronzy-fuscous, dorsal area slightly tinged with ochreous, sometimes indistinct; anal tuft of male exceedingly protruded, dark ochreous; ventral side silvery-white.

Posterior tibiae: blackish with white basal, median, subapical and apical rings; spurs silvery-white lined with blackish.

Forewings: bronzy-fuscous tinged with olive, a fine white oblique subcostal line from base to 1/3 and a fine median line commencing far a short distance from base to beyond subcostal line, a short fine subdorsal line from about 1/4 near band; costal edge white from 1/3 to band; a rather broad yellow post median band, margined anteriorly by two opposite adjacent pale golden-metallic spots, upper followed by a rather large black dot, lower large, between these yellow projection protrude but not beyond metallic spots, posteriorly by two pale golden-metallic spots, edged with a few dark scales, upper with white cilia on costa, lower conspicuously larger and oblique at anterior margin, between these a rather broad bifurcate yellow projection extends beyond metallic spots; from lower arm a fine sinuous white line along termen to apex; cilia pale fuscous. Hindwings and cilia pale fuscous.

Male genitalia: peculiar shaped; brachia and costal projection very small, the latter clavate; valva asymmetrical, the left long, the right short but broad; lobed projection extremely large and elongated, divided two rectangular laminae; saccus absent; aedoeagus very small and cylindrical.

Female genitalia: ovipositor conical; ostium very smaller than the former, lozenge; signa rooty-shaped, length 60 μ .

Habitat: Japan (Kyushu).

Holotype: ♂, Hikosan, Kyushu, 7 June 1955 (H. Kuroko).

Allotype: ♀, type-locality, 8 June 1955 (H. Kuroko).

Paratypes: 1 ♂, type-locality, 29 May 1955; 1 ♂, 31 May 1955; 1 ♂, 3 June 1955; 1 ♂, 4 June 1955; 1 ♀, 9 June 1955 (H. Kuroko).

Very closely resembles *victor*, but distinguishable by the difference of genitalic character and following external characters: number of white annulation of antennae, tinged with ochreous on dorsal area of abdomen, exceedingly protruded anal tuft of male, basal lines of forewings slightly longer.

I bred from larvae mining leaves of *Phyllostachys bambusoides* Sied. et Zucc. var. *aurea* Makino at Hikosan, Kyushu.

Cosmopterix issikiella sp. nov. (Pl. 2, fig. 3)

♂. 11 mm. Antennae: 4 apical joints white, then 5 black, 1 white, 1 black, 2 white.

Very closely related to *victor*, therefore cannot distinguished by external characters, but there are distinct differences in male genitalia.

Male genitalia: similar to *victor* but can be distinguished by following points: whole shape smaller; brachia slightly more slender; costal projection broad from middle towards apex; valva thinly haired; saccus absent; lobed projection smaller, aedoeagus larger.

Holotype: ♂, Kansirei, Formosa, 25 March 1935 (S. Issiki).

Explanation of Plates

Plate 2

- Fig. 1. *Cosmopterix victor* Stringer, male genitalia.
 Fig. 2. Ditto, lateral aspect.
 Fig. 3. *Cosmopterix issikiella* sp. nov., male genitalia.
 Fig. 4. *Cosmopterix phyllostachysea* sp. nov., male genitalia.

Plate 3

- Fig. 1. *Cosmopterix phyllostachysea* sp. nov., right forewing.
 Fig. 2. Ditto, male genitalia, dorsal aspect.
 Fig. 3. *Cosmopterix victor* Stringer, female genitalia.
 Fig. 4. *Cosmopterix phyllostachysea* sp. nov., female genitalia.

br: brachia, c. p: costal projection, l. p: lobed projection,
 s: saccus, s8: 8th sternum, sn: signum.

本邦未録のエゾカオジロトンボ (改称)

朝比奈正二郎

北海道釧路国標茶におられる飯島一雄氏の御好意で見ることの出来た蜻蛉類の中に、稍大型のカオジロトンボの1種があつた。これは東シベリアより満洲にかけて産する *Leucorrhinia intermedia* Barteneff と同定すべきもので、満洲産標本よりひと廻り大きい様である。満洲では真のカオジロトンボ (*L. dubia orientalis* Selys) と異つて低地の水域に産し、ハルビン市内の公園の池などにも見られたが、北海道からの発見は全く思いがけなかつた所で、飯島氏の御慧眼によつて発見されたことを大いに多としなければならない。和名は嘗て (1942) マンシウカオジロトンボと新称したが、今回上記の様に改めたい。

新たに邦産種に加えるトンボ1種

朝比奈正二郎

1956年の夏、藤岡和夫君が北海道内各地で採集された蜻蛉類を見せて下さつたが、分布上記録に値するものが少なからずあり、その中でも次の1種は現在の本邦版図内から未記録のものである。

Agrion hylas Trybom カラフトイトトンボ (改称)

1 ♂ 10. VII. 1956 北見市: 1 ♂ 22. VII. 1956 帯広.

本種は淡青色に黒条のある大型のイトトンボで、東シベリア、北満洲、樺太などに分布する。和名は嘗て (1942) カラフトオオイトトンボとつけたがこゝで短縮改称する。藤岡君の労を感謝し、とりあえずここに記録する。