

Kontyû, 33 (2) : 221-222. 1965

A NEW GENUS AND SPECIES OF THE HERMINIINAE,
NOCTUIDAE, FROM JAPAN (Lepidoptera)

By Hiroshi Inoue

4157, Kugenuma, Fujisawa, Kanagawa Pref.

Genus *Pseudalelimma* gen. nov.

Palpus extremely long, 2nd joint reaching far above vertex of head, 2nd and 3rd joints smoothly scaled, in female a little shorter and more slender than in male. Proboscis developed. Antenna in male unipectinate, with a pair of long spines from each segment, those on outer or pectinated side arising from dorsal surface of the pectinations, and those on inner or dentate side and extreme basal and apical segments of outer side from behind dentations, in female filiform, minutely ciliate, with a pair of short spines on each segment. Foreleg modified in male, tibia hairy, with a large sheath covering long 1st tarsal joint and enclosing a tuft of scales, hindtibia in both sexes with two pairs of spurs, tarsi spined, excepting foreleg in male. Thorax and abdomen not crested.

Forewing with costal margin nearly straight, apex pointed, termen smoothly gibbous at middle; R_1 from middle of cell, free, R_2 and R_3 long-stalked, arising from midway between the origin of R_1 and upper angle of cell, R_4 and R_5 long-stalked, arising from upper angle, R_3 and R_4 anastomosing for a long distance to form an elongate areole, M_1 from a little below upper angle, M_2 close to M_3 at its origin, DC_3 vestigial. Hindwing with termen smoothly rounded, $Sc + Rs$ connected with cell for a short distance at near base, Rs and M_1 connate or short-stalked, M_2 from near M_3 , M_3 and Cu_{1a} connate or a little separate.

Type species: *Pseudalelimma miwai* sp. nov.

Similar to *Alelimma* Hampson (1895, Fauna Brit. Ind. Moths, 3: 47), type species *A. pallidifusca* Hampson from Naga Hill, in the shape of the wings and in the long palpus, but distinct from it as follows; forewing with R_2 and R_3 , R_4 and R_5 stalked, then R_3 and R_4 connected to form an areole, while in *Alelimma* R_3 , R_4 and R_5 stalked, not forming the areole.

Pseudalelimma miwai sp. nov.

Body and wings, above and beneath pale yellowish brown, remind us of certain species of discoloured Emeralds (Geometridae, Geometrinae), viz. *Geometra papilionaria*, *Tanaorhinus reciprocatus*, etc., forewing with subterminal line of paler ground colour, edged proximally with dark grey shading, nearly straight, excepting a weak incurve between M and hind-margin; hindwing with similiar line from costal margin near apex to tornus, but this line is indistinct or completely vanished especially in female. Under surface, forewing darker from base to subterminal line, excepting costal area, lines of upper surface weakly reproduced.

Length of forewing: ♂ ♀, 20-25 mm.

Male genitalia show the characteristics of the typical Herminiinae with simple, cleft valva.

Holotype (♂); Sakamoto Valley, Inabe County, Miye Pref., 16. vi. 1964 (O. Yamada), in coll. H. Inoue. Paratypes; type-locality, 16 and 19. vi. 1964, 9 ♂, 10 ♀ (O. Yamada); Mt. Gozaisho, Miye County, Miye Pref., 20–21. vi. 1963, 1 ♀ (H. Inoue); Mt. Fujiwara, Inabe County, Miye Pref., 6. vii. 1957, 1 ♂, 1 ♀ (Y. Miwa); Mt. Fujiwara, Inabe County, 7. vii. 1962, 1 ♀ (Z. Yamashita et al.). The paratypes are preserved in the following museums and private collections; Miye Prefectural Museum (1♂, 1♀), British Museum (Nat. Hist.) (1♂, 1♀), Mr. S. Sugi (2♂, 2♀), and H. Inoue (6♂, 8♀).

摘 要

本文では、ヤガ科クルマアツバ亜科に属する新属新種を記載した。

Pseudalelimma miwai Inoue オオキイロアツバ (新称)

下唇鬚はきわめて長く、上方に突出する。触角♂は単櫛齒状、各節から1対の針状物を出し、♀は微毛状、針状突起は短い。♂の前脚脛節からは、大きな付属枝が出て、鞘状をなして、長い第1跗節をおおい、なかに長毛の束を含んでいる。

体翅ともうすい黄褐色で、丁度アオシヤクのある種（例えばカギバアオシヤク）が腿色したときのような色彩。前翅にはほぼ一直線の亜外縁線があり、内側を暗色で縁取られ、後翅にも個体によつては更に弱い亜外縁線をもつ（♀では完全に消失していることが多い）。

前翅長：20—25 mm.

産地。三重県員弁郡坂本谷，同郡藤原岳，三重郡御在所山。

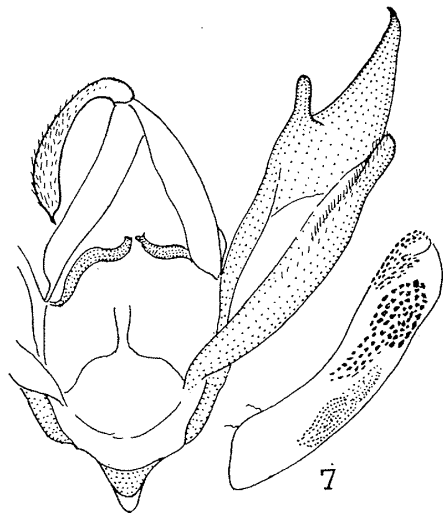
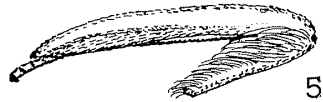
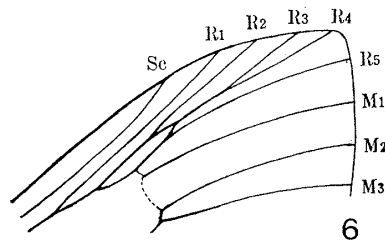
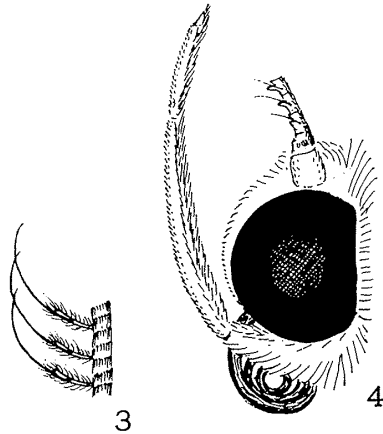
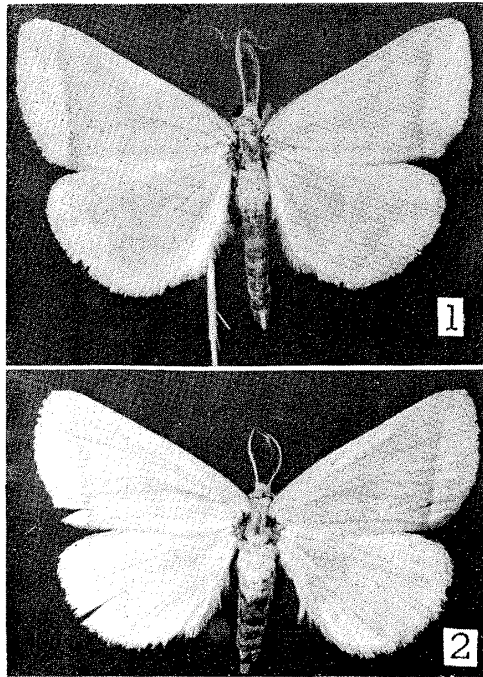
本種は、目下の処、三重県北部の鈴鹿山脈にそつた地域でだけ発見された特異なクルマアツバであつて、山下他，1963，鈴鹿山脈の昆虫，p. 135, 227, pl. 11, f. 4 (♂) に *Pelamia* sp. として藤原岳から記録され、図示されている。新種名を献げた三輪博士が最初の発見者であることについては、三輪勇四郎博士還暦記念随筆集，pp. 56—57, 1963 に、山下善平博士によつて記述されている。上述の出版物に記録された日付と、杉繁郎氏及び筆者の実際に見た標本とで、日付に若干のずれがあるが、ここではラベルに従つて記録した。

標本の蒐集に当り、援助を受けた三重大学の山下善平博士，三重県立博物館の富田靖男氏，御在所ロープウェイの市橋甫氏，多数の材料を送つていただいた山田乙三氏，ならびに三重昆虫談話会の大川親雄氏，坂部元広氏に厚く御礼申し上げる。

Explanation of Plate 10

Pseudalelimma miwai gen. et sp. n.

Fig. 1. Holotype, ♂. Fig. 2. Paratype, ♀. Fig. 3. Middle segments of antenna, ♂. Fig. 4. Head, ♂. Fig. 5. Foretibia and tarsus, ♂. Fig. 6. Venation of forewing, apical half. Fig. 7. Male genitalia. Fig. 8. Female genitalia.



Inoue—*Pseudalelimma miwai* gen. et sp. n.