

Kontyû, 33 (3) : 351-363. 1965

日米科学協力研究：太平洋地域の昆虫類の地理的分布と生態
Japan-U. S. Co-operative Science Program: Zoogeography and
Ecology of Pacific Area Insects

LIST OF MOTHS FROM THE RYUKYU ISLANDS
TAKEN BY THE 1963 AND 1964 FIELD WORKS,
WITH DESCRIPTION OF A NEW SPECIES
AND SUBSPECIES (Lepidoptera)

By Hiroshi Inoue

4157, Kugenuma, Fujisawa, Kanagawa Pref.

In this paper will be listed some macro-heterocera belonging to "Bombyces & Sphinges" collected by the following members and by myself of the above-captioned project while engaging in collecting insects on the Ryukyu Islands in autumn 1963 and spring 1964. They are: Mr. H. Hasegawa, Prof. Y. Hirashima, Prof. S. Miyamoto, Mr. Y. Miyatake, Dr. K. Morimoto, Mr. G. A. Samuelson, and Prof. T. Shirôzu. Further incorporated in it are Dr. S. Asahina's, Mr. S. Azuma's, and Prof. R. Kano's collection individually donated to me, Messrs. I. Kishida's Y. Nagayoshi's and T. Nagano's collection offered by Mr. K. Jinbo, and also Mr. Arita's collection belonging to Ehime University with kind permission of Prof. T. Ishihara. In a species of the Epiplemidæ my Formosan collection in summer 1964 for the same project is included.

My hearty thanks are due to the above-mentioned entomologists. Acknowledgement is also made of the partial financial support for this investigation through a grant from the Japan Society for the Promotion of Science, as part of the Japan-U. S. Co-operative Science Program.

Family SPHINGIDAE スズメガ科

1. *Cephonodes hylas hylas* Linné オオスカシバ

OKINAWA: Nakagusuku, 29. iv. 63, 1♀; Yona, 25. v. 63, 1♀ (Y. Arita). ISHIGAKI IS.: Takeda, 3. v. 63, 1♂, 1♀ (Y. Arita). IRIOMOTE IS.: Sonai, 21. v. 63, 2♀; Inaba, 19. v. 63, 1♀ (Y. Arita); Tôro-gawa, 17. iii. 64, 2♂ (T. Shirôzu). YONAGUNI IS.: Urabe-dake, 12. v. 63, 1♂ (Y. Arita).

2. *Cephonodes xanthus* Rothschild & Jordan リユウキユウオオスカシバ

OKINAWA: Yona, 25. v. 63, 1♀ (Y. Arita).

3. *Macroglossum stellatarum* Linné ホウジャク

ISHIGAKI IS.: Ibaruma, 27. x. 63, 1♂ (G. A. Samuelson).

4. *Macroglossum bombylans* Boisduval ヒメクロホウジャク

ISHIGAKI IS.: Hirano, 27. x. 63, 1♂ (Y. Hirashima).

5. *Macroglossum pyrrhostictum* Butler ホシホウジャク

OKINAWA: Yona, 19. x. 63, 1♀ (Y. Hirashima); ditto, 26. xi. 63, 1♂, 2♀; Nago, 28. xi. 63, 3♀ (H. Inoue). MIYAKO IS.: Sakita-gawa, 22. xi. 63, 1♀ (H. Inoue). ISHIGAKI IS.: Omoto-dake, 10. x. 63, 1♂; Ishigaki City, 13. x. 63, 1♂ (Y. Hirashima); Yoshihara, 16. x. 63, 1♂ (K. Morimoto); Mt. Banna, 27-31. x. 63, 1♂ (Y. Hirashima & G. A. Samuelson); Barubido, 18. xi. 63, 1♀; Ura-omoto, 20. xi. 63, 1♂, 2♀ (H. Inoue). IRIOMOTE IS.: Sonai, 6. x. 63, 1♂ (K. Morimoto). YONAGUNI IS.: Tabaru-gawa, 14. v. 63, 1♀ (Y. Arita).

6. *Macroglossum troglodytus* Boisduval チビホウジャク (新称)

OKINAWA: Yona, 26. v. 63, 1♂ (Y. Arita); Ishikawa, 11. viii. 61, 1♀ (S. Azuma).

Although 60-odd specimens of *M. pyrrhostictum* collected at various localities from Japan to Formosa in my collection, only a pair of this species, first recorded here from Japan, are known to me.

7. *Macroglossum corythus platyxanthum* Rothschild & Jordan オキナワクロホウジャク

OKINAWA: Izumi, 20. x. 63, 1♀ (Y. Hirashima). ISHIGAKI IS.: Arakawa, 5. iii. 64, 1♂ (Y. Miyatake). YONAGUNI IS.: Sonai, 1. viii. 62, 1♀ (M. Sato & Y. Arita).

8. *Macroglossum passalus passalus* Boisduval オキナワホウジャク

ISHIGAKI IS.: Omoto-dake, 10. x. 63, 1♀ (Y. Hirashima). IRIOMOTE IS.: Shirahama, 6. iv. 62, 1♀; Inaba, 20. v. 63, 1♂ (Y. Arita).

9. *Macroglossum fritzei* Rothschild & Jordan フリッツエホウジャク

ISHIGAKI IS.: Banna, 8. v. 63, 1♂ (Y. Arita).

10. *Theretra japonica* de l'Orza コスズメ

OKINAWA: Yona, 21. iv. 62, 5♂, 1♀; 24. v. 63, 1♂ (Y. Arita). MIYAKO IS.: 1. v. 63, 1♂ (Y. Arita). ISHIGAKI IS.: Kaara-yama, 14. iii. 64, 1♂ (Y. Miyatake).

Family NOLIDAE コブガ科

11. *Celama taeniata* Snellen クロスジシロコブガ

ISHIGAKI IS.: Barubido, 18-19. xi. 63, 1♂ (H. Inoue). IRIOMOTE IS.: Shirahama, 14. xi. 63, 2♂ (H. Inoue).

Family ARCTIIDAE ヒトリガ科

The five species of this family recently recorded by me (1965, Kontyû, 33 (2): 73-84) are excluded.

12. *Parasiccia karenkonis* Matsumura カレンコウアトジロコケガ

OKINAWA: Yona, 1-2. iv. 64, 1♂ (Y. Nagano).

New to the fauna of Japan. Decidedly smaller than the Formosan specimens before me, 2♂, 2♀, otherwise quite identical with them. The systematic position of this species should be worked out in future.

13. *Chionaema hamata hamata* Walker アカスジシロコケガ
IRIOMOTE IS.: Shirahama, 14. xi. 63, 3♂ (H. Inoue).
14. *Chionaema unipunctata* Elwes ヒトテンアカスジコケガ
OKINAWA: Yona, 26. xi. 63, 1♀ (H. Inoue); Izumi-Gogayama, 22. iii. 64, 1♂ (T. Shirôzu).
15. *Miltochrista convexa* Wileman アミメベニコケガ
OKINAWA: Yona, 1. iv. 64, 1♂ (T. Kishida); ditto, 24. iv. 65, 1♀ (S. Azuma).
IRIOMOTE IS.: Mt. Ushiku, 3-7. xi. 63, 1♀ (G. A. Samuelson).
Unrecorded from Japan. As Wileman suggests (1910, Entom. 43: 223), *M. connexa* Wileman is probably synonymous with this species. These two species were described from Formosa simultaneously on the same page, but *M. convexa* precedes in line.
16. *Miltochrista ziczac* Walker (subsp. ?) アマミハガタベニコケガ (新称)
AMAMI-ÔSHIMA: Yuwandake, 16-17. vii. 63, 1♂, 1♀ (H. Inoue).
Unrecorded from Japan. Smaller and with some slight differences in comparison with the typical specimen, 1♀, from Formosa in my collection; probably the Ryukyuan population requires a new subspecies name.
17. *Asura intermedia* Marumo ヤクシマコケガ
OKINAWA: Yona, 26. xi. 63, 1♂ (H. Inoue).
18. *Asura dharma* Moore ヒメホシキコケガ
IRIOMOTE IS.: Shirahama, 5-6. xi. 63, 1♂ (G. A. Samuelson); ditto, 14. xi. 63, 1♀ (H. Inoue).
19. *Cretonotos gangis* Linné クロスジヒトリ
YONAGUNI IS.: Sonai, 11. v. 63, 1♀ (Y. Arita).
20. *Nyctemera adversata* Schaller モンシロモドキ
OKINAWA: Nago, 22. iii. 64, 1♀ (T. Shirôzu). ISHIGAKI IS.: Omoto-dake, 17. xi. 63, 1♀; Ura-omoto, 20. xi. 63, 1♀ (H. Inoue); Tôro-gawa, 11. iii. 64, 1♀ (Y. Miyatake). IRIOMOTE IS.: Ushiku-mori, 9. iii. 64, 1♂ (Y. Miyatake).
21. *Nyctemera cenis* Cramer キハラモンシロモドキ
IRIOMOTE IS.: Ushiku-mori, 11. iii. 64, 1♀ (T. Shirôzu).
22. *Nyctemera brylancik* Bryk シロハラモンシロモドキ
ISHIGAKI IS.: Yonehara, 15. iii. 64, 1♀ (Y. Miyatake).

Family AGANAIDAE ヒトリモドキガ科

23. *Asota heliconia riukuana* Rothschild シロスジヒトリモドキ
OKINAWA: Yona, 26. xi. 63, 1♀ (H. Inoue). IRIOMOTE IS.: Mt. Ushiku, 3-7. xi. 63, 2♀ (G. A. Samuelson); Shirahama, 14. xi. 63, 2♀; Ôhara, 15. xi. 1♀ (H. Inoue); Sonai, 6. x. 63, 1♀ (K. Morimoto).
24. *Asota egens confinis* Rothschild キイロヒトリモドキ
OKINAWA: Nago, 22. iii. 64, 1♂ (T. Shirôzu). IRIOMOTE IS.: Shirahama, 13. xi. 63, 1♀ (H. Inoue).

25. *Asota plana lacteata* Butler ホシヒトリモドキ
OKINAWA: Kudeken, 20. iii. 64, 1♀ (T. Shirōzu).
26. *Asota caricae* Fabricius キシタヒトリモドキ
ISHIGAKI IS.: Kaara-yama, 14. iii. 64, 1♀ (Y. Miyatake).

Family AMATIDAE カノコガ科

27. *Amata flava aritai* subsp. nov. ツマキカノコ (新称)

Forewing with subbasal orange patch behind cell larger and that in cell shorter than in the nominate subspecies from Formosa. Length of forewing: 13–16 mm.

Holotype (♂): Urabe-dake, Yonaguni Is., 12. v. 63 (Y. Arita). Paratypes: Tabaru-gawa, Yonaguni Is., 10–13. v. 63, 8♂ (Y. Arita). The holotype and three paratypes in coll. Ehime University, four paratypes in coll. Inoue, and one paratype in coll. British Museum (Nat. Hist.).

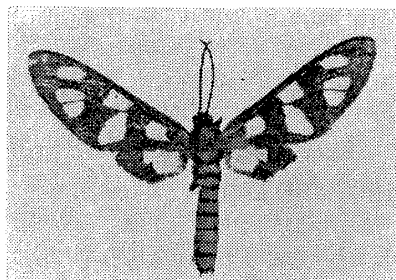


Fig. 1. *Amata flava aritai* subsp. nov. Holotype, ♂.

28. *Amata germana mandarinia* Butler キハダカノコ
IRIOMOTE IS.: Hoshidate, 8. xi. 63, 2♀ (G. A. Samuelson).

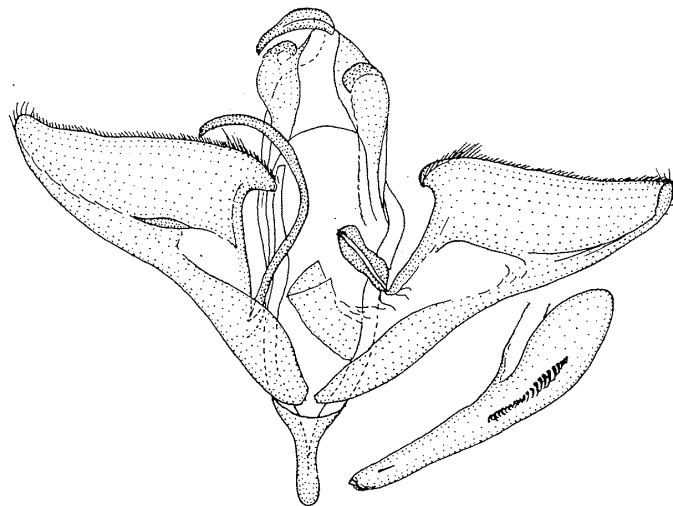


Fig. 2. *Amata flava aritai* subsp. nov. ♂ genitalia.

Family LYMANTRIIDAE ドクガ科

29. *Orgyia postica* Walker コシロモンドクガ
OKINAWA: Waku-gawa, 22. iii. 64, 1♂ (T. Shirōzu). ISHIGAKI IS.: Takeda, 20. iii. 62, 1♂; 3. v. 63, 1♂; Ishigaki City, 1. v. 62, 1♂ (Y. Arita). IRIOMOTE IS.: Sonai, 21. v. 63, 1♂ (Y. Arita); Shirahama, 8. iii. 63, 1♂ (Y. Miyatake).

30. *Orgyia triangularis* Nomura ヤクシマドクガ

OKINAWA: Yona, 27 & 29. v. 62, 1♂, 1♀ (S. Asahina).

This species was recently discovered from Tokara Is. (Arita, 1964, Reports Sci. Res. Tokara and Amami Is., Ehime Univ. 1: 34) and from Amami-ōshima (Inoue, 1965, Kontyū, 33 (1): 138).

31. *Lymantria dispar albescens* Matsumura マイマイガ

ISHIGAKI IS.: Barubido, 6 & 7. vi. 62, 3♂ (R. Kano).

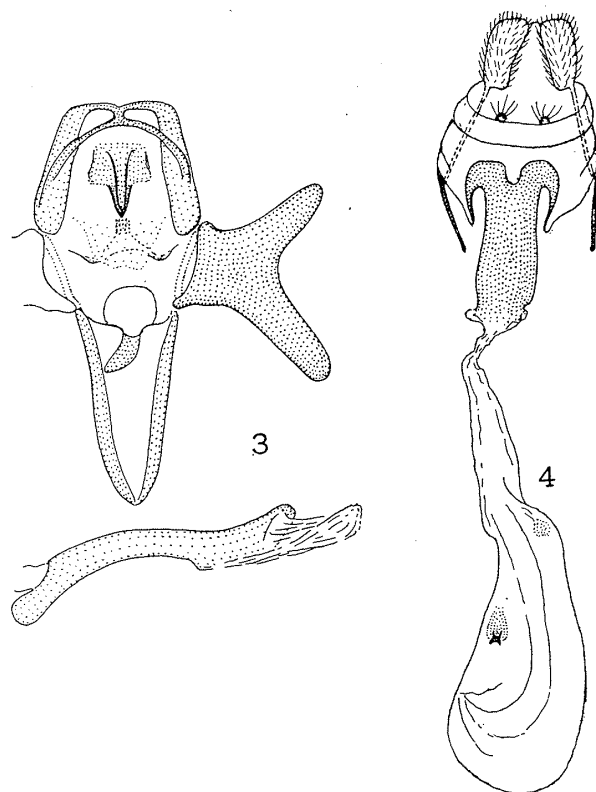
32. *Perina nuda* Fabricius スキバドクガ

ISHIGAKI IS.: Ishigaki City, 11-12. vi. 62, 3♀ (S. Asahina & R. Kano); ditto, 4. v. 63, 1♀ (Y. Arita).

New to the fauna of Japan.

33. *Euproctis taiwana* Shiraki タイワンキドクガ

OKINAWA: Yona, 1. vi. 62, 1♂ (S. Asahina). ISHIGAKI IS.: Ishigaki City, 18. vi. 62, 1♂ (R. Kano). IRIOMOTE IS.: Sonai, 18. v. 63, 1♂ (Y. Arita).



Figs. 3-4. *Euproctis taiwana*.
3: ♂ genitalia. 4: ♀ genitalia.

This species is widely distributed throughout the Ryukyu Islands (Cf. Inoue, Kontyū, 33 (1): 138). Characterized in having two slender white lines on forewing,

though often they are inconspicuous.

34. *Euproctis pulverea* Leech ゴマフリドクガ

OKINAWA: Yona, 28. v. 62, 1♀ (R. Kano); Shuri, 4. iii. 64, 1♂, 1♀ (T. Shirōzu); Izumi-Gogayama, 22. iii. 64, 1♀ (Y. Miyatake). ISHIGAKI IS.: Takeda, 3-5. v. 63, 1♂, 1♀ (Y. Arita). IRIOMOTE IS.: Ushiku-mori, 9. iii. 64, 1♀ (Y. Miyatake). YONAGUNI IS.: Urabe-dake, 13. v. 63, 1♂ (Y. Arita).

As treated by me (1956, Check List Lep. Jap. 4: 402) *Porthesia riukiwana* Matsumura (1927, Journ. Coll. Agr. Hokkaido Univ. 19 (1): 39) from Okinawa is a junior synonym of this species, but *Euproctis okinawana* Matsumura (1921, Thous. Ins. Jap. Add. 4: 896, 897, pl. 56, f. 4) from the same island is also a synonym of it, probably corresponding to the black-marked form, *kurosawai* Inoue. For the above stated synonymy I owe Dr. T. Kumata, Hokkaido University, who gave me an advice by examining Matsumura's type specimen.

Family EPIPLEMIDAE フタオガ科

35. *Gathynia fumicosta* Warren アトキフタオ (新称)

IRIOMOTE IS.: Komi, 11. iv. 62, 1♀ (Y. Arita).

This species is unrecorded from Japan, but besides the above female, there is 1♂ collected by me at Yuwandake, Amami-ōshima, 16-17. vii. 63.

36. *Epiplema flavistriga* Warren ハガタフタオ

IRIOMOTE IS.: Mt. Ushiku, 3-7. xi. 63, 1♂ (G. A. Samuelson).

37. *Epiplema desistaria* Walker アトシロオビフタオ (新称)

OKINAWA: 1-2. iv. 64, 1♂ (T. Nagano).

New to Japan.

38. *Epiplema okinawana* Matsumura オキナワフタオ

Epiplema okinawana Matsumura, 1931, 6000 Ill. Ins. Jap.: 942, no. 1503.

Since the original description is in Japanese, no symbols that denote it to be a new species being given, here will be translated it:

"Body and wings ashy white, markings dark. Forewing scattered with minute dots at costal margin, among which two are large, median and postmedian lines white, discocellular dot black, there is a black mark at the base of cellule 6, an ashy yellow mark at the outside of it, the mark distal to cell dark, a row of black marks at submarginal area, among which those in cellules 3, 4, 5 and 6 conspicuous. Hindwing with white anterior half, postmedian line black, its outer edge greyish yellow, there is a greyish yellow area at hind margin, a black spot at the end of cellule 2. Expanse 21.45 mm. This species is distributed in Okinawa, but rare."

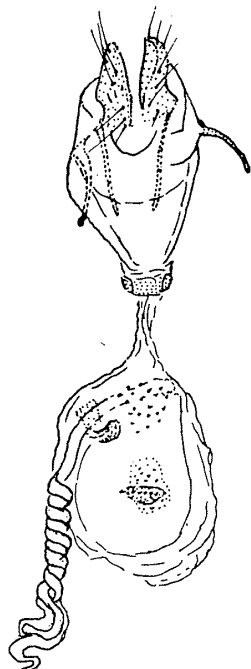


Fig. 5. *Epiplema okinawana* Matsumura ♀ genitalia.

ISHIGAKI IS.: Mt. Banna, 27-31. x. 63, 2♀ (Y. Hirashima).

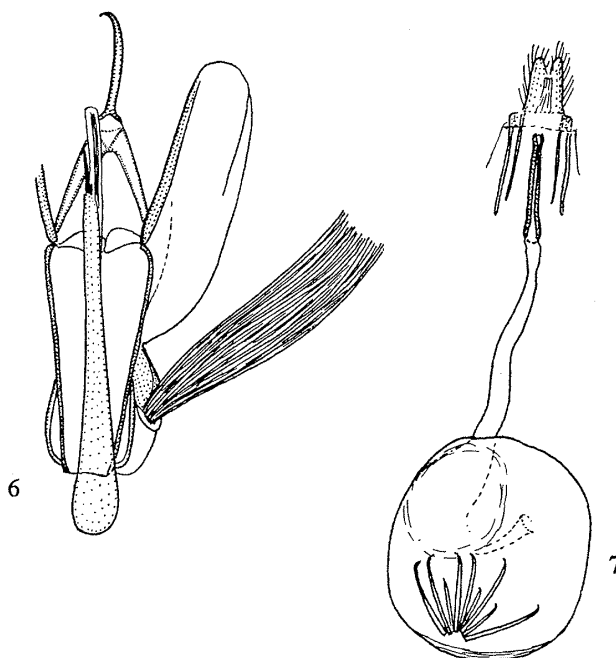
Considering from the above recorded two females, the ground colour of this species is variable, from grey-brown to white. Anterior half of terminal area of forewing is fuscous, edged proximally with blackish fascia. To supplement the external descriptions given above, here will be illustrated the female genitalia.

39. *Dirades kosemponicola* Strand アマミマルバネフタオ

Dirades kosemponicola Strand, 1916, Arch. Naturg. 82 A (1): 138 (♀).

Dirades alikangensis Strand, 1916, Arch. Naturg. 82 A (1): 139 (♂). **Syn. nov.**

Balantiucha mutans minuscula Kawazoe & Ogata, 1963, Trans. Lep. Soc. Jap. 13 (1) (1962): 20, figs. 14, 15, 28, 29 (♂, ♀). **Syn. nov.**



Figs. 6-7. *Dirades kosemponicola* Strand.
6: ♂ genitalia. 7: ♀ genitalia.

With the courtesy of Deutsches Entomologisches Institut, Berlin, I have been given a chance to examine the type specimens of *D. kosemponicola* and *D. alikangensis*, both from Formosa, and after a close examination of them by comparing with a long series of specimens before me, I am now confident of that they are female and male of the same species. Moreover, *B. mutans minuscula* from Amami-ôshima is doubtlessly a junior synonym of the same species. It is incomprehensible why Kawazoe & Ogata placed this Epiplemid in the genus *Balantiucha* Turner, which is characterized in having the unipectinated antennae, while in *Dirades* they are merely thickened and flattened.

FORMOSA: Kosempo, x. 1911, 1♀ (Holotype of *D. kosemponicola*) (H. Sauter); Alikang, x. 1909, 1♂ (Holotype of *D. alikangensis*) (H. Sauter); Yangmingshan,

Taipei, 5. vii. 64, 2♂, 1♀; Sun-Moon Lake (727 m), Nan Tow, 14. vii. 64, 2♂, 2♀; Wushe (1100 m), Nan Tow, 15. vii. 64, 1♂, 1♀ (H. Inoue). YONAGUNI IS.: Urabe-dake, 2. viii. 62, 1♂ (M. Sato & Y. Arita). IRIOMOTE IS.: Mt. Ushiku, 3-10. xi. 63, 5♂, 4♀ (G. A. Samuelson); Upper Nakara River, 12. iii. 64, 1♂, 1♀ (T. Shirôzu). ISHIGAKI IS.: 24. ii. 62, 1♀, reared from a larva on *Wendlandia formosana* Cowan, Rubiaceae (S. Azuma); Barubido, 18-19. xi. 63, 4♂, 11♀ (H. Inoue). OKINAWA: Yona, 26. xi. 63, 1♀ (H. Inoue). TOKUNOSHIMA: Mikyô, 24-25. vii. 63, 2♂, 2♀ (H. Inoue). AMAMI-ÔSHIMA: Naze, 5. viii. 61, 1♂, 1♀; Yuwandake, 7. viii. 61, 2♂; Yuwan, 14. viii. 61, 1♂ (A. Kawazoe); Yuwandake, 16-17. vii. 63, 1♀; Nishinakama, 19-20. vii. 63, 3♀ (H. Inoue).

40. *Phazaca prunaria* Moore マルバネフタオ

ISHIGAKI IS.: Takeda, 22. iii. 62, 1♂ (Y. Arita); Omotodake, 28 & 30. iii. 64, 3♀ (I. Kishida & T. Nagano). IRIOMOTE IS.: Mt. Ushiku, 3-7. xi. 63, 1♂, 1♀ (G. A. Samuelson).

41. *Metorthochilus emarginatum* Hampson エグリフタオ

OKINAWA: Yona, 1. iv. 64, 2♂ (I. Kishida).

Family DREPANIDAE カギバガ科

42. *Psiloreta loochooana* Swinhoe オキナワカギバ

OKINAWA: Yona, 21. iv. 62, 1♂ (Y. Arita); ditto, 27. xi. 63, 1♂ (H. Inoue). IRIOMOTE IS.: Sonai, 22. v. 63, 1 ex. (Y. Arita).

Family HETEROGENEIDAE イラガ科

43. *Nadata arizana* Wileman クロスジイラガ

OKINAWA: Yona, 26-27. xi. 63, 2♂ (H. Inoue).

This species is new to the fauna of Japan, but in my collection there are also the following specimens from the mainland:

Usuki-cho, Kagoshima City, 8. x. 58, 1♂; 24. x. 59, 1♂; 9. xi. 60, 1♂ (Y. Take-mura); Takihara, Miye Pref., 9. x. 60, 1♂ (M. Sakabe).

44. *Hyphormoides okinawanus* Matsumura オキナワイラガ

Hyphormoides okinawana Matsumura, 1931. Ins. Mats. 5 (3): 104, pl. 2, f. 7.

OKINAWA: Yona, 21. iv. 62, 2♂ (Y. Arita).

Family ZYGAENIDAE マダラガ科

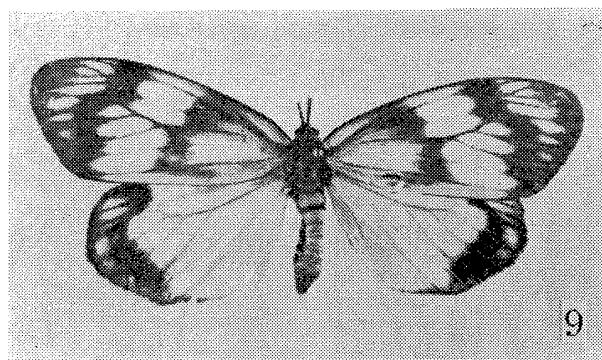
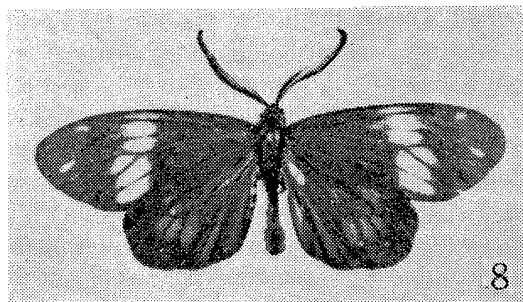
45. *Histia rhodope ultima* Hering クロツバメ

OKINAWA: Tamagusuku, 17. xi. 63, 1♀ (H. Hasegawa). ISHIGAKI IS.: Hoshino, 19. xi. 63, 1♂ (H. Inoue). IRIOMOTE IS.: Ôhara, 15. xi. 63, 1♂ (H. Inoue).

46. *Chalcosia formosana* Matsumura シロオビホタルガ

ISHIGAKI IS.: Barubido, 16. vi. 62, 1♀ (R. Kano). IRIOMOTE IS.: Shirahama, 5. xi. 63, 1♀ (H. Hasegawa).

Although Matsumura (1911, Thous. Ins. Jap. Suppl. 3: 25, pl. 32, f. 2, ♂) records



Figs. 8-9. *Chalcosia formosana* Matsumura.
8: holotype, ♂. 9: holotype, ♀, of *Ch. yayeyamana*
Matsumura.

"Kawarayama, Formosa" as its type-locality, and afterwards he records the same specimen, the type specimen, as collected at "Fuhosho", Formosa (1931, 6000 Ill. Ins. Jap.: 985), it is apparently a misunderstanding of Kaara-yama (or often spelt as "Kawarayama"), Ishigaki Is. The fact that *C. yayeyamana* Matsumura (1927, Journ. Coll. Agr. Hokkaido Univ. 19 (1): 80, pl. 3, f. 12, ♀) from Ishigaki Is. is the female of *C. formosana* was already pointed out by Horii & Nomura (1935, Kontyû, 9 (3): 133-134, figs. A (♂), B (♀)).

47. *Eterusia aedea okinawana* Matsumura オキナワルリチラシ

OKINAWA: Yona, 25 & 26. xi. 63, 2♀ (H. Inoue). ISHIGAKI IS.: Arakawa, 13. vi. 62, 1♂; Kainan, 16. vi. 62, 1♀ (R. Kano); Tôro-gawa, 17. iii. 64, 2♂ (T. Shirôzu). IRIOMOTE IS.: Shirahama, 14. xi. 63, 1♀ (H. Inoue).

48. *Erasmia pulchella fritzei* Jordan サツマニシキ

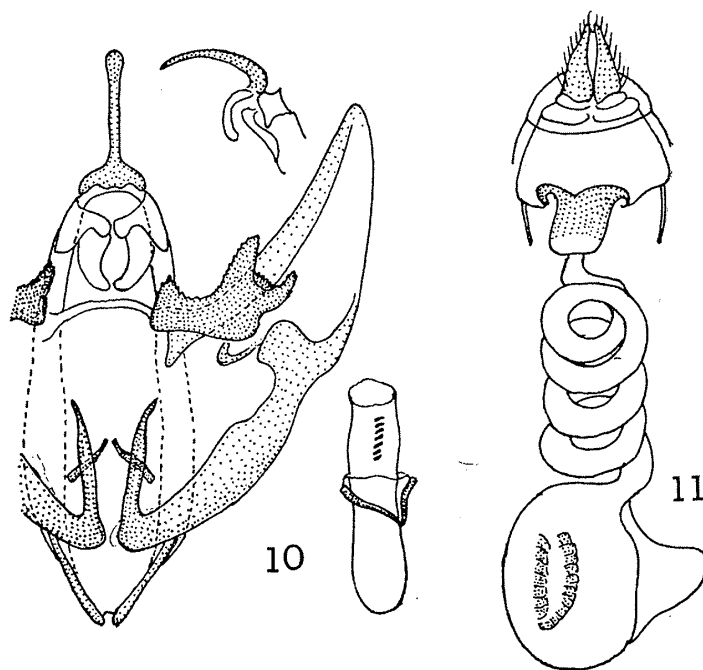
IRIOMOTE IS.: Sonai, 12. x. 63, 1♀ (S. Miyamoto).

Family THYRIDIDAE マドガ科

49. *Canaea ryukyuensis* sp. nov. ウンモンマドガ

Rhodoneura semitesselata (sic!): Kawazoe & Ogata, 1963, Trans. Lep. Soc. Jap. 13 (1) (1962): 14, figs. 1, 2. 19; Arita, 1964, Rep. Sci. Res. Tokara and Amami Is., Ehime Univ. 1: 32, pl. 16, f. 8 (non *semitessellata* Walker).

Similar to *C. semitessellata* Walker, but quite distinct from it in the arrangement of maculation; forewing with proximal half dark grey-brown or straw colour, sometimes mixed with pinkish hue (this colouration may be a character of early spring specimens), a row of hyaline spots from origin of veins 5 and 4 to submedian fold, usually there are four spots, but often that in cellule 3 accompanies a smaller one, tessellated postmedian band above the hyaline spots sometimes isolated from marginal tessellation, though frequently confluent into it at veins 4 and 5, a short bar of the ground colour starting termen at vein 4 vanishes at vein 7. Hindwing with similar hyaline spots, but less developed than on forewing and usually only two spots are seen, antemedian band of the ground colour often continues apical area through center of margin, other area tessellated. Length of forewing: ♂, 14–18 mm; ♀, 17–20 mm.



Figs. 10–11. *Canaea ryukyuensis* sp. nov.
10: ♂ genitalia. 11: ♀ genitalia.

Holotype (♂): Yona, Okinawa, 30. v. 62 (S. Asahina). Paratypes:— YONAGUNI IS.: Sonai, 8. vii. 63, 1♂ (Y. Nagayoshi). ISHIGAKI IS.: Omoto-dake, 17. xi. 63, 1♂ (H. Inoue). OKINAWA: Shuri, 1. vi. 59, 1♂; 1. vi. 59, 1♂; 18. v. 60, 1♂ (S. Azuma); Yona, 29–30. v. 62, 5♂ (S. Asahina); ditto, 30. iii. & 1. iv. 64, 2♂ (I. Kishida). OKINO-ERABU IS.: 25. iv. 57, 1♂; 29–31. v. 57, 4♂ (M. Umebayashi), from Prof. T. Shirôzu. AMAMI-ÔSHIMA: Kashiken, 2. ix. 61, 1♂ (M. Sakae & T. Shimada); Naze, 23. iv. 63, 4♀ (M. Sakae). KIKAI-GASHIMA: 23. vii. 54, 1♂ (R. Kawasaki).

The holotype and most of the paratypes are in coll. Inoue, but some paratypes will be preserved in the following public and private collections: Bishop Museum, Honolulu; British Museum (Nat. Hist.); Ehime University; Kyushu University; Dr.

S. Asahina.

The genus *Canaea* Walker, type species *C. semitessellata* Walker, 1864, J. Linn. Soc. Lond. 7 : 73, from Sarawak, was recently removed from synonymy by Whalley, 1964, Ann. Mag. Nat. Hist. (13) 7 : 118.

50. *Striglina scitaria* Walker アカジマモドガ

ISHIGAKI IS.: Banna, 27-31. xi. 63, 1♂, 1♀ (G. A. Samuelson).

Explanation of Plate 12

- Fig. 1. *Parasiccia karenkonis* Matsumura, ♂.
 Fig. 2. *Miltochrista zigzag* Walker, ♀ (Formosa).
 Fig. 3. Ditto (subsp. ?), ♂.
 Fig. 4. Ditto (subsp. ?), ♀.
 Fig. 5. *Miltochrista convexa* Wileman, ♂.
 Fig. 6. Ditto, ♀.
 Fig. 7. *Euproctis taiwana* Shiraki, ♂.
 Fig. 8. Ditto, ♀.
 Fig. 9. *Epiplema okinawana* Matsumura, ♀.
 Fig. 10. Ditto, ♀.
 Fig. 11. *Gathynia fumicota* Warren, ♀.
 Fig. 12. *Hyphormoides okinawanus* Matsumura, ♂.
 Fig. 13. *Dirades kosemponicola* Strand, ♂ (Holotype of *D. alikangensis* Strand).
 Fig. 14. Ditto, ♀, holotype.
 Fig. 15. Ditto, ♂.
 Fig. 16. Ditto, ♀.
 Fig. 17. *Epiplema desistaria* Walker, ♂.
 Fig. 18. *Canaea ryukyuensis* sp. nov., ♂, holotype.

摘 要

本文では、日米科学協力研究の一部として、1963年秋と1964年春に行なわれた琉球列島の昆虫採集に参加された方々の採集品と、私に個人的に研究をゆだねられた材料などをもととして、ヤガ科、シャクガ科、小蛾類を除く約50種のリストを発表した。琉球の蛾類の調査は、内地とは比較にならないほどおこなわれているので、ごく普通の種も分布資料として詳しいデータを記録した。

現地での採集調査のために多大の便宜を計つていただいた琉球大学の高良鉄夫博士に対し、この機会を利用して、深謝の意を表す。

6. チビホウジャク インド・マレー地区から南シナに広く分布しているが、日本からは未知であつた。ホシホウジャクによく似ているが小型、♂交尾器のharpeの先端は、ホシホウジャクでは約6本の不規則にならんだ鋸歯をもつが、本種ではこまかい鋸歯が規則正しく半円形をなしている。沖縄本島。

16. アマミハガタバニコケガ シナに分布することが知られていたが、台湾にも産する。

奄美大島でとれた 1♂ 1♀は、前翅前縁部が内・外横線の間で白色とならず、連続的に紅色な点で典型的な個体とちがうので、将来亜種を分けるべきかも知れない。

27. ツマキカノコ 与名国島産を本文で台湾の *Amata flava* Wileman の亜種として記載した。楚南は「台湾産カノコガ科の研究」(1931, 台湾博物学会会報, 31: 100-101) のなかで、松村 (1931, 日本昆虫大図鑑, pp. 994, 996) の *Syntomis lucerna* Wileman ツマジロカノコと *S. flava* Wileman ツマジロカノコは、同定が逆だとして、和名を入れ替えている。私はまだ *lucerna* を知らないが、*flava* の図と記載が *lucerna* を指しているようには考えられない。何れにしても前翅裏面の翅頂には黄紋があるので、本種の和名をツマキカノコとよぶことにした。

32. スキバドクガ 日本から未記録であるが石垣島で 4♀ がとれている。♀ は一見 *Euproctis* のようであるが、♂ はこれとまったくちがって、前翅が透明で後翅が黒い。♀ と異り♂ は昼飛性だと思われる。松村 (1931, 前出, p. 721) や加藤 (1934, 原色日本昆虫図鑑, 12, pl. 17, f. 1-3) の図を参照されたい。

33. タイワンキドクガ 私 (1965, 昆虫, 33 (1): 138) が既に述べたように本種は奄美群島に分布し、更に南は台湾までの各島でごく普通のようなものである。ゴマフリドクガの斑紋のうすい個体と間違えやすいが、前翅は一樣に淡い黄色で、橙色や黒つばい鱗粉をまぜない。白色の細い横線が 2 本かすかに見える (♀ では一般に更に弱いか完全に消失)。

35. アトキフタオ 奄美大島・西表島。

37. アトシロオビフタオ 沖縄。以上 2 種は日本未記録であつた。特徴がはつきりしているので写真で十分同定できると思う。

38. オキナワフタオ 沖縄の♀ によつて発表されたものであるが、今回石垣島から 2♀ がとれた。

39. アマミマルバネフタオ 台湾から発表された *Dirades kosemponicola* Strand (♀), *D. alikangensis* Strand (♂), 奄美大島から記載された *Balantiucha mutans minuscula* Kawazoe & Ogata がすべて同一種であることがわかつた。琉球から台湾までの各島でごく普通。東清二氏は石垣島でアカミズキに寄生した幼虫から 1♀ を得ている。

42. クロスジイラガ 台湾のみから知られていたが、沖縄・鹿児島及び三重県でとれた。秋に発生する。

46. シロオビホタルガ *Chalcusia formosana* Matsumura が♂, *Ch. yayeyamana* Mats. が同一種のものであることは、堀・野村 (1935, 昆虫, 9 (3): 133-134) が指摘した通りであるが、*Ch. formosana* のタイプ産地は、原記載にあるように台湾ではなく、石垣島のカーラ山 (カワラ山とも発音される) の間違いである。日本昆虫大図鑑, p. 985 で台湾のフウホシヨウ [台中州茅埔庄] となつているのは、明らかに誤り。従つて、ここに写真を示したタイプは♂♀とも石垣島産である。

49. ウンモンマドガ 川副・緒方 (1963, 蝶と蛾, 13 (1): 14) によつて "*Rhodoneura semitesselata* Walker" として奄美大島から記録され、表記の和名が与えられたが、ボルネオから記載された *Canaea semitesselata* Walker とは別種である。トカラ諸島から与名国島

1965

KONTYŪ

363

までの各島に分布している。

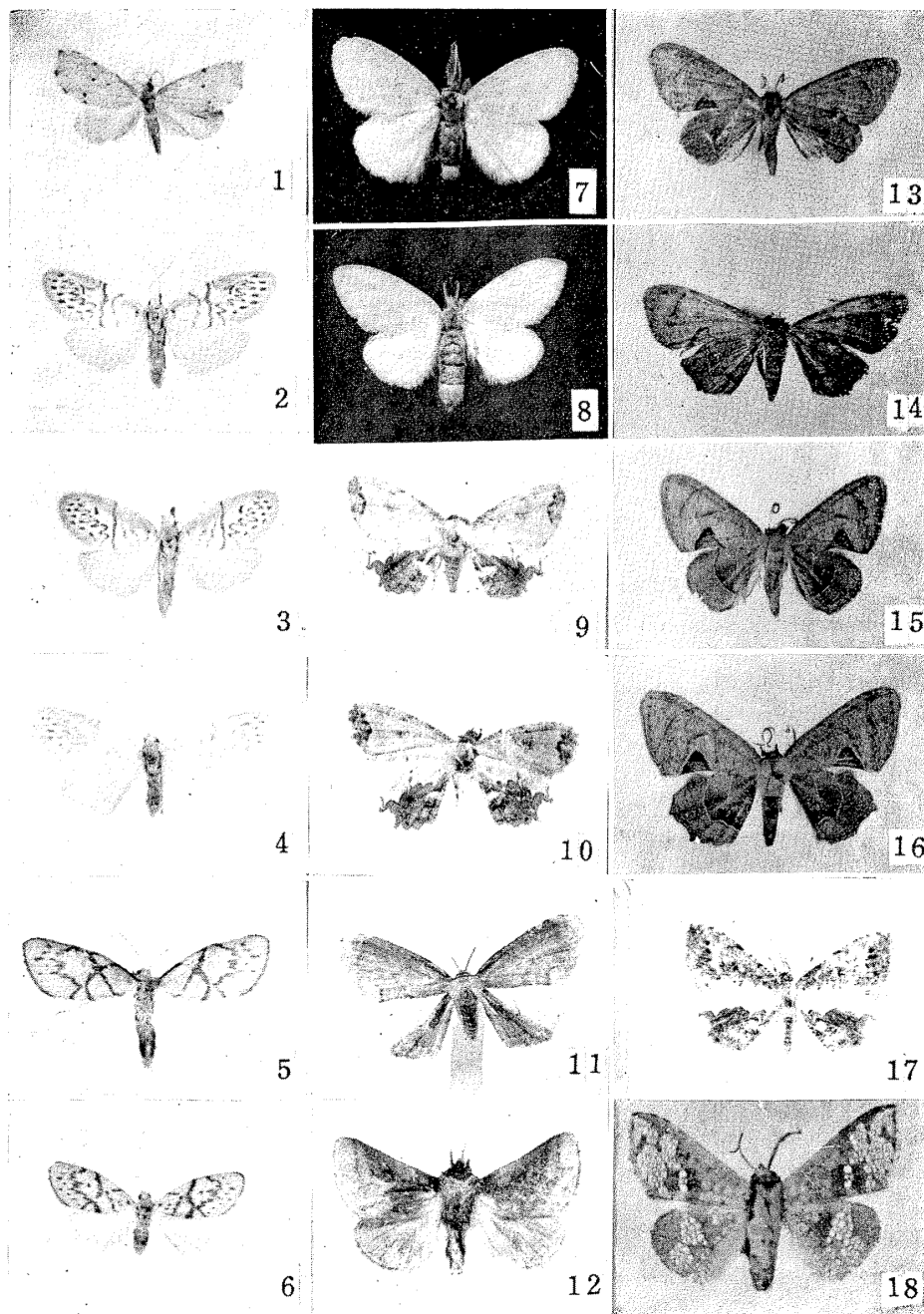
写真撮影の労をとられた川辺湛・前波鉄也両氏に御礼申し上げる。

Corrections to H. Inoue's papers in Kontyû, vols. 32 & 33.

32 (4), p. 536, line 3: *insulata* Inoue, read *insulata* Warren: Inoue.

33 (1), p. 132, line 8: *hyalis hyalis*, read *hylas hylas*.

p. 139, lines 7 & 9 from bottom: Rothschild & Jordan read Rothschild.



Inoue—Moths from the Ryukyu Islands.