

PLATE 2

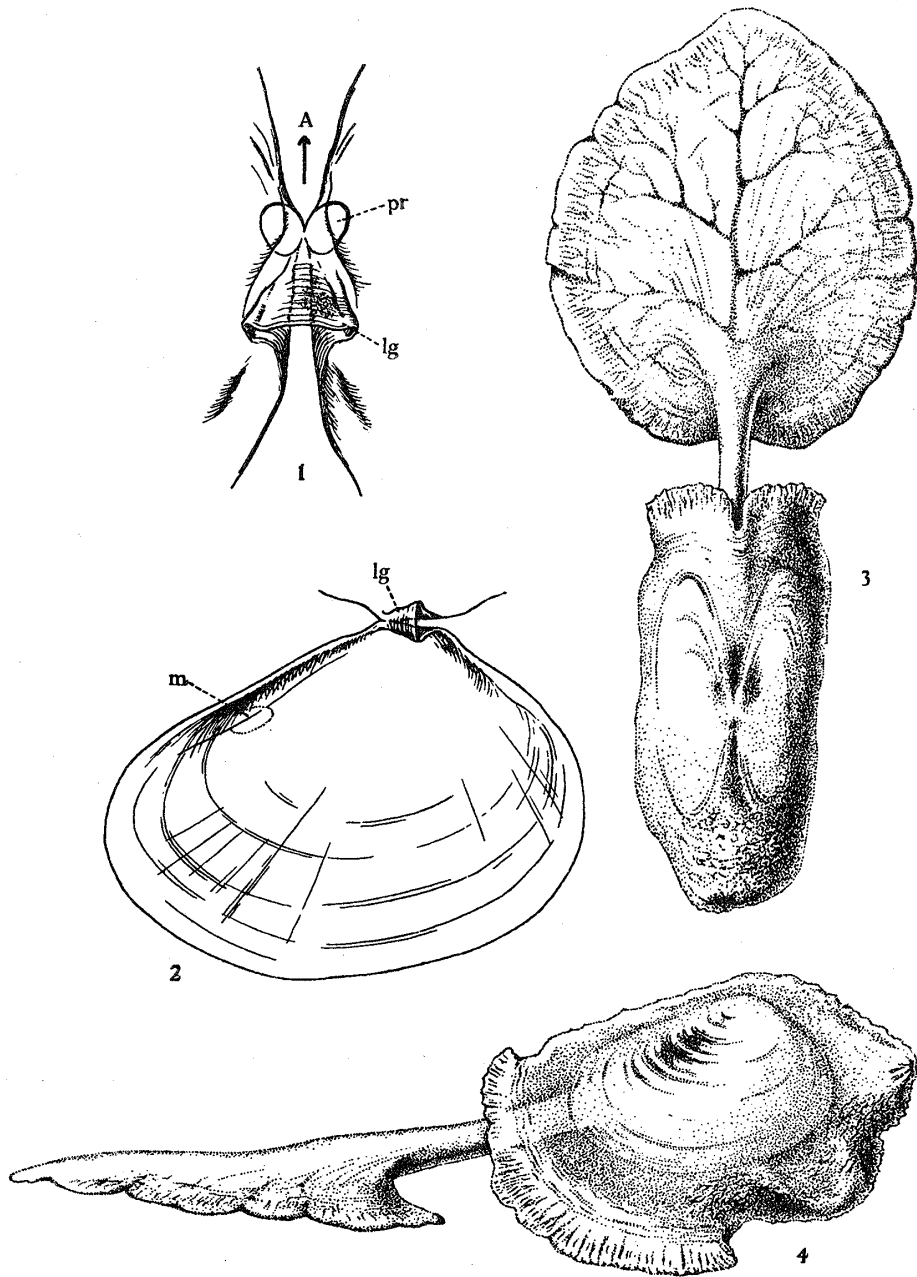
EXPLANATION OF FIGURES

- Fig. 1. The hinge of the valves seen from inside. $\times 20$. *A* anterior; *lg* ligament; *pr* prodissoconch.
- Fig. 2. The right valve seen from inside. $\times 8$. *lg* ligament; *m* impression of the anterior adductor.
- Fig. 3. Dorsal view of the whole animal fully extended. $\times 5$.
- Fig. 4. Do: seen from left side. $\times 5$.

ENTOVALVA SEMPERI SP. NOV.

H. OHSHIMA

PLATE 2



H. OHSHIMA DEL.