

*Jpn. J. Ent.*, 57(2): 319-332. June 25, 1989

# Chrysomelid Beetles of Nepal, Northeastern India and Western Sikkim Collected by the Himalaya Expeditions of the National Science Museum, Tokyo

(Part 1)

HARUO TAKIZAWA

Biological Research Center, Japan Tobacco Inc., Hatano,  
Kanagawa, 257 Japan

**Abstract** Chrysomelid beetles of Nepal, Northeastern India and Western Sikkim collected by the Himalaya Expeditions of the National Science Museum, Tokyo, 1981 and 1983, were examined. Eighty-six species including 4 new species, *Lilioceris nepalensis*, *Oomorphoides sakaii*, *Chrysonopa apicalis* and *Leptispa bengalensis* n. spp., are enumerated.

This is a result of my study on chrysomelid beetles of Nepal, Northeastern India and Western Sikkim, which were collected by the National Science Museum Expeditions to Nepal 1981, and to Western Sikkim 1983. This part deals with subfamilies Sagrinae, Zeugophorinae, Criocerinae, Clytrinae, Cryptocephalinae, Chlamisinae, Lamprosomatinae, Eumolpinae, Chrysomelinae, Cassidinae and Hispinae. A total of 86 species were enumerated, including 4 new species: *Lilioceris nepalensis*, *Oomorphoides sakaii*, *Chrysonopa apicalis* and *Leptispa bengalensis* n. spp.

A part of this material was already mentioned in my previous papers, in which case details of the examined specimens are not presented. All the specimens including the holotypes are deposited in the collection of the National Science Museum (Nat. Hist.), Tokyo, except for some duplicates kept by the author.

I am much indebted to Mr. M. TOMOKUNI of the National Science Museum, Tokyo, for giving me opportunity to work with this interesting material, and to the members of the Expeditions for their endeavour in collecting material. Further I wish to express my hearty thanks to Dr. S. KIMOTO of Kurume University, Kurume, for his continuous help.

## Enumeration

### Subfamily Sagrinae

1. *Sagra carbunculus* HOPE, 1842  
C. Nepal — 1 ex., Godavari\* nr. Kathmandu, 16. IX. 1981, M. SAKAI (MS)  
leg.

## Subfamily Zeugophorinae

2. *Zeugophora longicornis* (WESTWOOD, 1864)  
NE. India — 1 ex., Bagora nr. Kurseong, W. Bengal, 9. VI. 1981, MS.
3. *Zeugophora pallidicincta* GRESSITT, 1945 (Fig. 5)  
NE. India — 2 exs., Darjeeling, W. Bengal, 28. IX. 1983, MS.
4. *Zeugophora yunnanica* CHEN et PU, 1962  
C. Nepal — 1 ex., Siwapuri Dara, 8. X. 1981, M. TOMOKUNI (MT) leg.  
*Distribution.* Nepal\*\*, Assam, China.

## Subfamily Criocerinae

5. *Liliocerus impressa* (FABRICIUS, 1787)  
C. Nepal — 1 ex., Phewa Lake, Pokhara, 25. X. 1981, MS; 1 ex., Biletanti - Hille nr. Ghorapani, 14. X. 1981, MS.
6. *Liliocerus nepalensis* n. sp.  
*Distribution.* NE. India, Nepal.
7. *Lema cyanea* FABRICIUS, 1798  
C. Nepal — 8 exs., Kakani nr. Kathmandu, 15. IX. 1981, MS; 1 ex., Ghandrung nr. Pokhara, 22. X. 1981, MS; 1 ex., Kiumrung nr. Ghandrung, 17. X. 1981, MS.
8. *Lema rufotestacea* CLARK, 1866  
NE. India — 1 ex., Bachabai nr. Darjeeling, W. Bengal, 29. IX. 1983, MS; 1 ex., Badamtam nr. Darjeeling, W. Bengal, 29. IX. 1983, MT.
9. *Lema* sp.  
NE. India — 1 ex., Badamtam nr. Darjeeling, W. Bengal, 29. IX. 1983, MT.

## Subfamily Clytrinae

10. *Diapromorpha dejeani* (LACORDAIRE, 1848)  
C. Nepal — 1 ex., Kakani nr. Kathmandu, 15. IX. 1981, MS. W. Sikkim — 1 ex., Yuksam, 26. IX. 1983, MT.
11. *Clytra indica* JACOBY, 1889  
NE. India — 1 ex., Manjitar nr. Darjeeling, W. Bengal, 29. IX. 1983, MT.
12. *Smaragdina higuchii* KIMOTO et TAKIZAWA, 1981 (Fig. 1 b)  
C. Nepal — 2 exs., Kakani nr. Kathmandu, 15. IX. 1981, MS.
13. *Smaragdina minuta* JACOBY, 1908 (Fig. 1 a)  
NE. India — 2 exs., Manjitar nr. Darjeeling, W. Bengal, 29. IX. 1983, MS.

## Subfamily Cryptocephalinae

14. *Adiscus castaneus* (JACOBY, 1892) (Fig. 1 d)  
W. Sikkim — 1 ex., Yuksam, 26. IX. 1983, MT.  
*Distribution.* Sikkim\*, Burma.

\* Altitude of collecting localities are given in appendix.

\*\* Asterisk indicates new record from the area.

15. *Adiscus nigroplagiatus* (JACOBY, 1903) (Fig. 1 c)  
C. Nepal — 14 exs., Kakani nr. Kathmandu, 15, 17. IX. 1981, MS; 1 ex., Ulleri nr. Ghorapani, 14. X. 1981, MS. W. Sikkim — 1 ex., Yuksam, 26. IX. 1983, MT; 1 ex., Yuksam - Zomphuk, 11. IX. 1983, MT.
16. *Adiscus* sp.  
= *Adiscus* sp.: TAKIZAWA, 1988.  
C. Nepal — 1 ex., Rani-Ban, Royal Forest, Kathmandu, 5. X. 1981, MS; 1 ex., Banjgara, Parbat Dist., 14. X. 1981, MT.
17. *Coenobius laevicollis* (JACOBY, 1899)  
W. Sikkim — 1 ex., Yuksam - Zomphuk, 11. IX. 1983, MT.  
*Distribution.* Sikkim\*, Nepal, Tenassarium, Sumatra.
18. *Coenobius* sp. 1  
NE. India — 1 ex., Manjitar nr. Darjeeling, W. Bengal, 29. IX. 1983, MS.
19. *Coenobius* sp. 2  
C. Nepal — 1 ex., Ulleri nr. Ghorapani, 14. X. 1981, MS.
20. *Coenobius* sp. 3  
W. Sikkim — 1 ex., Yuksam, 11. IX. 1983, MS.
21. *Cryptocephalus baroniurbanii* LOPATIN, 1982  
C. Nepal — 1 ex., Godavari nr. Kathmandu, 16. IX. 1981, MT.
22. *Cryptocephalus notogrammus* SUFFRIAN, 1854  
W. Nepal — 1 ex., Jumla — Ghughuti, 21. IX. 1981, MS; 1 ex., Damphe Lekh by Ghughuti, Jumla Dist., 22. IX. 1981, MT.
23. *Cryptocephalus poultoni* JACOBY, 1908 (Fig. 1 e)  
C. Nepal — 11 exs., Kakani nr. Kathmandu, 9, 15, 17. IX. 1981, MS & S. AÆ leg.; 1 ex., Sundarijal nr. Kathmandu, 8. X. 1981, MS; 2 exs., Chhomrong - Kiumrung, Parbat Dist., 14, 22. X. 1981, MT.
24. *Cryptocephalus* sp. 1  
NE. India — 1 ex., Darjeeling, W. Bengal, 8. IX. 1983, MT.
25. *Cryptocephalus* sp. 2  
W. Nepal — 1 ex., Jumla, Jumla Dist., 21. IX. 1981, MT.

## Subfamily Chlamisinae

26. *Chlamisus* sp.  
C. Nepal — 1 ex., Kakani nr. Kathmandu, 15. IX. 1981, MS.

## Subfamily Lamprosomatinae

27. *Oomorhoides chujoi* TAKIZAWA, 1987  
C. Nepal — 1 ex., Nayathanti - Ghorapani, Parbat Dist., 15. X. 1981, MT.
28. *Oomorhoides nepalensis* TAKIZAWA, 1987  
*Distribution.* Nepal, NE. India.
29. *Oomorhoides sakaii* n. sp.  
*Distribution.* NE. India, W. Sikkim.

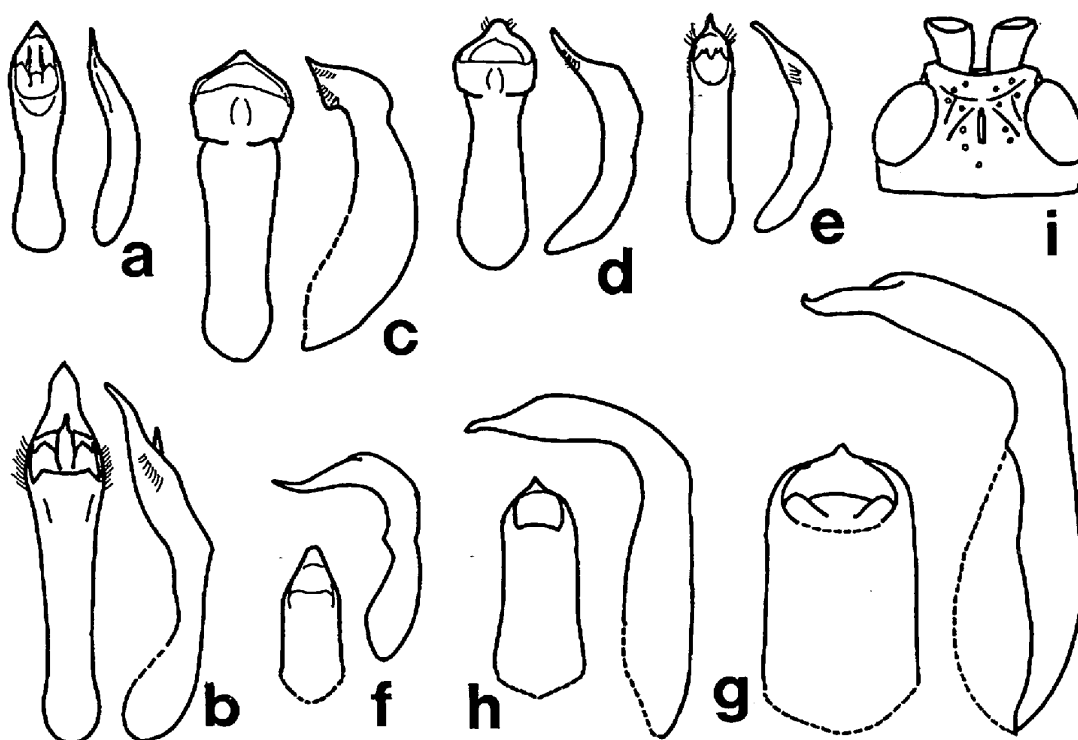


Fig. 1. Aedeagus (a-h) and head (i). — a, *Smaragdina minuta* JACOBY (from Manjitar); b, *S. higuchii* KIMOTO et TAKIZAWA (from Kakani); c, *Adiscus nigroplagiata* (JACOBY) (from Kakani); d, *A. castaneus* (JACOBY) (from Yuksam); e, *Cryptocephalus poultoni* JACOBY (from Kakani); f, *Basilepta obscurum* (JACOBY) (from Manjitar); g, *B. sikkimense* (JACOBY) (from Yuksam); h, *Chrysonopa apicalis* n. sp. (from Choka); i, *Leptispa bengalensis* n. sp. (holotype).

#### Subfamily Eumolpinae

30. *Basilepta abdominale* (BALY, 1908)  
C. Nepal — 2 exs., Birethanti, Kaski Dist., 13. X. 1981, MT.
31. *Basilepta kumatai* KIMOTO et TAKIZAWA, 1973  
C. Nepal — 1 ex., Sundarijal nr. Kathmandu, 8. X. 1981, MS; 1 ex., Sundarijal - Okhreni nr. Kathmandu, 6. X. 1981, MS.
32. *Basilepta obscurum* (JACOBY, 1908) (Fig. 1 f)  
NE. India — 78 exs., Manjitar, Darjeeling, W. Bengal, 29. IX, 9. X. 1983, MS; 1 ex., Bachabai nr. Darjeeling, W. Bengal, 29. IX. 1983, MT. W. Sikkim — 1 ex., Yuksam, 26. IX. 1983, MS; 1 ex., Yuksam - Zomphuk, 11. IX. 1983, MT.  
*Distribution.* Nepal, Sikkim\*, Assam, India.
33. *Basilepta sakaii* TAKIZAWA, 1987  
*Distribution.* Nepal.
34. *Basilepta sikkimense* (JACOBY, 1900) (Fig. 1 g)  
W. Sikkim — 2 exs., Yuksam, 10. IX. 1983, MS.
35. *Basilepta quadrifasciatum* (JACOBY, 1908)

- C. Nepal — 2 exs., Birethanti – Hille nr. Ghorapani, 13, 14. X. 1981, MS.
36. *Basilepta* sp. 1  
NE. India — 1 ex., Manibhanjang, Singalila Dara, Darjeeling, W. Bengal, 7. X. 1983, MT.
37. *Basilepta* sp. 2  
NE. India — 1 ex., Bagora nr. Darjeeling, W. Bengal, 9. XI. 1981, MT.
38. *Nodina nepalensis* TAKIZAWA, 1987  
NE. India — 1 ex., Darjeeling, W. Bengal, 27. IX. 1983, MS.  
*Distribution.* Nepal, India\*.
39. *Nodina parvula* JACOBY, 1892  
C. Nepal — 8 exs., Kakani nr. Kathmandu, 17. IX. 1981, MS. W. Sikkim — 1 ex., Yuksam – Zomphuk, 11. IX. 1983, MT.
40. *Nodina* sp.  
C. Nepal — 1 ex., Kiumrung – Chhomrong, Parbat Dist., 18. X. 1981, MT.
41. *Pseudostonopa bicolor* JACOBY, 1903  
C. Nepal — 1 ex., Rani-Ban, Royal Forest, Kathmandu, 5. X. 1981, MS.
42. *Chrysonopa apicalis* n. sp.  
*Distribution.* W. Sikkim, NE. India
43. *Pagria signata* (MOTSCHULSKY, 1858)  
NE. India — 46 exs., Manjitar, Darjeeling Dist., W. Bengal, 29. IX, 9. X. 1983, 8. XI. 1981, MS & MT. C. Nepal — 1 ex., Damphus Dara nr. Pokhara, 23, 24. X. 1981, MS; 1 ex., Rani-Ban, Royal Forest, Kathmandu, 5. X. 1981, MS; 1 ex., Godavari, Kathmandu, 16. X. 1981, MT; 4 exs., Sundarikal – Mulkharka, Kathmandu, 8. X. 1981, MT; 1 ex., Ulleri nr. Ghorapani, 14. X. 1981, MS. W. Nepal — 1 ex., Bhulbhule, betw. Jumla & Rara Lake, 23. IX. 1981, MS.
44. *Cleorina bevani* (BALY, 1877)  
W. Sikkim — 3 exs., Yuksam, 26. IX. 1983, MS & MT.
45. *Platycorynus mouhoti* BALY, 1864.  
NE. India — 1 ex., Badamtam nr. Darjeeling, W. Bengal, 29. IX. 1983, MS.
46. *Scelodonta indica* DUVIVIER, 1891  
NE. India — 4 exs., Manjitar nr. Darjeeling, W. Bengal, 29. IX. 1983, MS.
47. *Aoria nigriceps* (BALY, 1860)  
NE. India — 1 ex., Tista nr. Darjeeling, W. Bengal, 10. XI. 1981, MT.
48. *Pseudaoria coerulea* JACOBY, 1908  
NE. India — 3 exs., Darjeeling, W. Bengal, 27. IX. 1983, MT.
49. *Trichotheca hirta* BALY, 1860  
C. Nepal — 2 exs., Mt. Siwapuri nr. Kathmandu, 7. X. 1981, MS; 1 ex., Phedi – Dovan nr. basecamp of Mt. Machhapuchhare, 19. X. 1981, MS; 1 ex., Kiumrung – Ghandrung, 22. X. 1981, MS; 1 ex., Deorali – Kuldi, nr. basecamp of Mt. Machhapuchhare, 21. X. 1981, MS; 1 ex., Nayathanti – Ghorapani, Parbat Dist., 15. X. 1981, MT. W. Nepal — 1 ex., Chaucha – Bhulbhule nr. Jumla, Jumla Dist., 23. IX. 1981, MS. NE. India — 1 ex., Darjeeling, W. Bengal, 27.

- IX. 1983, MS; 7 exs., Gairibas, Singalila Ridge, W. Bengal, 6. X. 1983, MS. W. Sikkim — 3 exs., Bakkhim nr. Yuksam. 12. IX. 1983, MS; 1 ex., Bakkhim – Choka nr. Yuksam, 13. IX. 1983, MS.
50. *Trichotheca sikkimensis* TAKIZAWA, 1987  
Distribution. W. Sikkim, India, Nepal.
51. *Xanthonia fulva* TAKIZAWA, 1987  
Distribution. Nepal.
52. *Demotina modesta* BALY, 1874  
C. Nepal — 6 exs., Sundarijal – Okhreni nr. Kathmandu, 6. X. 1981, MS; 1 ex., Sundarijal nr. Kathmandu, 8. X. 1981, MS; 1 ex., Okhreni nr. Kathmandu, 6. X. 1981, MT; 3 exs., Rani Ban, Royal Forest, Kathmandu, 5. X. 1981, MS; 1 ex., Pokhara – Naudanda, 12. X. 1981, MS.

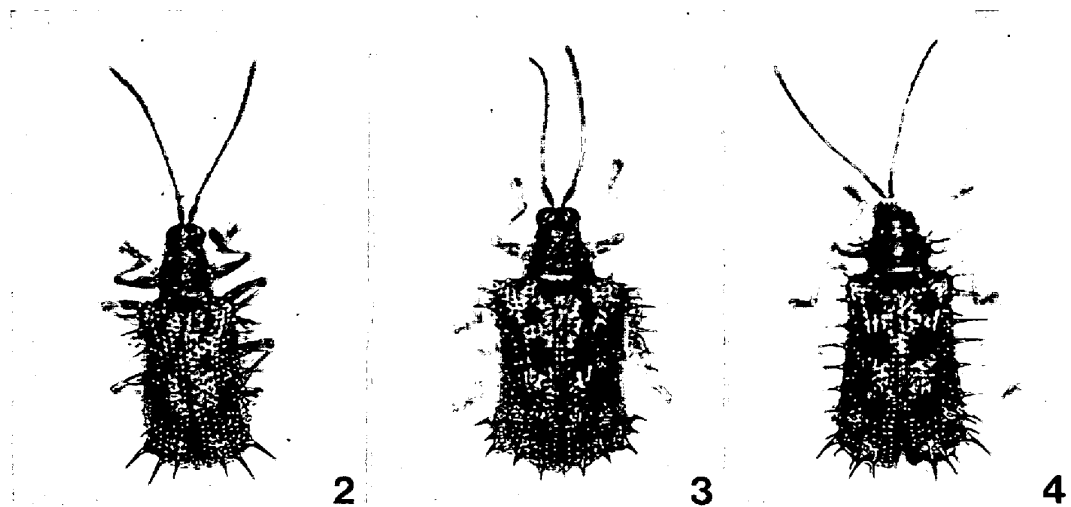
## Subfamily Chrysomelinae

53. *Ambrostoma mahesa* (HOPE, 1831)  
C. Nepal — 5 exs., Siwapuri Dara, 7. X. 1981, MT.
54. *Ambrostoma shutae* DACCORDI, 1977  
W. Nepal — 5 exs., Bumra, Jumla Dist., 23. IX. 1981, MT; 8 exs., Chautha betw. Jumla & Rara Lake, 23. IX. 1981, MT & MS; 6 exs., Neurgar, Jumla Dist., 23. IX. 1981, MS; 22 exs., Neurgar – Chautha nr. Jumla, 23. IX. 1981, MS.
55. *Ambrostoma sublaevis* CHEN, 1934  
C. Nepal — 2 exs., Kuldi – Chhomrong nr. Ghandrung, Parbat Dist., 22. X. 1981, MS.
56. *Chrysolina conglomerata* MAULIK, 1926  
C. Nepal — 3 exs., Rani Ban, Kathmandu, 29. X. 1981, MT; 4 exs., Rani Ban, Royal Forest, Kathmandu, 5. X. 1981, MS; 1 ex., Damphus Dara nr. Pokhara, 23–24. X. 1981, MS.
57. *Chrysolina parvati* DACCORDI, 1982  
C. Nepal — 14 exs., Chhomrong – Kiumrung nr. Ghandrung, 22. X. 1981, MS; 2 exs., Landrung – Damphus nr. Pokhara, 23. X. 1981, MS; 2 exs., Kiumrung – Ghandrung, 22. X. 1981, MS; 4 exs., Ghandrung – Landrung, 23. X. 1981, MT; 2 exs., Kiumrung nr. Ghandrung, 17. X. 1981, MS; 1 ex., Birethanti betw. Pokhara & Ghorapani, 13. X. 1981, MS; 1 ex., Damphus Dara nr. Pokhara, 23–24. X. 1981, MS.
58. *Chrysolina vishnu* (HOPE, 1831)  
C. Nepal — 3 exs., Kiumrung – Chhomrong, Parbat Dist., 18, 22. X. 1981, MT; 1 ex., Midi – Pothana, Kaski Dist., 23. X. 1981, MT; 3 exs., Hille, Parbat Dist., 14. X. 1981, MT; 2 exs., Phewa Lake, Pokhara, 25. X. 1981, S. AE leg. W. Nepal — 1 ex., Jumla, Jumla Dist., 20. IX. 1981, MT.
59. *Agrosteomela indica* (HOPE, 1831)  
NE. India — 1 ex., Tonglu, Singalila Dara, Darjeeling Dist., W. Bengal, 30. IX. 1983, MT; 1 ex., Tiger Hill, Darjeeling Dist., W. Bengal, 8. XI. 1981, MT.

- C. Nepal — 1 ex., Midi, Kaski Dist., 23. X. 1981, Y. NISHIKAWA leg.; 1 ex., Kakani nr. Kathmandu, 17. IX. 1981, MS; 3 exs., Deorali – Kuldi nr. basecamp of Mt. Machhapuchhare, 21. X. 1981, MS; 1 ex., Landrung – Damphus nr. Pokhara, 23. X. 1981, MS.
60. *Phaedon besucheti* DACCORDI, 1984  
NE. India — 1 ex., Tiger Hill, Darjeeling Dist., W. Bengal, 8. XI. 1981, MT; 2 exs., Gairibas, Singalila Ridge, W. Bengal, 5. XI. 1981, MS.
61. *Phaedon indicus* CHEN, 1961  
NE. India — 2 exs., Tiger Hill, Darjeeling Dist., W. Bengal, 8. XI. 1981, MT; 1 ex., Darjeeling, 28. IX. 1983, MS.
62. *Phaedon thompsoni* DACCORDI, 1978  
NE. India — 3 exs., Pasibhanjang, Singalila Ridge, W. Bengal, 4. XI. 1981, MS. W. Sikkim — 1 ex., Choka, 23. IX. 1983, MT.  
*Distribution.* NE. India\*, Sikkim.
63. *Phaedon* sp.  
W. Sikkim — 1 ex., Dzongri, 18. IX. 1983, MS.
64. *Linaeidea chlorina* MAULIK, 1926  
C. Nepal — 3 exs., Lumle, Kaski Dist., 13, 18. X. 1981, MT; 1 ex., Phewa Lake, Pokhara, 25. X. 1981, MT; 5 exs., Birethanti – Hille, nr. Ghorapani, 14. X. 1981, MS; 7 exs., Kakani nr. Kathmandu, 17. IX. 1981, MS.
65. *Oreomela indica* (JACOBY, 1896)  
W. Nepal — 1 ex., Jaljale Lekh, ca. 3,500 m, Jumla Dist., 1. X. 1981, MT.  
*Distribution.* Nepal\*, India.
66. *Oreomela* sp.  
NE. India — 2 exs., Thakam, Singalila Ridge, W. Bengal, 4. X. 1983, MS. W. Sikkim — 1 ex., Phitang, 23. IX. 1983, MT.
67. *Potaninia assamensis* (BALY, 1879)  
NE. India — 1 ex., Manjitar, Darjeeling Dist., W. Bengal, 8. XI. 1981, MS. C. Nepal — 2 exs., Midi – Pothana, Kaski Dist., 23. X. 1981, MT; 1 ex., Banjgara, Parbat Dist., 14. X. 1981, MT; 1 ex., Naudanda, Kaski Dist., 12. X. 1981, MT.

## Subfamily Cassidinae

68. *Lacoptera quadrimaculata* THUNBERG, 1789  
NE. India — 5 exs., Badamtam nr. Darjeeling, W. Bengal., 29. IX. 1983, MT. C. Nepal — 1 ex., Godavari nr. Kathmandu, 16. IX. 1981, MS.
69. *Glyphocassis trilineata* HOPE, 1831  
NE. India — 2 exs., Badamtam nr. Darjeeling, W. Bengal, 29. IX. 1983, MT.
70. *Cassida australica* BOHEMAN, 1855  
C. Nepal — 9 exs., Chhomrong – Kuldi nr. Ghandrung, 18, 21. X. 1981, MS; 1 ex., Deorali – Kuldi nr. basecamp of Mt. Machhapuchhare, 21. X. 1981, MS.
71. *Cassida nigriventris* BOHEMAN, 1854  
C. Nepal — 1 ex., Birethanti – Hille nr. Ghorapani, 14. X. 1981, MS. W. Nepal



Figs. 2-4. — 2, *Dactylispa atkinsoni* GESTRO (from Bagora); 3, *D. harsha* MAULIK (from Sundarijal - Okhreni); 4, *D. variabilis* MAULIK (from Bagora).

— 15 exs., Jumla, 19. IX. 1981, MS; 1 ex., Sinja - Jillya Chaur, 29. IX. 1981, MS; 1 ex., Jillya Chaur, Jumla Dist., 29. IX. 1981, MT.

72. *Cassida syratica* BOHEMAN, 1854

C. Nepal — 1 ex., Godavari nr. Kathmandu, 16. IX. 1981, MT. W. Nepal — 1 ex., Chaudhunga, Mugu Dist., 24. IX. 1981, MT; 1 ex., Jhari Lekh, 2,900-3,000 m, Mugu Dist., 25. IX. 1981, Y. NISHIKAWA leg.

73. *Cassida* sp.

NE. India — 2 exs., Darjeeling, W. Bengal, 28. IX. 1983, MS.

Subfamily Hispinae

74. *Lasiochila cyrindrica* (HOPE, 1831)

C. Nepal — 1 ex., Ghandrung - Landrung, 23. X. 1981, MS.

75. *Leptispa bengalensis* n. sp.

*Distribution.* NE. India

76. *Callispa feae* BALY, 1888 (Fig. 9)

NE. India — 10 exs., Sonada - Bagora, Darjeeling Dist., W. Bengal, 8. X. 1983, MS.

*Distribution.* India\*, Burma, N. Vietnam, Laos, Thailand, China (Yunnan).

77. *Dactylispa atkinsoni* GESTRO, 1897 (Fig. 2)

NE. India — 17 exs., Bagora nr. Darjeeling, W. Bengal, 9. XI. 1981, MS; 5 exs., Darjeeling, W. Bengal, 27, 28. IX. 1983, MT & MS; 1 ex., Sonada - Bagora, Darjeeling Dist., W. Bengal, 8. X. 1981, MS; 1 ex., Senchali - Sonada nr. Darjeeling, W. Bengal, 8. X. 1983, MT.

78. *Dactylispa brevispinosa* (CHAPUIS, 1877)

NE. India — 1 ex., Sonada - Bagora, Darjeeling Dist., W. Bengal, 8. X. 1983, MS. C. Nepal — 4 exs., Rani Ban, Royal Forest, Kathmandu, 5. X. 1981, 8. X.



- 1983, MS; 1 ex., Kakani nr. Kathmandu, 15. IX. 1981, MS; 1 ex., Siwapuri Dara, 7. X. 1981, MT; 1 ex., Sundarijal - Mulkharka, Kathmandu, 16. X. 1981, MT. W. Nepal — 1 ex., Jillya Chaur, Jumla Dist., 29. IX. 1981, MT; 1 ex., Jumla, Jumla Dist., 19. IX. 1981, MS; 1 ex., Ghughuti nr. Jumla, 21. IX. 1981, MS.
79. *Dactylispa harsha* MAULIK, 1919. (Fig. 3)  
C. Nepal — 2 exs., Sundarijal - Okhreni nr. Kathmandu, 6. X. 1981, MS.  
*Distribution.* Nepal\*, Assam, India.
80. *Dactylispa variabilis* MAULIK, 1919 (Fig. 4)  
NE. India — 2 exs., Bagora nr. Kurseong, 9. XI. 1981, MS. C. Nepal — 2 exs., Hinku Doban, Parbat Dist., 19. X. 1981, MT; 1 ex., Banthanti - Baichi Kharka, Parbat Dist., 17. X. 1981, MT.  
*Distribution.* Nepal\*, Sikkim, Assam, Burma.
81. *Dactylispa xanthopus* (GESTRO, 1898)  
NE. India — 6 exs., Sonada - Bagora, Darjeeling Dist., W. Bengal, 8. X. 1983, MS; 5 exs., Bagora nr. Kurseong, 9. XI. 1981, MS; 3 exs., Senchali - Sonada nr. Darjeeling, W. Bengal, 8. X. 1983, MT.  
*Distribution.* India\*, Nepal, Sikkim.
82. *Dactylispa* sp. 1  
C. Nepal — 1 ex., Melanche nr. Ghandrung, 17. X. 1981, MS.
83. *Dactylispa* sp. 2  
C. Nepal — 1 ex., Okhreni, Kathmandu, 6. X. 1981, MT.
84. *Rhadinosa lebongensis* MAULIK, 1919  
W. Sikkim — 1 ex., Yuksam, 26. IX. 1983, MS.
85. *Jambhala nekula* WÜRMLI, 1975 (Fig. 10)  
C. Nepal — 1 ex., Kakani nr. Kathmandu, 17. IX. 1981, MS.  
*Distribution.* Nepal\*, Bhutan.
86. *Platypria histrix* (FABRICIUS, 1798)  
C. Nepal — 3 exs., Rani Ban, Kathmandu, 29. X. 1981, MT; 1 ex., Sundarijal — Okhreni nr. Kathmandu, 6. X. 1981, MS.

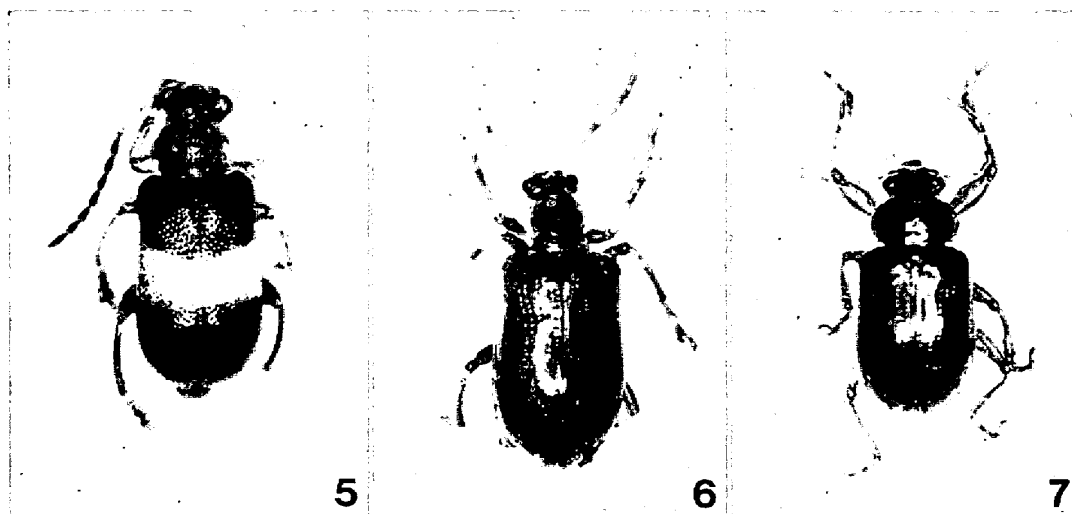
### Descriptions of New Species

#### *Lilioceris nepalensis* n. sp.

(Fig. 6)

Body small, light yellowish brown, with eyes, mandibles at apices and claws black; meso- and metathoraces, and first 2 visible abdominal sternites largely black; mesothoracic process largely yellowish brown; elytron with a round, dark opaque patch on sub-basal elevation.

Head almost as wide as prothorax at anterior angle, strongly constricted behind eyes; vertex weakly raised with a weak longitudinal sulcus posteriorly, covered with long pubescence along eyes; antenna rather slender, 3/5 as long as body; each segment slightly widened to apex; 1st segment short and stout; 2nd shortest, almost



Figs. 5-7. — 5, *Zeugophora pallidicincta* GRESSITT (from Darjeeling); 6, *Lilioceris nepalensis* n. sp. (holotype); 7, *Chrysonopa apicalis* n. sp. (holotype).

1/2 as long as 4th and almost as long as wide; 5th longest, almost 3 times as long as 2nd; 10th almost 3 times as long as wide; relative lengths of antennal segments as: 5th > 6th ÷ 7th ÷ 9th ÷ 11th > 8th ÷ 10th > 4th > 1st ÷ 3rd > 2nd. Pronotum slightly longer than wide, deeply constricted at middle and weakly ridged above, the constricted area almost straight at anterior margin, gently produced at posterior margin, narrowly margined at both ends; both anterior and posterior angles obtuse; disc gently convex, shining and scattered with fine punctures, with a narrow transverse furrow parallel to basal margin. Scutellum roundly triangular, glabrous and weakly depressed basally. Elytra distinctly wider than pronotum, almost parallel-sided for basal 3/5, thence roundly narrowed to apex; each elytron 3 times as long as wide; disc shining and convex with a transverse depression posteriorly to basal 1/5, with 11 regular rows of punctures on basal 1/2, almost impunctate on apical 1/3; punctures strongly impressed especially in sub-basal depression, where their diameters are larger than the distance between them, but rather weak basally; suture raised for full length; epipleuron convex, impunctate and shining; meta-thorax and abdomen almost glabrous and impunctate; metasternum with sparse hairs; mesothoracic process perpendicular and flat; tarsi slender; fore leg with 1st tarsal segment fully twice as long as wide.

Size. 4.8–5.7 mm in length, 2.2–2.5 mm in width.

*Specimens examined.* 2 exs. (one the holotype, in Entomological Institute, Hokkaido Univ., Sapporo), Siwapuri Dara, ca. 2,400 m, Bagmati, Nepal, 18–19. IX. 1987, H. TAKIZAWA leg.; 1 ex., Kuldi – Chhomrong, 2,400–2,000 m, Parbat Dist., Nepal, 21. X. 1981, M. TOMOKUNI leg.; 1 ex., Gairibas, 2,550–2,800 m, Singalila Dara, Darjeeling Dist., NE. India, 1. X. 1983, M. TOMOKUNI leg.

This new species looks like some light brownish *Lema* spp., such as *Lema rufotestacea* CLARK in its smaller size and coloration, but is easily distinguished from

them by the free tarsal claws. Among the Indian *Liliocerus*, this new species is characterized by its smaller size, and the dorsum which bears dark opaque patch basally. Sometimes first 3 visible abdominal sternites are largely black.

*Oomorhoides sakaii* n. sp.

Body small, slender and oblong; black with cupreous luster; elytra with strong cupreous luster, sometimes with dark bluish luster; antenna with 2 basal segments partly dark brown.

Vertex strongly convex and shining, with a deep fovea interiorly to eyes; frons flat, with a trace of transverse ridge anteriorly. Pronotum  $1 \frac{4}{5}$  as wide as long, almost straight at anterior margin, almost straightly narrowed from base to apex on lateral margins, broadly produced on posterior margin; surface shining, densely covered with shallow punctures. Elytra slightly wider than pronotum at base, widest at basal  $\frac{1}{5}$ , thence straightly narrowed posteriorly and rounded at apex; elytron about  $2 \frac{1}{3}$  as long as wide; disc rather densely covered with distinct punctures, which are distinctly larger than those on pronotum and have a tendency to arrange in about 20 longitudinal rows.

Size. 2.0–2.4 mm in length, 1.3–1.5 mm in width.

*Specimens examined.* NE. India — 1 ex., Tiger Hill, 2,680 m, Darjeeling Dist., 8. XI. 1981, M. TOMOKUNI leg.; 2 exs., Bagora, 2,150 m, nr. Darjeeling, 9. XI. 1981, M. TOMOKUNI leg.; 2 exs. (one the holotype in NSMT, Tokyo), Lamudhura, 2,800 m, Singalila Dara, Darjeeling Dist., 7. X. 1983, M. TOMOKUNI leg.; 2 exs., Gairibas, 2,550–2,800 m, Singalila Dara, Darjeeling Dist., 6. X. 1983, M. TOMOKUNI leg.; 1 ex., Tonglu, 3,040 m, Singalila Ridge, W. Bengal, 6. XI. 1981, M. SAKAI leg. W. Sikkim — 1 ex., Bakkhim, 2,670 m – Choka, 3,050 m, 13. IX. 1983, M. TOMOKUNI leg.

This new species is very close to *O. nepalensis* TAKIZAWA from Nepal and is distinguished from the latter by the smaller size, not reticulate vertex without distinct longitudinal depression, and frons with indistinct transverse ridge. Two smaller specimens which I mentioned in the description of the latter, should be referred to this new species. *O. nepalensis* was originally described as having elytron 3 times as long as wide by a slip of pen, which should be corrected as  $2 \frac{1}{2}$  times as long as wide. *O. chujoi* TAKIZAWA from Nepal is short oval with elytra more sparsely punctate, so that the distances between punctate-striae are distinctly wider than the diameter of punctures on the area posteriorly to humerus.

*Chrysonopa apicalis* n. sp.

(Figs. 1 h, 7)

Body rather elongate; dorsum dark brown with elytra brownish on apical  $\frac{2}{5}$ ; legs and antenna brown; venter brown, darkened in various degrees.

Head wider than pronotum at apex, shining and densely covered with punctures; clypeus arcuately emarginate at anterior margin; antenna slender,  $4/7$  as long as body; 1st segment stout, as long as 2nd; 3rd slightly shorter than 2nd; 4th and 5th, each as long as 1st; 6th to 11th almost equal in length to each other, each slightly longer than 5th and weakly widened to apex. Prothorax  $1\frac{3}{5}$  as wide as long, widest and obtusely angulate at middle, thence straightly narrowed to both angles, almost straight at anterior margin, weakly produced on posterior margin; both angles distinctly tuberculate; disc gently convex, rather densely covered with irregular punctures medially and sparsely so near margins, with a pair of short transverse depressions laterally on middle. Scutellum as long as wide, rounded at apex. Elytra basally almost as wide as prothorax, subparallel-sided for basal  $3/5$ , thence gently narrowed to apex; elytron 3 times as wide as long, with a well-developed sub-basal elevation, whose surroundings are well depressed; disc distinctly punctate-striate on basal  $1/2$ , almost impunctate on apical  $1/2$ , somewhat rugose posteriorly to well-developed humerus; punctures weak on sub-basal elevation; diameter of punctures larger than the distance between them, and almost as wide as the width of interstices; suture narrowly raised; lateral margins invisible from above. Prosternum transversely raised and longer than twice the width between coxae, rough with large punctures posteriorly; femora especially of fore leg distinctly incrassate, with a minute tooth beneath; fore tibia distinctly longer than hind tibia, and widened from middle to apex; fore tarsi with 1st segment broad and roundly triangular.

Size. 4.2–4.3 mm in length, 2.0–2.1 mm in width.

*Specimens examined.* 3 exs. (one the holotype in NSMT, Tokyo), Choka, 3,050 m nr. Yuksam, W. Sikkim, 13, 23, IX. 1983, M. TOMOKUNI & M. SAKAI leg.; 1 ex., Gairibas, 2,600 m, Singalila Ridge, NE. India, 1. X. 1983, M. SAKAI leg.

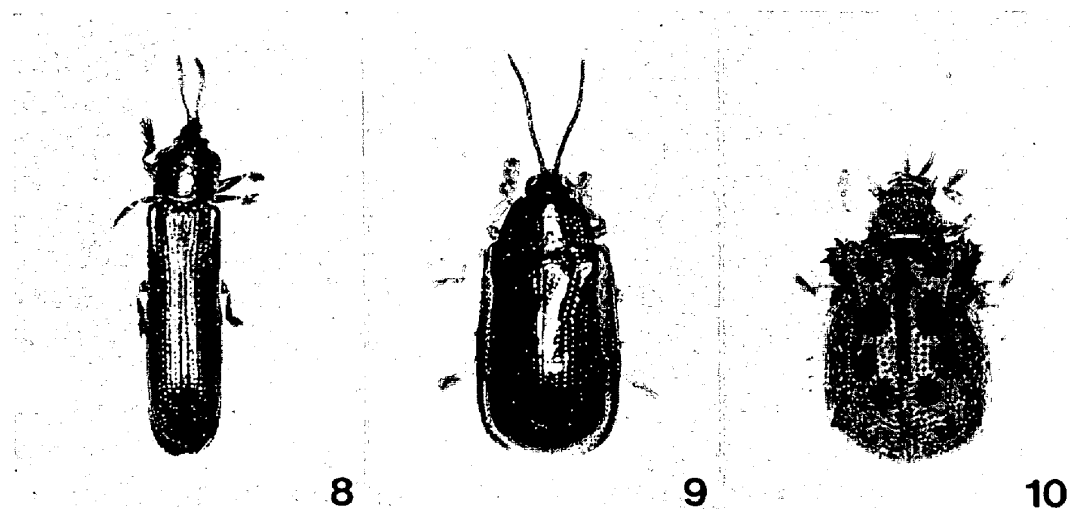
This new species is characterized by the dark brown dorsum with apically brown elytra, pronotum with a pair of lateral depressions, and by the elytra impunctate posteriorly. This species is distinguished from *C. rotundicollis* (JACOBY) from Assam by the obtusely angulate pronotum, which has a pair of lateral depressions, and less strongly punctate and not costate elytra.

*Leptispa bengalensis* n. sp.

(Figs. 1 i, 8)

Body narrow and subparallel-sided; black with mouth-parts, femora at apex and tarsi more or less brownish; abdomen wholly reddish testaceous.

Head flat, distinctly widened and gently emarginate at apex in dorsal view, with a short median longitudinal furrow and a few large punctures between eyes; antenna as long as the length of head and prothorax together, gently widened from 3rd to 10th segment; 1st segment broad, angularly produced laterally at apex; 10th almost as wide as long. Pronotum slightly wider than long, widest at apical  $1/3$ , thence rather straightly and weakly narrowed to base, and roundly so to apex;



Figs. 8-10. — 8, *Leptispa bengalensis* n. sp. (from Bagora); 9, *Callispa feae* BALY (from Sonada - Bagora); 10, *Jambhala nekula* WÜRMLI (from Kakani).

almost straight at anterior margin, sinuate at posterior margin; anterior angle rounded, the posterior rectangular; disc convex, broadly depressed along lateral margins which are narrowly reflexed, and densely and irregularly covered with deep, large punctures; interspace with smaller punctures; median lobe broad, deeply depressed along basal margin. Scutellum subquadrate and shining. Elytra wider than prothorax at base, very weakly narrowed from humerus to middle, thence weakly widened to apical 1/3; elytron about 5 1/2 times as long as wide; disc weakly depressed basally and longitudinally depressed interiorly to humerus, with 11 regular rows of deep, oblong punctures; interstices as wide as or narrower than diameter of punctures; 9th interstice costate from behind humerus to apex; all the interstices more or less raised near apex; apex weakly depressed; metasternum finely reticulate, and scattered with large punctures; tarsi broad.

Size. 5.1-5.5 mm in length, 1.3-1.4 mm in width.

*Specimens examined.* 1 ex. (holotype in NSMT, Tokyo), Sonada, 2,100 - Bagora, 2,140 m, Darjeeling Dist., W. Bengal, India, 8. X. 1983, M. SAKAI leg.; 1 ex., Bagora, 2,140 m nr. Kurseong, W. Bengal, India, 9. XI. 1981, M. SAKAI leg.

This new species is similar to *L. abdominalis* BALY from China, but is clearly distinguished from the latter by the pronotum which is widened from base to apical 1/3, and head widened anteriorly. *L. magna* CHEN et YU from Yunnan has the head similarly shaped, but is larger in size and has the head lacking the median furrow.

#### Appendix (Altitude of Localities)

W. Sikkim — Bakkhim (2,670 m); Chaozing (2,220 m); Choka (3,050 m); Dzungri (3,970 m); Phithang (3,600-3,660 m); Prek Chu (2,250 m); Yuksam (1,780 m);

- Zomphuk (2,000 m).
- C. Nepal — Baichi Kharka (2,300 m); Banjgara (1,250 m); Banthanti (2,600 m); Birethanti (1,350 m); Chhomrong (2,100 m); Damphus Dara (1,350 m); Deorali (3,200 m); Dovan (3,400 m); Ghandrung (1,890 m); Ghorapani (2,800 m); Godavari (1,530–1,650 m); Hille (1,400 m); Hinku Dovan (2,400 m); Kakani (2,000 m); Kiumrung (1,800 m); Kuldi (2,800 m); Landrung (1,600 m); Lumel (1,600 m); Melanche (2,100 m); Midi (1,700 m); Mulkharka (1,600 m); Naudanda (2,100 m); Nayathanti (2,400 m); Okhreni (2,100 m); Phedi (3,200 m); Phewa Lake (800 m); Pokhara (960 m); Rani Ban (1,800 m); Siwapuri Dara (2,400 m); Sundarijal (1,370 m).
- W. Nepal — Bhulbhule (3,270 m); Bumla (3,100 m); Chautha (2,900 m); Ghughuti (2,660 m); Jaljale (3,400 m); Jhari Lekh (2,900–3,000 m); Jillya Chaur (2,700 m); Jumla (2,340–2,450 m); Neurgar (2,800 m); Sinja (2,650 m).
- NE. India — Bachabai (730 m); Bagora (2,140 m); Badamtam (960 m); Chitre (1,380 m); Darjeeling (2,100 m); Gairibas (2,550–2,800 m); Jaubari (2,800 m); Kalapokhri (3,000–3,150 m); Lamudhura (2,800 m); Manibhanjang (2,100–2,300 m); Manjitar (320 m); Pasibhanjang (3,410 m); Senchali (2,250 m); Sonada (2,100 m); Thakam (3,350 m); Tiger Hill (2,630 m); Tista (250 m); Tonglu (3,040 m).

#### Selected Literature

- JACOBY, M., 1908. Fauna of British India, Chrysomelidae 1. 534 pp. Taylor & Francis, London.
- MAULIK, S., 1919. Fauna of British India, Chrysomelidae (Hispinæ & Cassidinae). 439 pp. Taylor & Francis, London.
- 1926. Ditto, Chrysomelidae (Chrysomelinae & Halticinae). 442 pp. Taylor & Francis, London.
- TAKIZAWA, H., 1987. Notes on chrysomelid beetles (Coleoptera, Chrysomelidae) of India and its neighboring areas. Part 5. *Proc. Jpn. Soc. syst. Zool.*, (35): 40–58.