

Jpn. J. Ent., 61 (2): 216. June 25, 1993

New Record of *Acroclita nigrovenana* (Lepidoptera, Tortricidae) from Japan

Yoshitsugu NASU

Osaka Plant Protection Office, Shakudo 442, Habikino, Osaka 583, Japan

Key words: Tortricidae; *Acroclita nigrovenana*; Japan; litchi.

Several specimens of *Acroclita nigrovenana* KUZNETZOV, 1988 (Trudy Zool. Inst. AN SSSR, 176: 88) described from North Vietnam, were collected in Japan. Dr. K. KAWASAKI has succeeded in obtaining this species from larvae on litchi in Okinawa Island. The host-plant of this species was unknown. The moth is illustrated for the first time.

I express my thanks to Profs. T. YASUDA and S. MORIUTI of the University of Osaka Prefecture, and Dr. F. KOMAI of the Osaka University of Arts, for allowing me to examine the specimens, and to Dr. K. KAWASAKI of the Okinawa Prefectural Agricultural Experiment Station for giving me the specimens and information about the biology.

Specimens examined. Yakushima Is., Kurio, 1 ♂, 4. XI. 1976; Onoaida, 1 ♂, 8. IX. 1979. Okinawa Is., Chinen, 1 ♂, 1 ♀, 24. III. 1980; Higashi-son, 2 ♂, 4 ♀, em. 14. VII. 1992, ex larvae on litchi. Ishigaki Is., Mt. Omoto-dake, 1 ♂, 2. V. 1978; Nagura, 2 ♀, 9. XI. 1982. Iriomote Is., Kampira, 3 ♂, 3 ♀, 30–31. III. 1980; Urauchi, 2 ♂, 2 ♀, 29. III. 1980; Funaura, 2 ♂, 25. III. 1982, 1 ♂, 4 ♀, 11–12. XI. 1982.

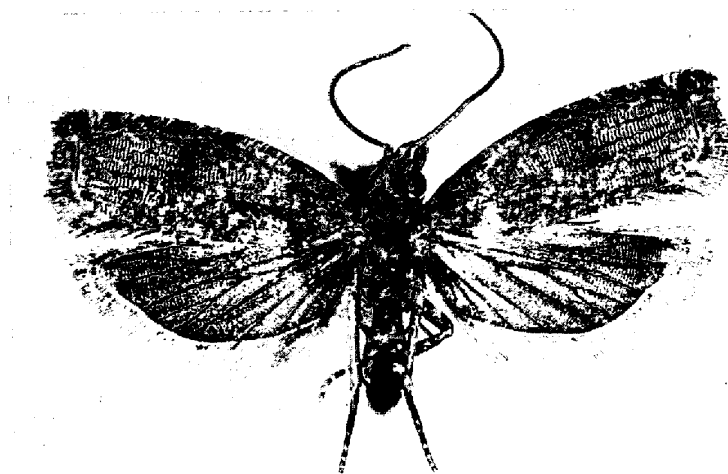


Fig. 1. Male adult of *Acroclita nigrovenana* KUZNETZOV.

Distribution. North Vietnam, Japan (Yakushima Is., Ryukyus).

Host-plant. Litchi, *Litchi chinensis* SONNERAT (Sapindaceae).

Biological note. The breeding data and field collection dates of adults suggest that there are several generations per year in the Ryukyus. The larvae spin the young leaves of litchi together (KAWASAKI, pers. comm.).

(Received March 1, 1993; Accepted March 26, 1993)