

ENTOMOLOGICAL RESULTS OF THE SCIENTIFIC
SURVEY TO THE TOKARA ISLANDS,
VIII. Hemiptera-Heteroptera

By Syoiti Miyamoto

Biological Laboratory, General Education Department, Kyushu University
and

Terunobu Hidaka

Entomological Laboratory, Kyushu University, Fukuoka

Introduction

There have been but a little fragmental informations on the Heteropterous fauna of the Tokara Islands which are lying between Kyushu and the Amami Group (S. Miyamoto, *Nymph* vol. 2, 1953; S. Miyamoto, T. Nakane and S. Uéno, *Shin-Konchû*, vol. 7, nos. 1 and 2, 1954; *Asahi Shinbunshû*, Tokara no shimajima, *Asahi Photo-Book* 2, 1954; T. Esaki and S. Miyamoto, *Sieboldia*, vol. 1, no. 3, 1955). In 1953, the faunal survey of the islands was undertaken from May 25th to June 12th by the Osaka Museum of Natural History. The authors have studied the Heteropterous insects among the collection which was brought back by the members of the expedition.

In the present article, the bugs of higher families were recorded with the exception of Cydnidae and Aradidae.

The type specimen of a new species of the Lygaeidae and specimens recorded here are in the collection of the Osaka Museum of Natural History and a part of the latter is preserved in the collection of Kyushu University.

The authors are greatly indebted to Mr. Yoshitaka Tsutsui, the Director of the Tokara expedition, Prof. Takehiko Nakane of Kyoto Prefectural University, Mr. Shun-ichi Uéno of Kyoto University and other members of the expedition for their kind help in studying valuable material.

Further they express their sincere thanks to the late Prof. Teiso Esaki for his kind advice during his life and also to Prof. Keizô Yasumatsu of Kyushu University for his kind help and encouragement in the course of this study.

Family Plataspidae

1. *Coptosoma punctissimum* Montandon
Specimen examined: 1 ♀, Takarajima, 30. v. 1953 (T. Nakane).

Family Pentatomidae

2. *Scotinophara lurida* Burmeister
Specimens examined: 9 ♂ 1 ♀, Takarajima, 26. v. - 1. vi. 1953 (S. Miyamoto and

* Contribution Ser. 2, No. 57, Entomological Laboratory, Kyushu University.

- T. Nakane).
3. *Eysarcoris ventralis* Westwood
Specimens examined: 2 ♂ 4 ♀, Nakanoshima, 3-13. vi. 1953 (S. Miyamoto and T. Nakane); 18 ♂ 16 ♀, Takarajima, 26. v.-1. vi. 1953 (S. Miyamoto and T. Nakane).
 4. *Carbula crassiventris* Dallas
Specimens examined: 1 ♂, Takarajima, 26. v.-1. vi. 1953 (T. Nakane); 10 ♂ 10 ♀, Nakanoshima, 3-13. vi. 1953 (S. Miyamoto, T. Nakane, and S. Uéno).
 5. *Eurydema pulchra* Westwood
Specimens examined: 3 ♂ 11 ♀, Takarajima, 26. v.-1. vi. 1953 (S. Miyamoto, T. Nakane, and S. Uéno).
 6. *Alcimocoris japonensis* Scott
Specimen examined: 1 ♀, Nakanoshima, 3-13. vi. 1953 (T. Nakane).
 7. *Nezara viridula* Linné
Specimens examined: 4 ♂ 1 ♀, Takarajima, 26. v.-1. vi. 1953 (S. Miyamoto and T. Nakane).
 8. *Plautia stali* Scott
Specimens examined: 1 ♂ 4 ♀, Takarajima, 26. v.-1. vi. 1953 (S. Miyamoto and T. Nakane).
 9. *Anipes grisea* Banks
Specimens examined: 8 ♂ 11 ♀, Nakanoshima, 3-13. vi. 1953 (S. Miyamoto, T. Nakane, and S. Uéno).
 10. *Piezodorus rubrofasciatus* Fabricius
Specimens examined: 4 ♂ 11 ♀, Takarajima, 26. v.-1. vi. 1953 (S. Miyamoto).
 11. *Laprius varicornis* Dallas
Specimen examined: 1 ♂, Nakanoshima, 3-13. vi. 1953 (Uéno).
 12. *Cantheconidea furcellata* Wolff
Specimens examined: 1 ♂ 1 ♀, Nakanoshima, 3-13. vi. 1953 (T. Nakane); 5 ♀, Takarajima, 26. v.-1. vi. 1953 (T. Nakane).
 13. *Andrallus spinidens* Fabricius
Specimens examined: 2 ♂ 1 ♀, Nakanoshima, 3-13. vi. 1953 (S. Miyamoto and T. Nakane); 2 ♂ 1 ♀, Takarajima, 26. v.-1. vi. 1953 (S. Miyamoto and T. Nakane); 2 ♂ 1 ♀, 26. v.-1. vi. 1953 (S. Miyamoto and T. Nakane).
 14. *Megymenum gracilicornis* Dallas
Specimens examined: 2 ♂ 3 ♀, Nakanoshima, 3-13. vi. 1953 (T. Nakane and R. Kono).
 15. *Eumenotes obscura* Westwood
Specimens examined: 2 ♀, Takarajima, 26. v.-1. vi. 1953 (S. Uéno).

Family Coreidae

16. *Homoeocerus unipunctatus* Thunberg
Specimen examined: 1 ♀, Nakanoshima, 25. v. 1953 (S. Miyamoto).
17. *Hygia opaca* Uhler
Specimens examined: 11 ♂ 7 ♀, Nakanoshima, 3-13. vi. 1953 (S. Miyamoto and T. Nakane).
18. *Acanthocoris sordidus* Thunberg
Specimens examined: 1 ♂ 5 ♀, Takarajima, 26. v.-1. vi. 1953 (T. Nakane); 1 ♂ 1 ♀, Nakanoshima, 6. vi. 1953 (S. Miyamoto).

19. *Cletus rusticus* Stål

Specimens examined: 2 ♂ 1 ♀, Takarajima, 26. v.-1. vi. 1953 (S. Miyamoto and T. Nakane); 2 ♂ 1 ♀, Nakanoshima, 3-13. vi. 1953 (S. Miyamoto).

20. *Cletus trigonus* Thunberg

Specimens examined: 6 ♂ 4 ♀, Takarajima, 26. v.-1. vi. 1953 (S. Miyamoto, T. Nakane and S. Uéno); 1 ♂ 2 ♀, Nakanoshima, 3-13. vi. 1953 (S. Miyamoto and S. Uéno).

21. *Cletus bipunctatus* Westwood

Specimens examined: 1 ♂ 1 ♀, Nakanoshima, 3-13. vi. 1953 (S. Nakane and S. Uéno).

23. *Paraplesius unicolor* Scott

Specimens examined: 1 ♀, Takarajima, 26. v.-1. vi. 1953 (S. Miyamoto); 1 ♀, Nakanoshima, vi. 3-13. 1953 (S. Miyamoto).

Family **Largidae**24. *Physopelta cincticollis* Stål

Specimen examined: 1 ♀, Nakanoshima. 3-13. vi. 1953 (S. Miyamoto).

Family **Lygaeidae**25. *Nysius* sp.

Specimens examined: 10 ♂ 6 ♀, Takarajima, 26. v.-1. vi. 1953 (S. Miyamoto and T. Nakane); 7 ♂ 6 ♀, Nakanoshima, 3-13. vi. 1953 (S. Miyamoto and T. Nakane).

26. *Lygaeus hospes* Fabricius

Specimens examined: 3 ♂ 2 ♀, Takarajima, 26. v.-1. vi. 1953 (S. Miyamoto, T. Nakane and S. Uéno); 1 ♂, Nakanoshima, 3-13. vi. 1953 (S. Miyamoto).

27. *Lygaeus servus* Fabricius

Specimens examined: 2 ♂ 4 ♀, Takarajima, 26. v. 1953 (T. Nakane and S. Uéno).

28. *Arocatus sericans* Stål

Specimen examined: 1 ♂, Takarajima, 26. v.-1. vi. 1953 (T. Nakane).

29. *Pirkimerus esakii* sp. nov. (Fig. 1)

Body blackish brown; head black, ocelli reddish, central lobe of head, antennae, legs, clavus, and apical corial angles brown; the fourth antennal segments light blackish brown; rostrum, hemelytra yellow; membrane dark yellow, veins on membrane dark yellow. Coloration of body unique.

Body much elongate; head small, ellipsoid in form, and with a few, erect hairs, eyes somewhat flat and broad, apex of head produced anteriorly; antennae with pubescence, the first antennal segment surpassing the apex of head, and the fourth the longest, the proportional lengths of the antennal segments- I : II : III : IV=0.5 : 0.7 : 0.9 : 1.5; rostrum short and covered with erect hairs, apex of rostrum passing the base of head, the first and second segments subequal in length, third the shortest, the apical segment slightly shorter than the second; pronotum longer than wide, with long, and erect hairs, the anterior margin strongly incised, the posterior margin curved anteriorly, and the lateral margins weakly constricted at the posterior two-thirds, the posterior one third of pronotum distinctly concave at the disc; scutellum with short hairs, the apex rounded, and the lateral margins

slightly curved inwardly, the disc of scutellum longitudinally convex, scutellum almost one third as long as pronotum; pro-, meso-, and metapleura and sterna densely covered with long, erect hairs; legs with long hairs which are mixed with pubescence, fore femora more swollen than the others, fore and hind tibiae with a few teeth and their apices each with a strong spine, the first segments of middle and hind tarsi distinctly longer than each tibiae; apex of hemelytra extending posteriorly to the median part of the seventh abdominal tergite, clavus and corium with hairs, costal margins incised gently at one third from the base, clavus with three rows of punctures, membrane broader than corium, each vein not extending to the outer margin of membrane; abdomen longer than thorax and head taken together and densely covered with long hairs.

Length of body: male 0.8 mm.

Female unknown.

Type locality: Japan (Tokara Islands).

Holotype male, Nakanoshima, Tokara Islands, 3-13. vi. 1953 (S. Uéno).

This species is described from a unique specimen collected by the sweeping method among bamboo bushes.

30. *Ishnodemus obnubilis* Distant

Specimens examined: 2 ♂ 1 ♀, Takarajima, 26. v.-1. vi. 1953 (S. Miyamoto and T. Nakane).

31. *Iphicrates spinicaput* Scott

Specimen examined: 1 ♀, Nakanoshima, 3-13. vi. 1953 (T. Nakane).

32. *Blissus yakuensis* Hidaka

Specimen examined: 1 ♂, Nakanoshima, 3-13. vi. 1953 (T. Nakane).

33. *Blissus japonicus* Hidaka

Specimen examined: 1 ♂, Nakanoshima, 3-13. vi. 1953 (Y. Kono).

34. *Blissus kyushuensis* Hidaka

Specimen examined: 1 ♀, Nakanoshima, 3-13. vi. 1953 (S. Miyamoto).

35. *Geocoris proteus* Distant

Specimen examined: 1 ♂, Takarajima, 26. v.-1. vi. 1953 (S. Uéno).

36. *Paromius jejurus* Distant

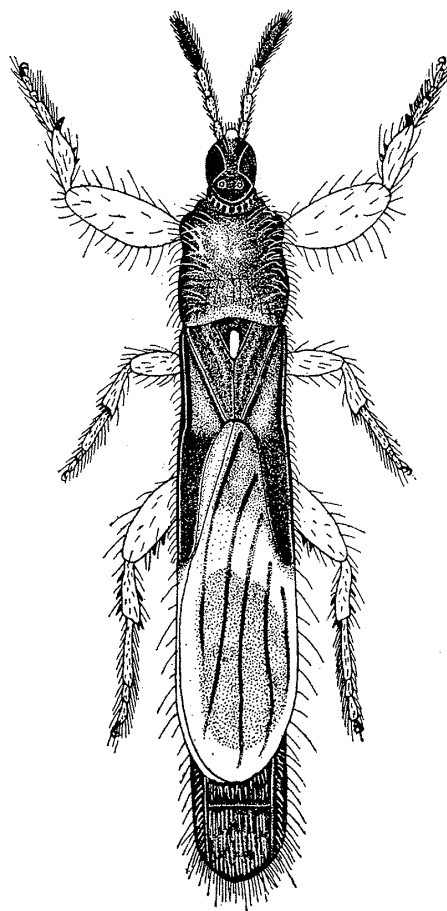


Fig. 1. *Pirkimerus esakii* sp. nov.

- Specimens examined: 3 ♂ 5 ♀, Nakanoshima, 3-13. vi. 1953 (S. Miyamoto, T. Nakane and O. Tsujimoto).
37. *Exoptochiamera japonica* Distant
Specimens examined: 1 ♂ 2 ♀, Takarajima, 26. v.-1. vi. 1953 (S. Miyamoto); 1 ♀, Nakanoshima, 3-13. vi. 1953 (S. Miyamoto).
38. *Pachyprachius pallicornis* Dallas
Specimens examined: 5 ♀, Takarajima, 26. v.-1. vi. 1953 (S. Miyamoto); 11 ♀, Nakanoshima, 3-13. vi. 1953 (S. Miyamoto and T. Nakane).
39. *Pachyprachius nigriceps* Dallas
Specimen examined; 1 ♀, Takarajima, 26. v.-1. vi. 1953 (S. Miyamoto).
40. *Pachyprachius izzardi* Hidaka
Specimens examined: 4 ♀, Takarajima, 26.v.-1. vi. 1953 (S. Miyamoto).
41. *Sadoletus valdazi* Bergroth
Specimen examined: 1 ♀, Nakanoshima, 3-13. vi. 1953 (T. Nakane).

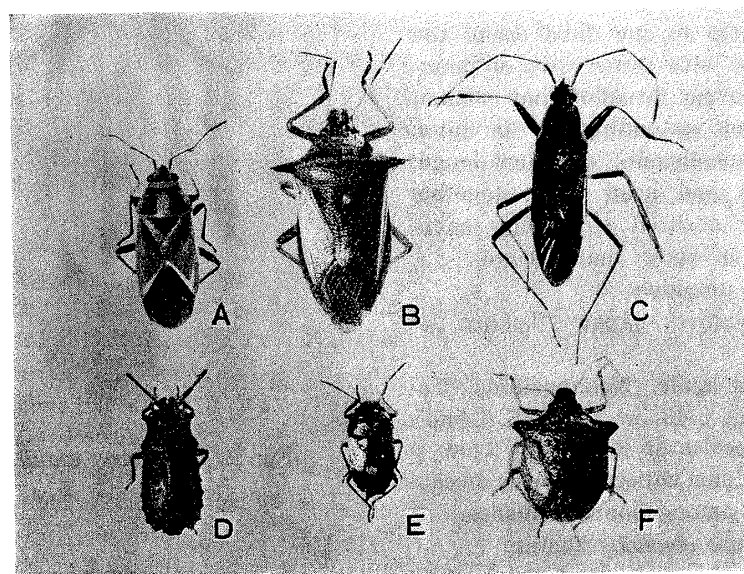


Fig. 2. A. *Lygaeus servus* Fabricius; B. *Andrallus spinidens* Fabricius; C. *Dieuches femoralis* Dohrn; D. *Eumenotes obscura* Westwood; E. *Anipes grisea* Banks; F. *Carbula crassiventris* Dallas.

42. *Appoloniuss crassa* Distant
Specimens examined: 1 ♂ 1 ♀, Nakanoshima, 3-13. vi. 1953 (T. Nakane).
43. *Lasiosomus pallipes* Scott
Specimen examined: 1 ♀, Nakanoshima, 3-13. vi. 1953 (Miyamoto).
44. *Dieuches femoralis* Dohrn
Specimens examined: : 3 ♀, Takarajima, 26. v.-1. vi. 1953 (T. Nakane and S. Uéno); 3 ♂ Nakanoshima, 3-13. vi. 1953 (S. Miyamoto).

45. *Aphanus fallaciosus* Matsumura
Specimens examined: 1♂3♀, Takarajima, 26. v.-1. vi. 1953 (S. Miyamoto).
46. *Lethaeus dallasi* Distant
Specimens examined: 2♀, Nakanoshima, 3-13. vi 1953 (S. Miyamoto and S. Uéno).
47. *Gastrodes japonicus* Stål
Specimen examined: 1♂, Nakanoshima, 3-13. vi. 1953 (T. Nakane).

日 本 未 記 録 の カ メ ム シ

日 高 輝 展

1. *Aednus obscurus* Dallas (Pentatomidae)

1851年 Dallas が List Hemi. i, p. 145, t. 3, f. 5 に新属新種として記載した。1952年5月24日鹿児島県佐多町大中尾峠一辺塚の間でホオロクイチゴの葉裏にうごめいている本種1♂が平嶋義宏氏により採集された。本種の分布は日本の外, ビルマ, マラヤ, 香港である。

2. *Praetextates typicus* Distant (Pentatomidae)

1901年 W. L. Distant が Trans. Ent. Soc. 1901, p. 584 に新属新種として発表した。1952年5月23日鹿児島県佐多町伊座敷一東山崎の間で本種1♀が故江崎悌三博士により採集された。なお新昆虫6(3):33に長谷川仁氏が本種の種名について簡単に述べている。国外分布はビルマ。

上記2種の標本は九州大学昆虫学教室に保存されている

末記ながら, 日常御指導賜わる安松京三教授, 宮本正一助教授, 平嶋義宏助教授並びに British Museum (Nat. Hist.) の Dr. R. J. Izzard に厚く御礼申し上げます。

九州にオオメダカナガカメムシ産す

日 高 輝 展

Malcus japonicus Ishihara et Hasegawa オオメダカナガカメムシは, 従来本州から知られていたが, 筆者は次の如く標本を検することができたので報告する。

1. 熊本県, 国見山, 1957年8月11日, 1♂(大塚勲氏採集)。
2. 福岡市南公園, 1959年6月17日, 1♂(安河内隆一氏採集)。

前者は九大農学部昆虫学教室に, 後者は九大教養部生物学教室 宮本正一助教のもとにそれぞれ保存されている。

末記ながら安松京三先生, 宮本正一先生及び大塚勲氏に厚く御礼申し上げます。