

A NEW SPECIES OF THE GENUS *PELAMIA*
FROM OKINAWA
(Lepidoptera, Noctuidae)

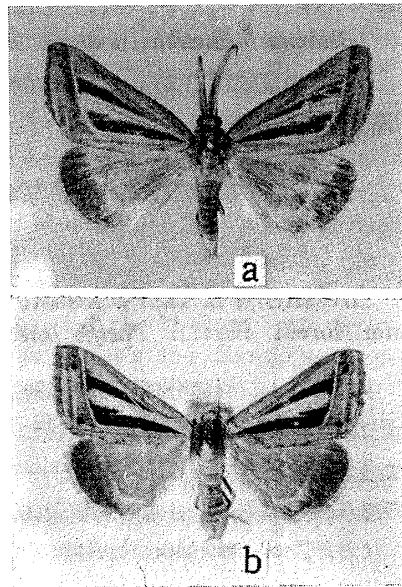
By Hiroshi Inoue* and Shigero Sugit†

Pelamia bifasciata sp. nov.

Expanse 31-34 mm, length of forewing 17-19 mm. Forewing straw colour irrorated with fuscous scales especially along costal margin, subcostal, terminal and hindmarginal areas with olive hue, there are two black bands outwardly defined by a pale yellow postmedian line, one of the bands is starting from inside cell and running along veins 5 and 7, the other arising from subbasal area and running along veins 1 and 2 below cell, both expanding distad, postmedian line distinct, starting from subcostal area, oblique inward, strongly curved baseward along ventral margin of the black band, subterminal pale line defined by fuscous clouding, running from costa near apex to tornus, a black spot between veins 6



Pelamia bifasciata Inoue et Sugi.
♂ genitalia.



Pelamia bifasciata Inoue et Sugi.
a. ♂, holotype, b. ♀, paratype.

* 4157, Kugenuma, Fujisawa City, Kanagawa Pref.

† 112, 4-chome, Iriarai, Ôta-ku, Tokyo.

and 7 just inside the line, another spot near tornus behind vein 2 and a smaller one beyond vein 7 frequently vanished, terminal line dark brown, fringe pale yellow, outer half fuscous. Hindwing with terminal area fuscous, postmedian pale fascia straight from costa to vein 2, angled there, thence curved inward and running into fold, fringe nearly as on forewing. Under surface pale yellow, tinged weakly with red-brown and dotted with fuscous scales, pale postmedian line of upper surface of forewing faintly traceable.

Male genitalia: symmetrical. Uncus normal, pointed, without free costal process as in *P. electaria* (Bremer), ventral process moderate, distinctly shorter than in *electaria*, in which it extends far beyond apex of valva and strongly curved, saccus relatively long, aedoeagus long, with a minute process bearing several teeth at orifice, cornutus wanting.

Holotype (♂), allotype (♀) and paratypes: Shuri, Okinawa, 29. iv. 1960, 1♂; 5 & 14. v. 1960, 2♀; 5, 8 & 9. vi. 1960, 3♀ (coll. S. Higashihirachi). Holotype and 1 paratype in coll. Sugi, and allotype and 3 paratypes in coll. Inoue.

Readily distinguishable from *P. electaria* (Bremer) by the peculiar double black bands of forewing.

We have to thank Mr. Higashihirachi for his kindness in giving us the valuable specimens.

摘 要

本文には沖縄で東平地清二氏が採集され、われわれに研究をゆだねられた蛾のうち、首里で1960年の5月から6月に発見されたヤガ科の一新種を記載した。

Pelamia bifasciata Inoue et Sugi フタクロオビクチバ (新称)

日本の既知種である *P. electaria* (Bremer) ユミモンクチバとは、前翅にある2つの黒帯から区別される。

抄 録

Gressitt, J. L. and S. Kimoto (1961): The Chrysomelidae (Coleopt.) of China and Korea. Part 1. *Pacific Insects Monograph* 1A: 1-299, with 77 figs.

中国のハムシ科の分類に関する綜説の第1部で、Sagrinae 亜科から Eumolpinae 亜科までの12亜科77属691種を取扱っており、各種までの完全な検索表と、170種に及ぶ見事な全形図は圧巻である。中国に分布しない日本を含む近隣地域の種も便宜的に検索表に含められている部分があり、日本の研究者にとつても欠くことのできない好著である。

なお、Pac. Ins. Mon. 1A は1,400円で、福岡市箱崎九州大学農学部昆虫学教室安松京三教授あて申込みば入手できる。
(神谷寛之)