

Kontyû, 32 (3) : 443-447. 1964

日米科学協力研究：太平洋地域の昆虫類の地理的分布と生態
Japan-U. S. Co-operative Science Program: Zoogeography and
Ecology of Pacific Area Insects

THE STAG-BEETLES OF THE AMAMI
ISLANDS OF THE LOO-CHOOS
(Coleoptera, Lucanidae)

By Yoshihiko Kurosawa

Department of Zoology, National Science Museum, Tokyo

Based chiefly upon the collection of the researching members of the above-captioned project in 1963 to the three islands of the northern Loo-choos, such as Amami-Oshima, Tokunoshima and Okinoerabu-jima, the author enumerates, in the present paper, the stag-beetles of these islands gathered to the author's hand by various sources. Besides the materials mentioned above, the materials listed here are composed of those of Dr. S. Uéno's trip in August 1958, of Mr. I. Fujiyama's in August 1960, of Mr. Y. Ogata's in August 1960, of Prince Masahito's in July 1961, of Mr. S. Shinonaga's in June 1963, and those kindly presented from Prof. T. Shirôzu for study. The members of the above-captioned project were the following entomologists: Dr. J. L. Gressitt, Dr. Y. Hirashima, Dr. H. Inoue, Prof. S. Itô, Prof. R. Kanô, Prof. T. Okada, Mr. T. Yamasaki, Dr. K. Yano, Prof. K. Yasumatsu, Dr. C. M. Yoshimoto, and the author himself. To the gentlemen mentioned above the author must express his sincere gratitude for their kind assistance and co-operation.

Abbreviations of the collector and the islands:

F: I. Fujiyama, G: J. L. Gressitt, I: H. Inoué, K: Y. Kurosawa, M: Prince Masahito, Og: Y. Ogata, Ok: T. Okada, S: S. Shinonaga, U: S. Uéno, Ya: T. Yamasaki, Yo: C. M. Yoshimoto.

Am.: Amami-Oshima, Tok.: Tokunoshima, Oki.: Okinoerabu-jima.

The representative part of this collection will be deposited in the National Science Museum, Tokyo, while the duplicate parts will be preserved in the Entomological Laboratory, Faculty of Agriculture, Kyushu University, Fukuoka, and the Bishop Museum, Honolulu, excepting a paratype of *Rhaetulus crenatus recticornis* Y. Kurosawa, which will be preserved in the Entomological Laboratory of Tokyo Agricultural University.

Acknowledgment is made of the partial financial support of this investigation through a grant from the Japan Society for the Promotion of Science as part of the Japan-U. S. Co-operative Science Program.

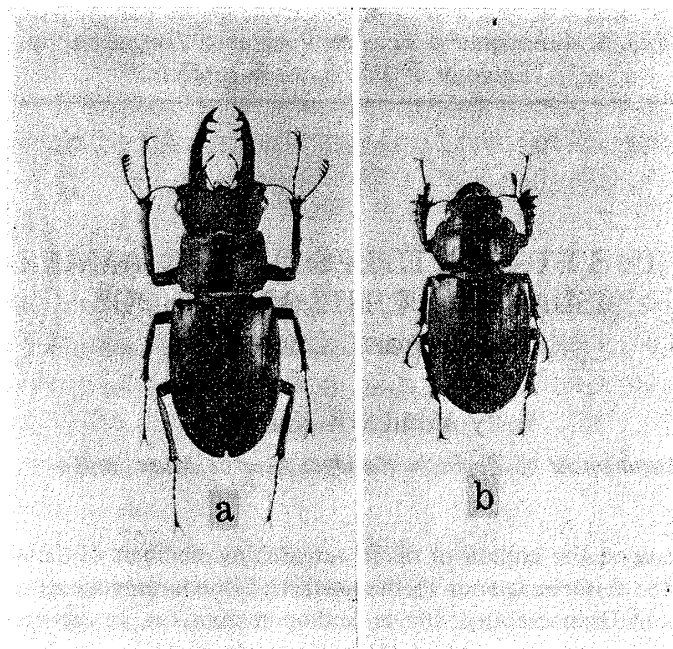


Fig. 1. *Lucanus ferriei* Planet. a: ♂, b: ♀.

Family LUCANIDAE

Subfamily Lucaninae

1. *Lucanus ferriei* Planet, 1898 アマミヤマクワガタ (Fig. 1)

4 ♂♂, 1 ♀, Mt. Yuwan-dake, Am. (16-17. vii. 1963, K).

2a. *Metopodontus dissimilis dissimilis* (Boileau, 1898)

1 ♀, Fukumoto, Am. (26. viii. 1960, F); 2 ♂♂, 3 ♀♀, Mt. Yuwan-dake, Am. (16-17. vii. 1963, K); 1 ♂, 2 ♀♀, do. (17. vii. 1963, Ya); 1 ♀, do. (6. viii. 1963, Ok); 1 ♂, Nase, Am. (4. viii. 1963, Ok).

1 ♂, ?, Tok. (3. viii. 1960, Og); 1 ♂, 1 ♀, Isen, Tok. (8-10. vii. 1961, M); 1 ♂, 2 ♀♀, Mikyô, Tok. (25-26. vii. 1963, K).

2b. *Metopodontus dissimilis okinawanus* Nomura, 1962 オキナワノコギリクワガタ

2 ♂♂, 3 ♀♀, Mt. Oyama, Oki. (2-5. viii. 1958, U); 2 ♂♂, 1 ♀, do. (28-30. vii. 1963, Yo)

This subspecies was originally described from Okinawa. The specimens brought from Okinoerabu-jima stand far more closely by the form of Okinawa than by the nominate form of Amami-Oshima and Tokunoshima. This is an important fact for the zoogeographical survey on the fauna of the Loo-choo Archipelago.

3. *Rhaetulus crenatus recticornis* subsp. nov. シカクワガタ (Fig. 2)

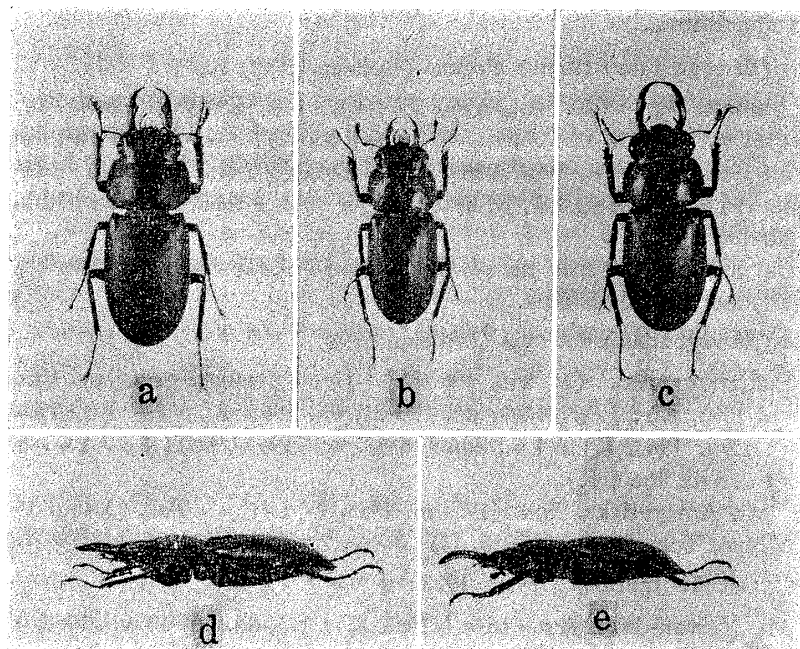


Fig. 2. *Rhaetulus crenatus* Westwood. a: subsp. *recticornis* Y. Kurosawa, ♂ (paratype); b: do. ♂ (holotype); c: subsp. *crenatus* Westwood, ♂ (same-sized male with paratype) (Formosa); d: lateral aspect of "a"; e: lateral aspect of "c".

Male: Different from the male of the nominate *crenatus* Westwood known from Formosa in the following points: 1. Mandibles rather straight and horizontal in lateral aspect, without large inferior dentation just behind the apex; 2. Elytral sculpture rather finer and denser.

Length: 20.5–25.0 mm. (without mandibles), 23.0–29.0 mm. (with mandibles); width: 7.5–9.2 mm.

Holotype: ♂, Mikyô, Tok. (25. vii. 1963, K).

Paratype: ♂, Mt. Yuwan-dake, Am. (17. vi. 1963, S). (Coll. Entomological Laboratory, Tokyo Agricultural University).

The holotype was captured by the author walking on a trunk of *Mallotus japonicus* Muell-Arg. beside the road.

The female of this race is still unknown to the author, but a female illustrated by R. Didier and Seguy as *R. crenatus* from the same locality (Cat. Ill. Lucan. Globe, Atlas, Pl. XXVI, f. 4, 1952) is surely presumed to be a female of this race. S. Nomura regarded this figure as showing a female of *Pseudorhaetus sinicus* Boileau and recorded this species from Amami-Oshima (Toho-Gakuho, 10, p. 41, 1960). However, this was based upon his misidentification.

Though *R. crenatus* has not yet been known from any locality other than Formosa, a moderate-sized male captured in Korea (Seitosan, 10. vii. 1944, K. Tsuneki lgt.), which is identical with the nominate race of Formosa, is preserved in the National Science Museum, Tokyo. *R. crenatus* may be a race of *R. speciosus* known from

Indochina and Burma.

4. *Dorcus (Serrognathus) titanus elegans* (Boileau, 1899) ヒラタクワガタ

1 ♀, Yamato, Am. (29. viii. 1960, F); 1 ♂, 1 ♀, Kawauchi-gawa, nr. Yuwan, Am. (15. vii. 1963, K); 1 ♂, do. (31. vii. 1963, K); 1 ♀, Mt. Yuwan-dake, Am. (6. viii. 1963, Ok). 1 ♀, Mt. Amagi-dake, Tok. (19. viii. 1958, U); 1 ♂, ?, Tok. (3. viii. 1960, Og); 1 ♂, 1 ♀, Mikyô, Tok. (25. vii. 1963, K); 1 ♂, Itokina, Tok. (28. vii. 1963, K).

The elytral costae of the specimens brought from Tokunoshima are somewhat weaker than those from Amami-Oshima.

5. *Dorcus (Serrognathus) costatus* (Boileau, 1898) スジプトヒラタクワガタ

1 ♀, Fukumoto, Am. (26. viii. 1960, F); 1 ♂, Kawauchi-gawa, nr. Yuwan, Am. (15. vii. 1963, K); 5 ♂♂, 4 ♀♀, do. (30-31. vii. 1963, K); 1 ♀, Mt. Yuwan-dake, Am. (17. vii. 1963, K); 1 ♀, do. (16-18. vii. 1963, Yo); 1 ♂, 1 ♀, Shinmura, Am. (1-2. viii. 1963, K).

2 ♂♂, Mt. Amagi-dake, Tok. (19. viii. 1958, U); 1 ♂, ?, Tok. (3. viii. 1960, Og); 1 ♀, Mikyô, Tok. (21. viii. 1958, U); 3 ♂♂, 2 ♀♀, do. (25-26. vii. 1963, K).

6. *Aegus laevicollis taurulus* Didier, 1928 ネプトクワガタ

1 ♂, Mt. Yuwan-dake, Am. (16. vii. 1963, K); 1 ♀, do. (16-18. vii. 1963, Yo); 1 ♀, do. (17. vii. 1963, I). 2 ♀♀, Mt. Ohyama, Oki. (2-5. viii. 1958, U).

7. *Neolucanus saundersi* Parry, 1864 タテヅノマルバネクワガタ (Fig. 3)

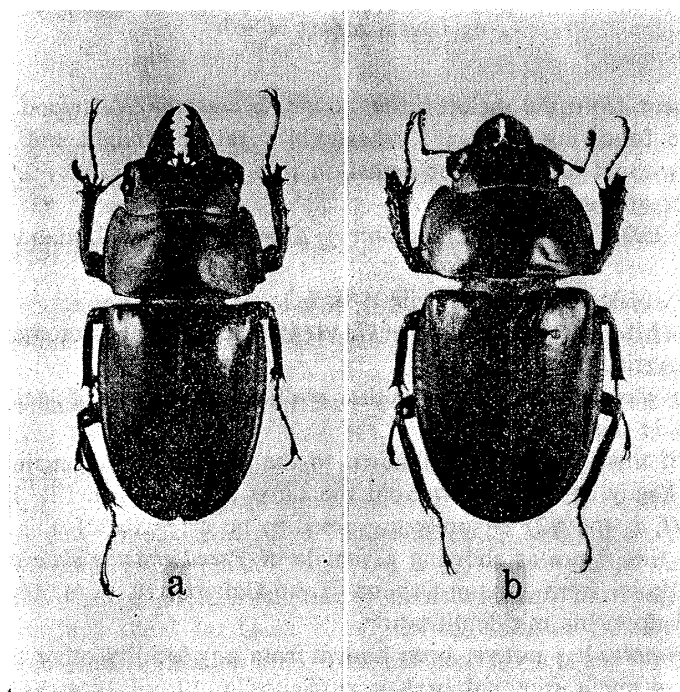


Fig. 3. *Neolucanus saundersi* Hope from Amami-Oshima.

a: ♂, b: ♀.

1♂, Nishikata-son, Am. (25. ix. 1937, Y. Maki); 2♀♀, Mt. Yuwan-dake, Am. (29. ix. 1937, Y. Maki).

The materials from Amami-Oshima have a slight difference from those from the Yaeyama group of the Loo-choos and Formosa, but there is no essential difference between them to separate them into different subspecies.

Arrow treated this species as a form of *N. baladeva* Hope (Faun. Brit. India, Lucanidae, p. 207, 1950). The species of these two types inhabit Formosa, but the nominate *baladeva* has not yet been found in the Loo-choos.

Besides these 7 species mentioned above, *Nigidius lewisi* Boileau, which spreads over Okinawa to the Tokara Islands and Sata-Cape of S. Kyushu, was originally described from Amami-Oshima. Mr. Shizumu Nomura once informed the author that he examined a specimen of *Nipponodorcus rubrofemoratus* S. v. Vollenhoven captured in Amami-Oshima.

摘 要

J. L. Gressitt, 平嶋義宏, 井上寛, 伊藤修四郎, 加納六郎, 岡田豊日, 山崎柄根, 矢野宏二, 安松京三, C. M. Yoshimoto 等諸氏及び筆者よりなる 1963 年度日米科学協力研究による奄美諸島調査隊の採集品を基に, これに上野俊一博士 1958 年, 藤山家徳氏 1960 年, 緒方良弘氏 1960 年, 義宮殿下 1961 年, 篠永哲氏 1963 年の各採集品及び白水隆博士より研究のため恵与された標本を加えて, 現在筆者の手許にある奄美諸島産クワガタムシ科甲虫 7 種の目録を作製した. この中, アマミヤマクワガタ *Lucanus ferriei* Planet は原記載以後初最の記録で, 最初の写真である. 原色日本昆虫図鑑上 (保育社) 第 26 図版 571 図にこの名の下に図示されているのは, 疑いもなく, ミヤマクワガタ北海道型 *Lucanus maculifemoratus elegans* Planet と思われるもので, 真のアマミヤマクワガタ (= オキナワミヤマクワガタ) ではない. シカクワガタ *Rhaetulus crenatus* Westwood は既に R. Didier により奄美大島産雌が図示されているが, 今回雄が始めて採集され, 台湾産の原型とは著しい相異が見られるので新亜種名を与えて記載した. 野村鎮氏が奄美大島より記録したゾウテルシカクワガタ *Pseudorhaetus sinicus* Boileau は Didier の雌の図に基くもので, 明かにこの新亜種と同一物であり, *Pseudorhaetus sinicus* は当然奄美諸島のフェウナより除かれねばならない. 又野村鎮氏が原色昆虫大図鑑 II (北隆館) 104 頁に記録したドロマルバネクワガタ *Calcodes saundersi* Parry は白水隆博士採集となつているが, これは誤で正確なデータは上記の通りである. なおドロマルバネクワガタは *Neolucanus baladeva* Hope に当てるべきで, *N. saundersi* にはタテヅノマルバネクワガタを当てるべきと考える.