

STUDIES ON THE LYGAEIDAE. XVIII
A new genus of the subfamily Blissinae from Japan*
(Heteroptera)

By Terunobu Hidaka

Entomological Laboratory, Faculty of Agriculture, Kyushu University

Geoblissus gen. nov.

Body somewhat oval, with long hairs; head very small; seen from above, frons visible and prominently sloping towards apex of head which is wider than long; eyes large and produced outwardly; ocelli nearer to eyes than the distance between ocelli. Pronotum sparsely punctured, with straight hairs; anterior margin of pronotum sinuate backwardly, posterior margin of pronotum straight but postero-lateral margins rounded and as broad as antero-lateral margins; posterior two-thirds of the lateral margins of pronotum slightly incised, and a median part of pronotum transversely impressed. Scutellum wider than long, with the apex acutely pointed and the lateral margins slightly sinuate outwardly, posterior one third concave. Costal margin of fore wings incised, apical margin cut off at the apex of the claval suture. Legs with long hairs, fore femora swollen, fore tibiae slightly curved inwardly and with thorn-like spines at the apical margins, posterior segments of tarsi longer than the anterior ones. Abdomen with irregular wrinkles and long hairs, abdomen shorter than head and thorax combined together, one third of the posterior margin of the fifth abdominal tergite produced posteriorly but one third of it truncated and fourth tergite slightly produced posteriorly but linearly truncated, posterior margin of the second tergite very slightly incised throughout its width.

Type species: *Geoblissus rotundatus* sp. nov.

This new genus distinctly different from the genus *Blissus* Klug in the following characters: Antennae shorter than pronotum, first antennal segment subequal to the length of third, the second the longest and longer than the fourth; anterior one third of pronotum incised

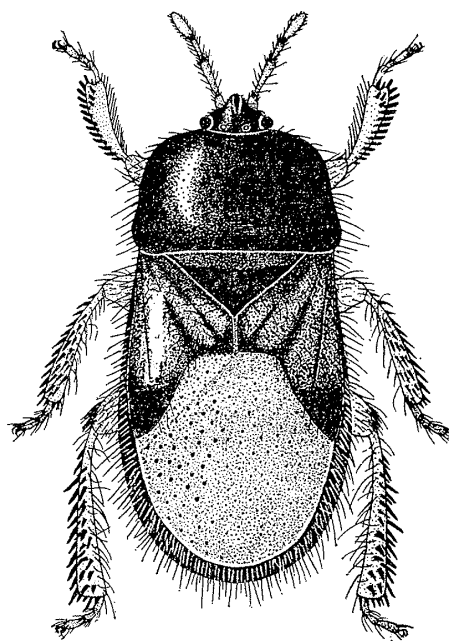


Fig. 1. *Geoblissus rotundatus* sp. nov.

* Contribution Ser. 2, No. 44, Entomological Laboratory, Kyushu University.

acutely, and moreover frons continuously sloping from the anterior part of pronotum; fore tibiae thickened towards the apex and outer margins with thorn-like spines; middle and hind tibiae with close spines; mesosternum conspicuously swollen and with a longitudinal ridge at the median part, third abdominal tergite the narrowest; the second tergite rounded forwardly; median part of the anterior margin of first abdominal tergite prominently produced.

***Geoblissus rotundatus* sp. nov. (Figs. 1-3)**

Body blackish brown with golden hairs; central lobe of head, eyes and ocelli reddish brown; antennal segments, rostrum, anterior parts of coxae, trochanters,

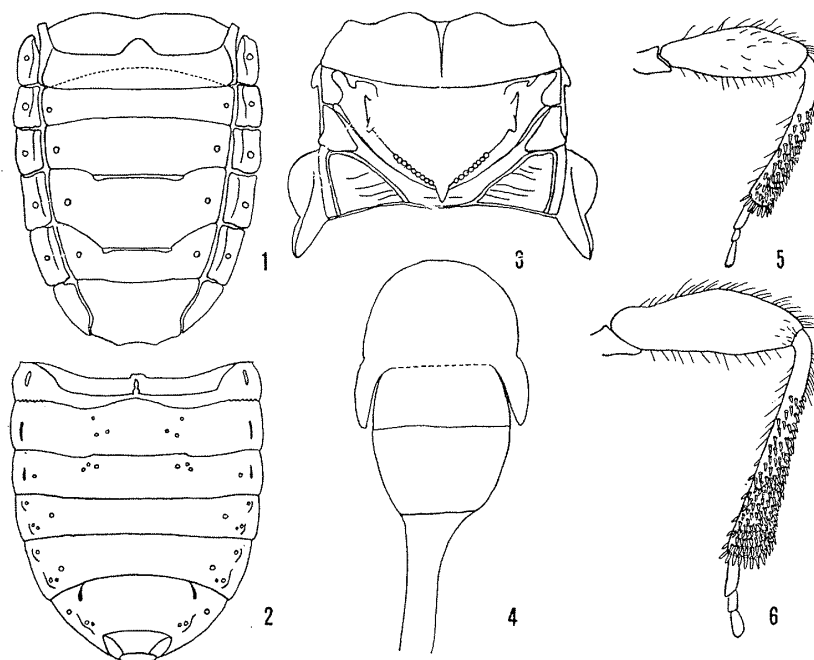


Fig. 2. 1. abdominal tergites; 2. abdominal sternites; 3. meso- and metathorax in dorsal view; 4. spermatheca; 5 and 6. middle and hind legs.

tarsi, and the opening of scent glands yellowish brown or light brown; clavus and corium light yellow; membrane semi-transparent; posterior half and the anterior one fifth of clavus and the anterior part of claval suture blackish yellow; all pleura and sterna, and basal half of scutellum dull black, but mesosternum brownish black and shining.

Length of body: male 4 mm; female 5 mm.

Distribution: Japan (Honshu).

Holotype male, Wakayama city, Wakayama Pref., Honshu, 20. III. 1952 (S. Goto leg).

Allotype female, Niigata Pref., Honshu, 5. V. 1936 (K. Baba leg).

Paratypes, four males, Wakayama city, Wakayama Pref., 20. III. 1952 (S. Go-

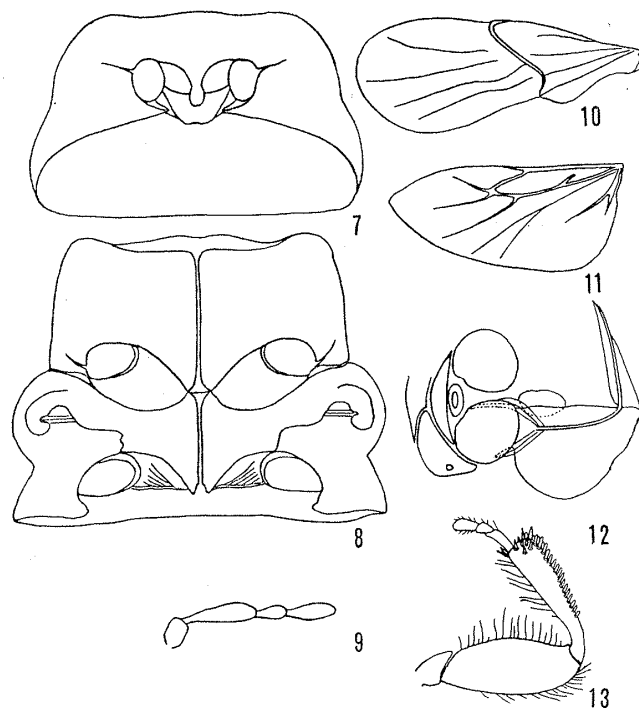


Fig. 3. 7. prothorax in ventral view; 8. meso- and metathorax in ventral view; 9. antenna; 10 and 11. fore and hind wings; 12. ovipositor and reproductive segments; 13. fore leg.

to leg.) and one male, Niigata Pref., 5. V. 1936 (K. Baba leg.).

All the types are preserved in the collection of the Entomological Laboratory, Kyushu University, Fukuoka.

Acknowledgments

The author wishes to express his hearty thanks to Profs. K. Yasumatsu and S. Miyamoto of Kyushu University for their help in the course of the present study, and to Dr. K. Baba of Niigata Pref. and Mr. S. Goto of Wakayama Pref. for their gift of these materials.

Pachybrachius nietneri (Dohrn) (Lygaeidae) の分布

日 高 輝 展

本種はセイロン、ビルマ及び台湾からそれぞれ知られていたが、筆者は次の諸地方の標本を検査することができた。ここに報告しておく。

沖縄島, 4 ♀ 6 ニンフ, 25. VIII. 1955 (S. Oshiro).

屋久島, 1 ♀, 29. VII. 1929 (H. Hori).

大泊 (鹿児島県佐多町), 3 ♀, 29. VIII. 1951 (S. Miyamoto).