

Kontyû, 35 (1) : 22-24. 1967

A NEW SPECIES OF THE GENUS *HETEROGENELLA*
FROM KYUSHU, JAPAN
(Diptera : Cecidomyiidae)¹

By Junichi Yukawa

Entomological Laboratory, Faculty of Agriculture, Kyushu University

The genus *Heterogenella* was erected by Mamajev (1963) based on three males collected from Kadnikovskaya, Vologda Province in USSR. As far as I know, only one species, *Heterogenella hybrida* Mamajev (1963), has been included in the genus, but in this paper another species which belongs to this genus will be added to the gall-midge fauna of Kyushu in Japan.

I wish to express my thanks to Prof. Keizô Yasumatsu and Prof. Yoshihiro Hirashima of the Entomological Laboratory, Kyushu University for their cordial guidance. Thanks are also due to Dr. B. M. Mamajev of the Academy of Science of the USSR for his suggestions on the genus.

The type specimen will be preserved in the collection of the Entomological Laboratory, Kyushu University, Fukuoka, Japan.

Genus *Heterogenella* Mamajev

Heterogenella Mamajev, Rev. Ent. USSR, 42 (2) : 440, 1963

This genus resembles genus *Skuhraviana* Mamajev (1963) with respect to wing and male genitalia, but differs from it by having flagellar segment with more slender basal enlargement, basal enlargement with one or two complete crenulate whorls of long bristles and three or two incomplete ones. Eye bridge three to four facets wide, palpi consist of three to four segments. Antennae with 2+12 segments in the male. Legs clothed with scales, empodia rather narrow, a little shorter than claws. Costa extending nearly at tip of M_{1+2} , R_1 over two times as long as R_s , Cubital fork distinct, forming acute angle, sensory pores three on R_1 , one on r-m, one on junction of R_s and r-m. Male genitalia with basiclaspers deeply incised ventrally, upper wall of subanal cavity with one or two pairs of lobes, the lobes clothed with minute spines directed downward, so that from dorsal view it seems that the tegmen has one or two pairs of bunches of minute spines on both sides.

Heterogenella mamajevi Yukawa sp. nov.

Male: Moderate size midge, body length about 1.8 mm. Eyes black, eye bridge four facets wide. Palpi consist of four segments with hairs, with rather long narrow scales, first segment subglobular, second suboval, third about 1.2 times as long as fourth. Antennae brown with 2+12 segments, pedicel subglobular, a little

1) Contribution Ser. 2, No. 256, Entomological Laboratory, Kyushu University.

smaller than scape, first flagellar segment elongate about 1.3 times as long as second, terminal segment with three minute apical spines, three complete whorls and one incomplete whorl of bristles, remainder of the flagellar segments flask-shaped with stem about half as long as basal enlargement, first to seventh flagellar segments with one complete and three incomplete crenulate whorls of long bristles on the basal enlargement, eighth to eleventh segments with two complete and two incomplete whorls, first seven flagellar segments also with two or three rather long, simple sensorial spines on one side and one long, bifurcated sensoria on the other side, other flagellar segments with some simple sensorial spines but without bifurcated spines. Thorax brown on dorsum, brown on sides. Legs brown to greyish brown, tarsi with rather narrow scales, claws bent at right angle with two minute spines before distal enlargement, empodia rather narrow, a little shorter than claws. Wings about 1.5 mm, semitransparent, about 1.8 times as long as wide, Costa extending over half distance between tip of R_5 and M_{1+2} , Sc rudimentary, R_1 about 2.2 times as long as R_s , three sensory pores on R_1 , one on r-m, one on junction of R_s and r-m, M_{1+2} distinct, Cubital fork forming acute angle. Abdomen light brown. Genitalia: ninth tergite rather narrow semicircular in shape with dorsal setae, cerci lobed caudo-laterally, disticlasps without any distal spines, not widened apically, basiclasps deeply incised ventrally and bearing a triangular lobe on the inner side which is densely haired, upper wall of subanal cavity with two pairs of lobes, these lobes clothed with minute spines directed downward, tegmen nearly membranous, only distal part of genital rod visible.

Female: unknown.

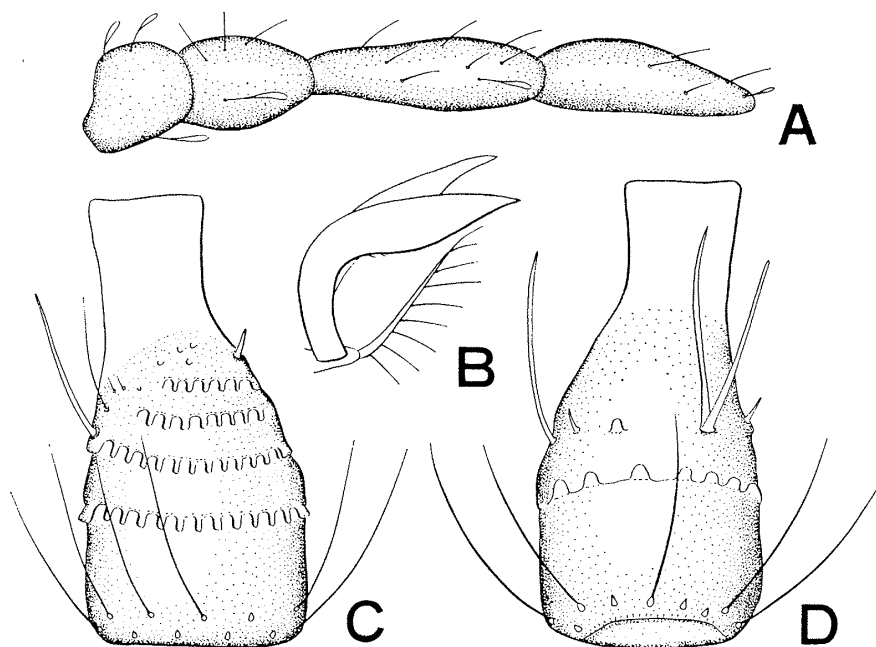


Fig. 1. A. palp, B. claw and empodium, C-D. fifth flagellar segment.

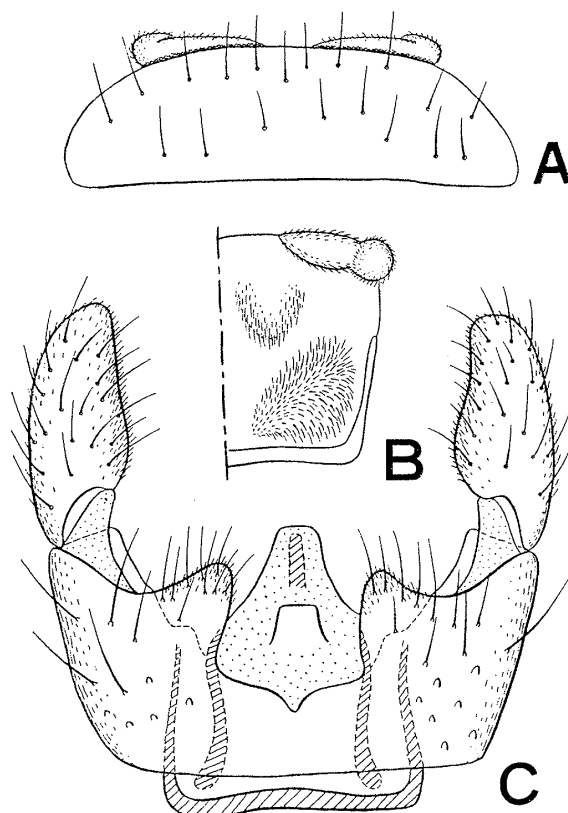


Fig. 2. A. ninth tergite and cerci, B. upper wall of subanal cavity, C. ventral view of male genitalia.

Holotype: Male (on slide), Mt. Inunaki, Fukuoka-Pref., Kyushu, Japan, 3. VI. 1965, leg. J. Yukawa, Cecid. No. 140-1.

This species is distinguished from *Heterogenella hybrida* Mamajev (1963) by the following points: Eye bridge four facets wide, palpi consist of four segments, disticlasps apically not as widened as in *H. hybrida*, upper wall of subanal cavity with two pairs of lobes clothed by minute spines, first to seventh flagellar segments with only one bifurcated sensoria.

Literature Cited

Mamajev, B. M. 1963. Rev. Ent. USSR, 42 (2): 437-454.