

Jpn. J. Ent., **62** (2): 252–254. June 25, 1994

The Male of *Ohananomia yagii* TÔYAMA, 1987 (Coleoptera, Rhipiphoridae)

Masao TÔYAMA

PO Box 4, Chino, Nagano, 391 Japan

and

Nobuo OHBAYASHI

College of Agriculture, Ehime University,
Tarumi 3-chome, Matsuyama, 790 Japan

Abstract The male of *Ohananomia yagii* TÔYAMA, 1987, is described. This is the first record of a male in the rhipiphorid genus *Ohananomia* TÔYAMA, 1986.

Key words: Rhipiphoridae; *Ohananomia*; Yonaguni Island.

Ohananomia yagii TÔYAMA, 1987 was described by the senior author based on two females collected on Yonaguni-jima Is., the Ryukyus, Japan, as the second species of the genus. In his collecting trip made in 1989, the junior author collected a male specimen of a rhipiphoridae on this island. After a careful examination, it is concluded that this specimen is a male of *Ohananomia yagii*. As there are so many differences between male and female, it seems worth describing male characteristics.

Before going further, we wish to express our sincere gratitude to Dr. Shun-Ichi UÉNO of the National Science Museum (Nat. Hist.), Tokyo, for his critical reading of the manuscript.

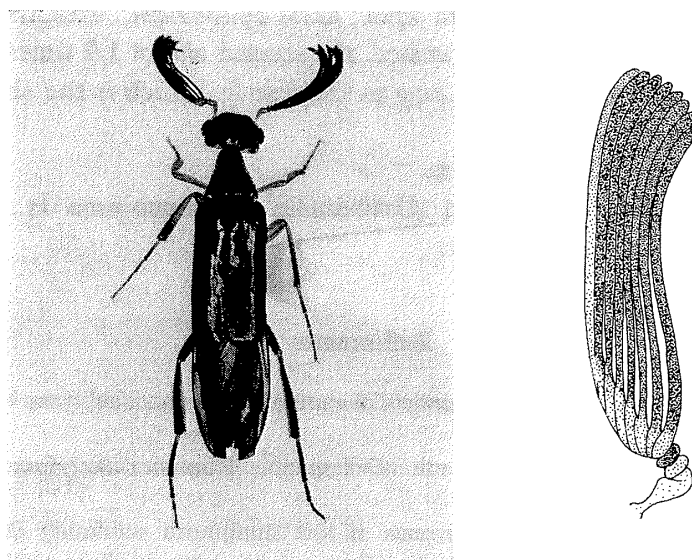
Ohananomia yagii TÔYAMA, 1987

(Figs. 1–2)

Ohananomia yagii TÔYAMA, 1987, *Elytra, Tokyo*, **15**: 33–35.

Male. Body elongate, subparallel-sided; head testaceous except for blackish frons; pronotum black on disc, testaceous along the sides; scutellum, elytra and abdomen entirely black and lustrous; prosternum testaceous; mesosternum, metasternum and abdomen entirely black; antennae testaceous though the third segment and appendages of the fourth to tenth are blackish; anterior and middle legs testaceous; posterior legs black except for basal parts of tibiae and each tarsal segment which are testaceous.

Head strongly convex above, distinctly bisinuate at base in dorsal aspect; disc



Figs. 1-2. Male of *Ohananomia yagii* TÔYAMA. — 1, dorsal view; 2, left antenna.

densely and evenly punctate except for a pair of small callosities located a short way from antennal insertions, evenly clothed with fine erect hairs; clypeus transverse with the anterior margin subtruncate; occiput roundly produced posteriorly beyond the apex of pronotum; temples roundly but strongly constricted some distance behind eyes; eye moderately faceted, incised for one-fifth the diameter by internal emargination and subdivided into a smaller upper and a larger lower lobes; antennal insertions small and simple; antennae eleven-segmented, with the first distinctly curved and expanded apically, about 3.0 times as long as the following two united, the second and the third very short, globular, the fourth to the last segments very strongly uniflabellate.

Pronotum distinctly narrower than elytra at base, distinctly narrowed anteriorly, slightly constricted near the anterior third; basal margin about 2.0 times as wide as the anterior, weakly bisinuate, with the median lobe very broad and truncate; sides indistinctly ridged in the portion from posterior angles to basal fifth; disc slightly convex, obsolete depressed in middle, transversely grooved along base, evenly and finely punctate, and evenly clothed with blackish suberect hairs. Scutellum arcuately rounded at apex, slightly but distinctly depressed in middle.

Elytra short, reaching the middle of the second abdominal segment, about 2.6 times as long as pronotum, subparallel-sided, separately rounded at the tips, and weakly depressed at bases; surface very finely punctate and clothed with subrecumbent black hairs.

Prosternum with the anterior margin roundly emarginate; prosternal process very narrowly ridged between anterior coxae. Mesosternum convex. Metasternum evenly convex, without median groove. Abdomen with the last sternite roundly emarginate at apex. Legs slender; anterior and middle tibiae without spur at apices;

posterior tibiae with a spur at each apex; tarsi cylindrical, with the first segment about as long as the following two united, the second about 1.2 times as long as the third, and the third about twice as long as the fourth, which is the shortest. Claws simply cleft, distinctly pectinate.

Length: 6.5 mm; width: 1.0 mm.

Specimen examined. 1 ♂, Mt. Urabedake, Yonagunijima Is., Ryukyus, Japan, 19. V. 1989, N. OHBAYASHI lgt.

References

- TÔYAMA, M., 1986. A new rhipiphorid beetle (Coleoptera, Rhipiphoridae) from Malaysia. *Elytra, Tokyo*, **14**: 43–45.
 ——— 1987. A new rhipiphorid beetle (Coleoptera, Rhipiphoridae) from Japan. *Elytra, Tokyo*, **15**: 33–35.
 ——— & T. HATAYAMA, 1985. Occurrence of the rhipiphorid subfamily Hemirhipidiinae in Japan and Taiwan (Coleoptera, Rhipiphoridae). *Gekkan-Mushi, Tokyo*, (176): 18–24.

(Received December 23, 1993; Accepted January 7, 1994)

「衛生動物」総目次の刊行

日本衛生動物学会では、創立 50 周年を記念して「衛生動物, Japanese Journal of Sanitary Zoology」のデータベース化を行ない、第 1 巻から 43 巻までの総目次を作製いたしました。論文欧文索引、同種名索引、巻号別和文索引、動物類別事項別索引からなり、364 ページです。

1 部 2,000 円 (送料込) で入手できます。下記に連絡下さい。

〒930-01 富山市杉谷 2630 富山医科薬科大学寄生虫学教室内

50 周年記念事業実行委員会第 3 部会