

Durability of Adhesion between 4-META/MMA-TBB Resin and Cementum

Yuko TANAKA, Tsutomu SUGAYA and Masamitsu KAWANAMI

Periodontology & Endodontology, Department of Oral Health Science, Hokkaido University Graduate School of Dental Medicine, Kita 13 Nishi 7, Kita-ku, Sapporo, 060-8586, Japan

Corresponding author, E-mail: yuuko@den.hokudai.ac.jp

Received April 7, 2004/Accepted May 7, 2004

4-META/MMA-TBB resin has shown good biocompatibility and remarkable adhesion to dentin. It seems to be suitable for use in periodontal tissues for retrograde root sealing and treatment of vertically fractured roots. For an adhesive resin to be useful clinically, it must bond not only to the dentin but also to the cementum.

The purpose of this study was to evaluate the long-term adhesion durability of 4-META/MMA-TBB resin to cementum kept in water at 37°C. Bovine root cementum and dentin surfaces were treated with 10-3 solution before 4-META/MMA-TBB resin was applied on treated surfaces. The micro-tensile bond strength (μ TBS) decreased during the first two months; dye leakage value increased during the first four months and stabilized thereafter. No significant differences in adhesion durability were recognized between the dentin and cementum.

Key words : Adhesion, Durability, 4-META/MMA-TBB resin

INTRODUCTION

A number of retrograde filling materials have been tested for sealing the root canal. These materials include amalgam, reinforced zinc oxide-eugenol cement, and glass-ionomer cement. Clinical results in using amalgam is reported to have a 58.7-86.4% success rate¹⁻⁶⁾, while that of Super-EBATM is 65.4-86.4%^{1,3,6)}. Chem-Fil^{® 4)} is reported to have an 87.8% success rate.

These clinical results are affected by many factors such as preoperative and operative conditions and methods. As to why they do not achieve good healing, one suggested reason is that the sealing capacity of the retrograde filling materials is insufficient. After using amalgam, reinforced zinc-oxide eugenol cement, and glass-ionomer cement for root-end filling, *in vitro* studies on dye leakage were carried out. It was found that, if it were over a long duration, application of these materials did not completely inhibit dye leakage⁷⁻¹⁴⁾.

Various *in vitro* studies have reported that good apical sealing was achieved by resin¹⁵⁻¹⁷⁾. Vignaroli *et al.*¹⁷⁾ reported that applying bonding agents to the resected root-ends led to good apical sealing because of sealing of both the root canal and dentinal tubules. Not much research has been devoted to evaluating the clinical results of the use of adhesive resin for root-end sealing after apicoectomy. Only Rud *et al.* reported good results using Gluma and Retroplast^{TM 18-21)}. However, glutaraldehyde is included in Gluma, so there is concern about the possibility of harmful effects on the human body. Furthermore, contamination with blood of the resection surface during the application procedure causes

inferior bonding and a risk of resin loosening. Resin is known to be sensitive to moisture during application. Therefore poor clinical results will arise when hemostasis is difficult to achieve intraoperatively, especially when failures in conjunction with poor hemostatic control during treatment have been evident¹⁸⁾.

4-META/MMA-TBB resin has been widely used in orthopedic and prosthetic dentistry. It has shown remarkable adhesive properties to dentin *in vitro* and *in vivo*²²⁻²⁴⁾. Other favorable properties include little cytotoxicity, high level polymerization under wet conditions, and high biocompatibility after complete curing²⁵⁻²⁷⁾. It was biocompatible and the sealing ability unaffected by contamination with blood for about five seconds after application²⁷⁾. So it seems to be also suitable for use in periodontal tissues. Thus it has been used for retrograde root sealing following apicoectomy or intentional replantation^{28,29)}, as well as the bonding treatment of vertically fractured roots³⁰⁻³²⁾.

Clinical studies have suggested that 4-META/MMA-TBB resin might seal vertically fractured roots and prevent re-fractures in the bonding treatment³⁰⁻³²⁾. It was reported that 4-META/MMA-TBB resin used as a root-end sealant following apicoectomy and intentional replantation induced a good prognosis at six months after surgery^{28,29)}. But an essential factor has not been looked into: the long-term adhesion between cementum and 4-META/MMA-TBB resin.

To be a suitable material in the bonding treatments of vertically fractured roots and root-end sealing, the adhesive resin must bond not only to dentin but also to cementum. Furthermore there should be

minimal leakage between the bonding material and the cementum, and the dentin as well. However, it has been demonstrated that the adhesive property of 4-META/MMA-TBB resin decreases when kept in water for long periods²³. Not much research has been done to clarify the long-term stability of its adhesive bond strength and sealing property in the water.

The purpose of this study was to evaluate the adhesion durability of 4-META/MMA-TBB resin to cementum and dentin by employing the micro-tensile bond strength (μ TBS) test and the dye leakage test using bovine teeth.

MATERIALS AND METHODS

Adhesive and bonding procedures

Ninety-six extracted bovine incisors were used in this study. Forty-eight teeth were used for the micro-tensile bond strength test, the rest used for the dye leakage test. After soft tissue and debris were removed from the tooth surface with a curette type scaler, the crowns were cut off at the cement-enamel junction with a low-speed diamond saw (Isomet, Buehler Ltd., Lake Bluff, IL, USA). Then the root pulp was extirpated with a barbed broach. Dentin specimens were obtained by removing cementum.

10-3 solution (activator Green[®], SunMedical Co. Ltd., Shiga, Japan) was applied to the surface of the cementum with a Benda[®] Brush (Centrix, Shelton, CT, USA) for 5 seconds. The dentin surface was also treated with the same 10-3 solution for 5 seconds. Then 4-META/MMA-TBB resin (Super Bond C&B[®], clear type, SunMedical Co. Ltd., Shiga, Japan) was applied on the treated surfaces according to the manufacturer's instructions using a brush dip technique. The diameter of the resin was approximately 3 mm. Three resin-dentin or resin-cementum bonded specimens were obtained per tooth. After resin dipping, all specimens were stored at 37°C for 1 day, 1, 2, 3, 4 or 6 months. All samples were preserved in a solution of 10% Penicillin-Streptomycin (GIBCO[™], Grand Island, NY, USA) and 10% AMPHOTERICIN B (Cellgro[®], Herndon, VA, USA). The solution was changed once a week to prevent bacterial growth.

Micro-tensile bond testing

The specimens were sectioned perpendicular to the adhesive interface with a low-speed diamond saw under a water coolant. The sectioned specimens were carefully trimmed into an hourglass shape using a high-speed super-fine diamond point (SF 1104R, Shofu Co. Ltd., Kyoto, Japan) to form a gentle curve along the bonded interface from both sides to about 1.0 mm, thus resulting in an interface area of approximately 1 mm². These specimens were then attached to a testing apparatus with a cyanoacrylate

adhesive (Model Repair II Pink, Dentsply-Sankin Industry Co. Ltd., Ohtawara, Japan) and subjected to micro-tensile bond testing³³⁻⁴⁰ in a tabletop material tester (EZ Test, Shimazu Co., Kyoto, Japan) with a cross-head speed of 1.0 mm/min.

The μ TBS values were expressed in MPa, and derived from dividing the imposed force (N) at the time fractured by the bond area (mm²). When specimens failed before the actual testing, μ TBS was determined from specimens that had survived the specimen processing with an explicit note of the number of pre-testing failures.

The bond strength data were analyzed by Mann-Whitney U test at 5% level of significance.

Fractographic analysis

After the micro-tensile bond testing was completed, all fractured surfaces were observed by a light microscope (OLYMPUS BX50, Olympus Ltd., Tokyo, Japan). Failure modes of resin-dentin and resin-cementum bonds were categorized into four types: cohesive failure of resin (R), cohesive failure of tooth (T), adhesive failure (A), and mixed failure (M). Fractographic analyses were statistically analyzed by the χ^2 test.

Dye leakage assessment

The specimens were transferred from the storage water into a 0.5% basic fuchsin solution and kept at room temperature for 24 hours. After being rinsed with water and air-dried, a section was made at the center of the material perpendicular to the bonding interface. The length of dye penetration and that of the interface between resin and tooth were measured with a measuring ocular in the light microscope. The maximum length was recorded for each specimen.

The leakage value was calculated as follows:

$$(\text{length ratio: \%}) = (\text{dye penetration length} / \text{interface length}) \times 100$$

The leakage values were then analyzed by Mann-Whitney U test at 5% level of significance.

RESULTS

For dentin, μ TBS decreased significantly from 28.4 MPa to 17.1 MPa in the first month ($p < 0.05$), then remained stable at about 16 to 18 MPa from the first month to the sixth month. For cementum, μ TBS decreased significantly from 32.9 MPa to 18.0 MPa over the first two months ($p < 0.05$), then remained stable at about 18 to 20 MPa from month 2 to month 6. The μ TBS differences between dentin and cementum were statistically significant ($p < 0.05$) only at the first month, and no statistically significant differences were observed between month 2 and month 6 (Fig. 1).

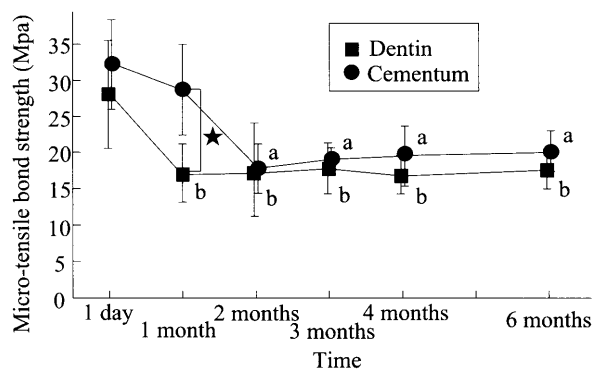


Fig. 1 Micro-tensile bond strength (mean \pm standard deviation) to dentin and cementum by period after bonding. a and b indicates significant differences between day 1 and each time points in dentin and cementum ($p < 0.05$). A star indicates a significant difference between dentin and cementum at one time point.

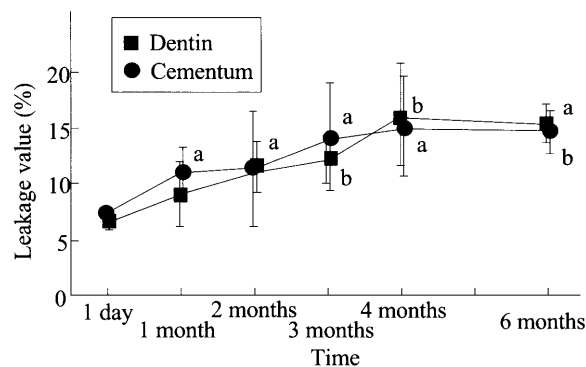
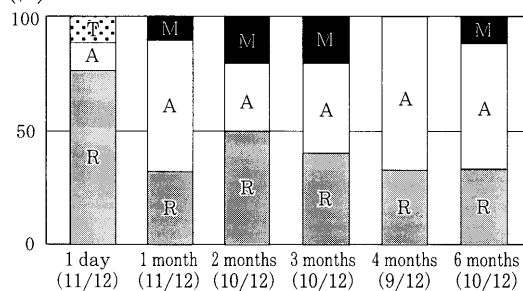


Fig. 3 Dye leakage value (mean \pm standard deviation) of dentin and cementum by period after bonding. a and b indicates significant differences between day 1 and each time points in dentin and cementum.

(a) Fracture modes of cementum specimens (%)



(b) Fracture modes of dentin specimens (%)

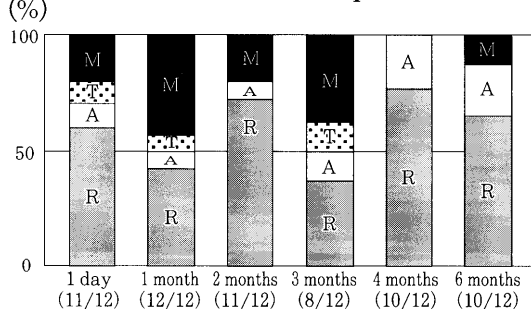


Fig. 2 Percentages of fracture modes of de-bonded surface. Within parentheses are the number of specimens that survived the preparation process per total number of specimens. (a) fracture modes of dentin specimens. (b) fracture modes of cementum specimens.

According to fractographical analysis, the proportion of interfacial failure of the dentin sample tended to increase from 12.5% on the first day to 55.6% at sixth month. In the cementum sample, the destruction zone was not specified. No statistically significant differences were observed among all the fracture types (Fig. 2).

The leakage value of dentin increased significantly from 5.65% to 12.6% in the first three months ($p < 0.05$); while for cementum, the leakage value increased significantly from 5.69% to 11.4% within the first month. For both dentin and cementum, no significant differences could be recognized at months 3, 4, and 6. The leakage values at sixth month for both dentin and cementum were almost the same (Fig. 3).

DISCUSSION

After day 1 in the micro-tensile bond strength test, the adhesive bond strengths of both dentin and cementum began to decrease. By the end of the first month, the adhesive bond strength of dentin had decreased by about 50%; for cementum, the strength decreased by about 50% at the second month. Following which there were no significant differences, and μ TBS was maintained until the end of the six-month period. In the work of Kiyomura *et al.*²²⁾, it was reported that the tensile strength decreased from 19.5 MPa to 7.9 MPa by the third month after the dentin samples were immersed in water. Kiyomura *et al.*²²⁾ also reported that the samples' surfaces were treated with 10-3 solution for 30 seconds. It was recommended that 10-3 solution treatment be shorter than 30 seconds in order to expedite the generation of a long-term, stable hybrid layer. Therefore in this present study, treatment time with 10-3 solution was set at 5 seconds. The result was that the tensile bond strength to dentin decreased from 28.4 MPa to

17.6 MPa in three months. This result may lend support to the view that durable adhesive strength was achieved because the 5-second treatment time seemed to prevent over-etching of the dentin.

It was suggested that due to water immersion for long periods, failure occurred between the hybrid layer and the resin layer, or between the hybrid layer and the mineralized dentin²³⁾. In several studies, bond strength was reduced after resin-dentin bonded specimens were stored long-term in water^{22,41,42)}. It has been speculated that water absorbed into the demineralized dentin had caused hydrolytic degradation^{22,23,41,42)} of the resin, thus leading to non-enveloped collagen fibrils at demineralized dentin zone. Hence, the presence of demineralized dentin was thought to have affected the integrity of the resin-dentin bonds for both short and long periods⁴⁴⁾. Several studies concluded that a prolonged acid conditioning time resulted in fracture within the demineralized dentin zone when specimens were stressed to failure using the micro-tensile bond test^{43,44)}. This means that excessive acid conditioning caused deeper demineralization of both intertubular and peritubular dentin, which in turn meant that they were not capable of being completely infiltrated by resin monomers. These studies suggested that failure was likely to be initiated in this weakest zone, leading to decreased bond strength⁴⁵⁾. In this study, μ TBS decreased at the initial stage with no significant differences afterwards. The reason for this change is unclear, but Kiyomura *et al.* supported the view that bonding strength decreases gradually following the initial decline of adhesive strength²²⁾.

On fractographic analysis, singularity was not recognized in either the dentin sample or the cementum's. The degradation effect on adhesion due to long-period water immersion has not been established. But in dentin, it was recognized that the adhesive interface tended to degrade as time progressed. So demineralized dentin was deemed to be incapable of being completely infiltrated by resin monomers. It was reported that long-term morphological changes had occurred in both the adhesive interface and the resin-composite restorative materials^{46,47)}. In the present study, there were no significant differences between the adhesive and cohesive failure rates of resin. Hence, a dominant factor for failure was lacking. In cementum however, there tended to be a much higher rate of cohesive fracture, though the results were not statistically significant. Adhesive failure rate, on the other hand, seemed to be lower when cementum surfaces were treated with 10-3 solution for 5 seconds. The μ TBS of resin-cementum at first month was significantly higher than that of resin-dentin, and the rapidity of dentin's adhesive strength decline was clearly significant. Two reasons were suggested for the vast difference. First, owing to the greater density of cementum (due to the absence of

tubules), water can infiltrate the dentin more easily. Secondly, it could be that demineralized cementum was capable of being completely infiltrated by resin monomers.

The leakage values of dentin and cementum increased until the third month and then remained fairly constant until the sixth month. At sixth month, the leakage value was about 15% in the 3-mm-diameter specimens. In the dye leakage test, leakage is identified by the permeation of dye molecules in the gap between resin and dentin. The gap could be formed due to curing shrinkage of the resin or degeneration of the adhesive interface. It is known that polymerization continues for 4-META/MMA-TBB resin for about one month^{48,49)}. The continuance of polymerization expanded the contraction gap, hence the leakage quantity increased. However, the gap did not seem to expand during the last two months of the experiment — as indicated by the stabilized leakage values.

Through the micro-tensile and dye leakage tests, this study has shown that for both dentin-resin and cementum-resin bonds, the declining tendency of adhesive strength was not significant after the first 2-3 months. This means that it is highly likely that adhesion would remain strong and durable for a long term. Based on these test results, it seems promising that 4-META/MMA-TBB resin would be clinically effective for the bonding treatments of vertically fractured roots and root-end sealing following apicoectomy, in which bonding to cementum is necessary.

CONCLUSION

From the results of micro-tensile and dye leakage tests, it became clear that the adhesion between 4-META/MMA-TBB resin and dentin or cement decreased for 1-3 months, and then stabilized afterwards. During most of the observation periods, no significant differences were recognized between dentin and cementum.

ACKNOWLEDGEMENTS

This study was supported in part by grants from the Japan Society for Promotion of Science (Grant-in-Aid for Scientific Research, 13470401).

We sincerely appreciate Drs Saori Tanaka and Hiroshi Noguchi, Periodontology & Endodontology, Department of Oral Health Science, Hokkaido University Graduate School of Dental Medicine, for their invaluable technical assistance.

REFERENCES

- 1) Rapp EL, Brown CE, Newton CW. An analysis of success and failure of apicoectomies. *J Endod* 1991; 17:

- 508-512.
- 2) Frank AL, Glick DH, Patterson SS, Weine FS. Long-term evaluation of surgically placed amalgam fillings. *J Endod* 1992; 18: 391-398.
- 3) Pantschev A, Carlsson AP, Andersson L. Retrograde root filling with EBA cement or amalgam – A comparative clinical study. *Oral Surg Oral Med Oral Pathol Oral Radiol Endod* 1994; 78: 101-104.
- 4) Jesselen P, Zetterqvist L, Heimdahl A. Long-term results of amalgam versus glass ionomer cement as apical sealant after apicectomy. *Oral Surg Oral Med Oral Pathol Oral Radiol Endod* 1995; 79: 101-103.
- 5) August DS. Long-term postsurgical results on teeth with periapical radiolucencies. *J Endod* 1996; 22: 380-383.
- 6) Testori T, Capelli M, Milani S, Weinstein, RL. Success and failure in periradicular surgery – A longitudinal retrospective analysis. *Oral Surg Oral Med Oral Pathol Oral Radiol Endod* 1999; 87: 493-498.
- 7) McDonald NJ, Dumsha TC. A comparative retrofill leakage study utilizing a dentin bonding material. *J Endod* 1987; 13: 224-227.
- 8) Vertucci FJ, Beatty RG. Apical leakage association with retrofilling techniques – A dye study. *J Endod* 1986; 12: 331-336.
- 9) Smee G, Bolanos OR, Morse DR, Furst ML, Yesilsoy C. A comparative leakage study of P-30 resin bonded ceramic, Tefron, amalgam, and IRM as retrofilling seals. *J Endod* 1987; 13: 117-121.
- 10) Thirawat J, Edmunds DH. The sealing ability of materials used as retrograde root filling in endodontic surgery. *Int Endod J* 1989; 22: 295-298.
- 11) Fukunaga S, Shimada J, Iwata I, Yamada T, Tajima T, Yamamoto Y. Study on root canal closure with retrofilling materials in apicoectomy – Comparison and investigation by dye penetrating test using 2% fuchsin dye solution. *Jap J Oral Max Surg* 1994; 40: 1071-1075.
- 12) Hasegawa M, Tanaka S, Satake S, Yamada Y, Shimizu A, Yoshioka W. Sealing ability of glass ionomer type composite resin as retrofilling material. *Jpn J Conserv Dent* 1994; 37: 1241-1245.
- 13) Bohasali K, Pertot WJ, Hosseini B, Camps J. Sealing ability of Super-EBA and Dyract as root-end fillings – A study *in vitro*. *Int Endod J* 1998; 31: 338-342.
- 14) Aqrabawi J. Sealing ability of amalgam, Super-EBA cement, and MTA when used as retrograde filling materials. *Br Dent J* 2000; 188: 266-268.
- 15) Thirawat J, Edmunds DH. The sealing ability of materials used as retrograde root fillings in endodontic surgery. *Int Endod J* 1989; 22: 295-298.
- 16) Danin J, Linder L, Sund ML, Sromberg T, Torstenson B, Zetterqvist L. Quantitative radioactive analysis of microleakage of four different retrograde fillings. *Jpn J Conserv Dent* 1992; 25: 183-188.
- 17) Vignaroli PA, Anderson RW, Pashley DH. Longitudinal evaluation of the microleakage of dentin bonding agents used to seal resected root apices. *J Endod* 1995; 21: 509-512.
- 18) Rud J, Munksgaard EC, Andreasen JO, Rud V, E. Asmussen. Retrograde root filling with composite and a dentin-bonding agent. 1. *Endod Dent Traumatol* 1991; 7: 118-125.
- 19) Andreasen JO, Munksgaard EC, Fredebo L, Rud J. Periodontal tissue regeneration including cementogenesis adjacent to dentin-bonded retrograde composite fillings in humans. *J Endod* 1993; 19: 151-153.
- 20) Rud J, Rud V, Munksgaard EC. Long-term evaluation of retrograde root filling with dentin-bonded resin composite. *J Endod* 1996; 22: 90-93.
- 21) Rud J, Rud V, Munksgaard EC. Periapical healing of mandibular molars after root-end sealing with dentine-bonded composite. *Int Endod J* 2001; 34: 285-292.
- 22) Kiyomura M. Bonding strength to bovine dentin with 4-META/MMA-TBB resin – long-term stability and influence of water. *J Jpn Soc Dent Mater Dev* 1987; 6: 860-872.
- 23) Nakabayashi N, Takarada K. Effect of HEMA on bonding to resin. *Dent Mater* 1992; 8: 125-130.
- 24) Nakabayashi N, Ashizawa M, Nakamura M. Identification of a resin-dentin hybrid layer in vital human dentin created *in vivo* durable bonding to vital dentin. *Quintessence Int* 1992; 23: 135-141.
- 25) Noguchi H, Sugaya T, Kato H. Treatment of vertically fractured root by cohesion. 1. Evaluations of cytotoxicity of adhesive resin cement with cultured periodontal ligament cells. *Jpn J Conserv Dent* 1997; 40: 1445-1452.
- 26) Noguchi H, Sugaya T, Kato H. Treatment of vertically fractured root by cohesion. 2. Histological evaluations on cohesion with adhesive resin cement and replantation. *Jpn J Conserv Dent* 1997; 40: 1453-1460.
- 27) Kawamura N, Sugaya T, Miyaji H, Kawanami M. Influence of curing conditions on tissue reaction to the 4-META/MMA-TBB resin. *Jpn J Conserv Dent* 2003; 46: 853-859.
- 28) Sugaya T, Noguchi H, Hasegawa Y, Tanaka Y, Kawanami M. Clinical evaluation of 4-META/MMA-TBB resin as a root-end sealant following apicoectomy. *Jpn J Conserv Dent* 2002; 45: 62-67.
- 29) Sugaya T, Noguchi H, Miyaji M, Kawanami M. Prognosis of periradicular surgery using 4-META/MMA-TBB resin as root-end sealant. *J Dent Res* 2003; 82 (suppl): 117.
- 30) Masaka N. Long-term observation of fractured tooth roots preserved by adhesion. *Adhesion Dent* 1995; 13: 156-170.
- 31) Sugaya T, Kawanami M, Noguchi H, Kato H, Masaka N. Periodontal healing after bonding treatment of vertical root fracture. *Dent Traumatol* 2001; 17: 174-179.
- 32) Kawai K, Masaka N. Vertical root fracture treated by bonding fragments and rotational replantation. *Dent Traumatol* 2002; 18: 42-45.
- 33) Sano H, Shono T, Sonoda H, Takatsu T, Ciucchi B, Pashley DH. Relationship between surface area for adhesion and tensile bond strength – Evaluation of a micro-tensile bond test. *Dent Mater* 1994; 10: 236-240.
- 34) Inoue T, Takahashi H, Nishimura F. Anisotropy of tensile strengths of bovine dentin regarding dentinal tubule orientation and location. *Dent Mater J* 2002; 21:

- 32-43.
- 35) Liu J, Hattori M, Hasegawa K, Yoshinari M, Kawada E, Oda Y. Effect of tubule orientation and dentin location on the microtensile strength of bovine root dentin. *Dent Mater J* 2002; 21: 73-82.
- 36) Inoue S, Murata Y, Sano H. Effect of NaOCl treatment on bond strength between indirect resin core-buildup and dentin. *Dent Mater J* 2002; 21: 343-354.
- 37) Keh E, Hayakawa I, Takahashi H, Watanabe A, Iwasaki Y, Akiyoshi K, Nakabayashi N. Improving a self-curing dental resin by eliminating oxygen hydroquinone and water from its curing process. *Dent Mater J* 2002; 21: 373-382.
- 38) Yoshida Y, Shirai K, Shintani H, Okazaki M, Suzuki K, Van Meerbeek B. Effect of presilanization filler decontamination on esthetics and degradation resistance of resin composites. *Dent Mater J* 2002; 21: 383-395.
- 39) Kameyama A, Ihara S, Amagai T, Miyake Y, Kawada E, Oda Y, Yanagisawa T, Hirai Y. Adhesion of 4-META/MMA-TBB resin to heated dentin: effects of pre-treatments with FeCl_3 and/or HEMA. *Dent Mater J* 2003; 22: 1-9.
- 40) Inoue S, Pereira PNR, Kawamoto C, Nakajima M, Koshiro K, Tagami J, Carvalho RM, Pashley DH, Sano H. Effect of depth and tubule direction on ultimate tensile strength of human coronal dentin. *Dent Mater J* 2003; 22: 39-47.
- 41) Burrow MF, Satoh M, Tagami J. Dentin bond durability after three years using a dentin bonding agent with and without priming. *Dent Mater* 1996; 12: 302-307.
- 42) Hashimoto M, Ohno H, Kaga M, Endo K, Sano H, Oguchi H. *In vivo* degradation of resin-dentin bonds in humans over 1-3 years. *J Dent Res* 2000; 79: 1385-1389.
- 43) Hashimoto M, Ohno H, Kaga K, Sano H, Oguchi H. The effect of hybrid layer thickness on bond strength – demineralized dentin zone of hybrid layer. *Dent Mater* 2000; 16: 406-411.
- 44) Nakabayashi N, Watanabe A, Arao T. A tensile test to facilitate identification of defects in dentin bonded specimens. *J Dent* 1998; 26: 379-385.
- 45) Hashimoto M, Ohno H, Kaga M, Sano H, Tay FR, Oguchi H, Araki Y, Kubota M. Over-etching effects on micro-tensile bond strength and failure patterns for two dentin bonding systems. *J Dent* 2002; 30: 99-105.
- 46) Sano H, Yoshikawa T, Pereira PNR, Kanemura N, Morigami M, Tagami J, Pashley DH. Long-term durability of dentin bonds made with a self-etching primer *in vivo*. *J Dent Res* 1999; 78: 906-911.
- 47) Fukushima T, Hirobe T. Influence of water on bonding of various methacrylates to dentin treated with 10% citric acid-3% ferric chloride solution. *Dent Mater J* 1990; 9: 12-18.
- 48) Hirabayashi C, Imai Y. Studies on MMA-TBB resin – Comparison of TBB and other initiators in the polymerization of PMMA/MMA resin. *Dent Mater J* 2002; 21: 314-321.
- 49) Hirabayashi C. Studies on MMA-TBB resin –The effect of dual use of TBB and other initiators on polymerization of PMMA/MMA resin. *Dent Mater J* 2003; 22: 48-55.