

ANNOTATIONES ZOOLOGICAE JAPONENSES

Volume 28, No. 1—March 1955

Published by the Zoological Society of Japan
Zoological Institute, Tokyo University

A New Rotifer (Order Ploima) from Japan¹⁾

With 1 Text-figure

Kokichi YAMAMOTO

Otsu Hydrobiological Station, University of Kyoto

(Communicated by UENO)

A new rotifer belonging to the genus *Lecane* (family Euchlandae) was found in a plankton sample collected from a pond called *Taka-muma*, one of the bodies of water which are situated on the sand dune along the Pacific Coast of the Shimokita Peninsula, Aomori Prefecture. The sampling was carried out there by the staff of the Otsu Hydrobiological Station on August 31st, 1953. The water of the pond showed a pH value of 6.6, RpH value 6.7, and a methyloange alkalinity 0.44 cc n/10 HCl/100 cc of water.

DESCRIPTION OF THE SPECIES

Lecane latissima sp. nov.

Outline of lorica very broadly ovate, width greater than length; anterior process or cusp absent. Dorsal lorica very broad, anterior margin slightly convex,

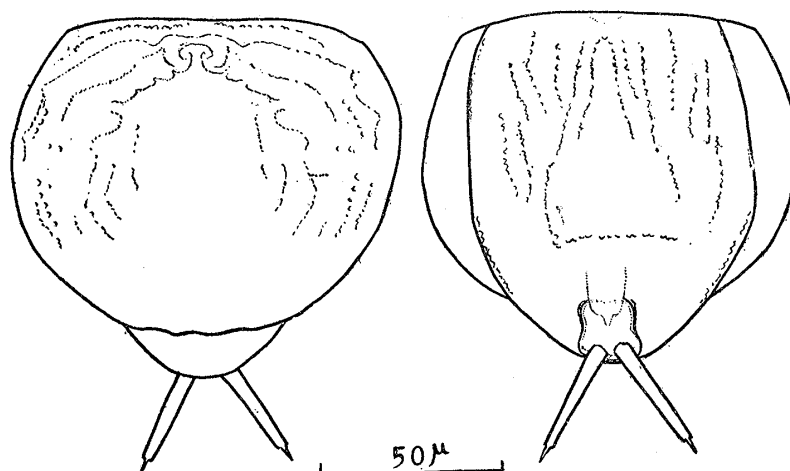


Fig. 1. *Lecane latissima* sp. nov.
left: dorsal view, right: ventral view.

1) Contributions from the Ôtsu Hydrobiological Station of the University of Kyoto.
No. 151.

rounded posteriorly; surface markings irregular accompanied by small dotted patterns. Ventral lorica oblong, anterior margin coincident with dorsal one; rounded posteriorly, surface markings consisting chiefly of longitudinal dotted lines. First foot-segment robust, second foot-segment large and irregular, not projected beyond ventral posterior margin. Toes comparatively long, slightly tapering towards tips and then terminated in slender claws; basal spicules indistinct.

The dimensions are as follows:

length of dorsal plate	90 μ
width of dorsal plate	112 μ
length of ventral plate	103 μ
width of ventral plate	85 μ
length of toe without claw	33 μ
length of claw	6 μ

The general contour of the lorica of the present species resembles that of *Lecane hornemanni* (Ehrenberg), but differs from the latter in the features of surface markings on both dorsal and ventral plates, forms of the foot-segments and in the toes. Moreover, the toes of the present species terminate in claws, while those of *Lecane hornemanni* terminate in acute points without claws.

LITERATURE

- Harring, H. K. and F. J. Myers, 1926. The Rotifer fauna of Wisconsin. III. Trans. Wisc. Acad. Sci. Arts and Let., **22**: 315-423.