

NOTES ON TWO GEOMETRID GENERA RELATED TO *COMPSOPTERA* (Lepidoptera)

By Hiroshi Inoue

Eiko Gakuen, Jesuit High School, Yokosuka

In this paper will be described two genera and species of the Japanese and Formosan Geometridae belonging to the subfamily Ennominae, closely related to *Compsoptera*.

I offer my thanks to Mr. D. S. Fletcher, British Museum (Natural History), for his gift of *Compsoptera jourdanaria* (de Villers) for comparison.

Genus *Aoshachia* Matsumura

Type of the genus: *Aoshachia virescens* (Marumo).

Aoshachia Matsumura, Journ. Coll. Agr. Hokkaido Imp. Univ, 19 (1): 9, 1927; Gaede in Seitz, Macrolep., 10: 624, 1930; Matsumura, Ins. Mats., 8: 158, 1934 (Notodontidae).

Marumona Sawamoto, Ins. Mats., 12: 187, 1938 (Geometridae, Oenochrominae); Sawamoto, Ins. Mats., 13: 105, 1939 (Geometridae, Ennominae). —**syn. nov.**—

Distinguished from *Compsoptera* as follows:

- (1) Antennal pectinations of ♂ shorter, branches terminating in a single short bristle.
- (2) Face prominent, frontal tuft more developed.
- (3) Forewing with apex acuter, termen more pronounced; both wings thinly scaled, semi-transparent.
- (4) Uncus strongly forked, both arms slender.
- (5) Costa elongate, apex sharply pointed.
- (6) Juxta very strong, curved upward near apex, apex being pointed.
- (7) Aedoeagus very long, slender, with apex curved downward.
- (8) Saccus elongate.

* Prout (1938) with his keen eyes suggests its correct systematic position and its occurrence in Formosa, mentioning, "*D. virescens* Marumo. This species must be removed from *Doroptera* and that genus, in consequence, from the Palaearctic fauna. Through the kindness of Dr. Bytinski-Salz the British Museum has acquired a ♂ of it or entirely closely related species from Hori, Formosa, 26 April 1934 (L. Gressett). It is evidently a *Prosoplopha*, perhaps slightly less robust than *P. simplex* Btlr. ♂, certainly narrower winged; the only subcostal anastomosis on the forewing is a short fusion of 1st subcostal with costal; the 2nd radial of the hindwing is obsolete (as is shown in Marumo's figure but not implied in his description); the prominent face and strong frontal tuft are characteristically developed. Prof. W. T. M. Forbes (in litt.) informs me that the ♀ from the same source has the 2nd radial of hindwing developed, though a little weakened. Probably the species is scarcely Palaearctic."

This genus was first proposed by Matsumura (1927) as a Notodontid genus, then by Sawamoto (1938) as a Geometrid, and subsequently its position was transferred by Sawamoto (1939) from Oenochrominae to Ennominae (=Geometrinae auct.) following Prout's advice (in litt.).

As Gaede (1930) suggests and as Prout (1938)* (footnote, p. 71) describes, it is closely related to *Compsoptera* Blanchard, 1945 (= *Prosopolopha* Lederer, 1853) [type: *jourdanaria* (de Villers)] in its appearance, venation, shape, structure of ♂ genitalia and other characteristics.

Aoshachia virescens (Marumo)

Doratoptera (?) *virescens* Marumo, Journ. Coll. Agr. Imp. Univ. Tokyo, 8 (2): 160, pl. 3, f. 4, 1920; Prout in Seitz, Macrolep., suppl. 4: 4, 1934, ditto: 216, 1938.*

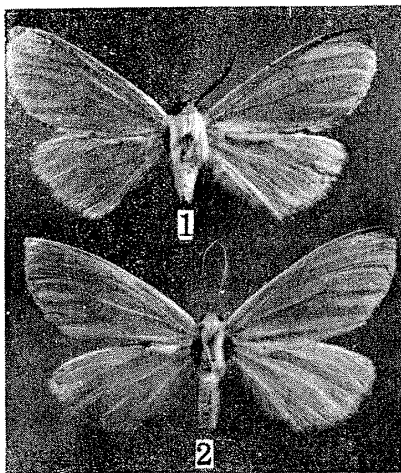
Aoshachia virescens Matsumura, Journ. Coll. Agr. Hokkaido Imp. Univ., 19 (1): 9, pl. 5, f. 37, 1927; Gaede in Seitz, Macrolep., 10: 624, 1930; Matsumura, 6000 Ill. Ins. Jap.: 623, no. 103, 1931; Matsumura, Ins. Mats., 8: 158, 1934; Hori et Nomura, Cat. Ins. Kyushu et Ryukyu, 1: 66, 1937. —syn. nov.—

Marumona virescens Sawamoto, Ins. Mats., 12: 187, t. 4, abb. 1, 1938, ditto, 13: 106, 1939.

Marumo's *virescens* is founded on two females from Tanegashima and one female from Yakushima, while Matsumura described his *virescens* (Notodontidae) based on three males and one female collected in Formosa. After having compared several Formosan and Japanese specimens with the type series of Matsumura's species preserved in Hokkaido University, I found that the two *virescens* are conspecific and that there is no geographic divergence between the Japanese and Formosan representatives.

Besides the above mentioned localities, Hori and Nomura (1937) recorded Kagoshima, South Kyushu, based on a single male collected in April, and then Sawamoto again recorded Kagoshima by 1 ♂, 1 ♀, but the male he examined at Kyushu University seems to be the same as Hori and Nomura mentioned. I have recently obtained a beautiful male collected at Hikosan, North Kyushu, 25 April 1954 (H. Kuroko), through the courtesy of Mr. M. Nakamura. Thus, the distribution of this species, now established, is Kyushu, Tanegashima, Yakushima and Formosa.

The months of appearance of this moth, based on the above cited papers and on the specimens in my collection, are March and April in Formosa, April and June in Yakushima, and April in Kyushu.



Aoshachia virescens (Marumo)

1: ♂ (Formosa) 2: ♀ (Yakushima).

Genus **Descoreba** Butler

Type of the genus: *Descoreba simplex* Butler.

Descoreba Butler, Ann. Mag. Nat. Hist., (5) 1: 394, 1878.

Discoreba Leech (err. typogr.), Ann. Mag. Nat. Hist., (6) 19: 319, 1897.

Prosopolopha Staudinger (nec Lederer), Cat. Lep. Phal. (ed. 3) 1: 358, 1901.

Compsoptera Prout (nec Blanchard) in Seitz, Macrolep., 4: 413, 1920.

Closely related with *Compsoptera* and *Aoshachia*, with which the venation nearly identical, but separated from them by the following points:

(1) Antennal pectinations of ♂ much shorter than in *Compsoptera*, pectinations from about the middle of each segment, while in *Compsoptera* and *Aoshachia* they branch from near the base of each segment. Pectinations terminate in two bristles.

(2) Face and frontal tuft less prominent than in the two genera.

(3) Wings more ample in ♂ and the apex of forewing much acuter in ♀.

(4) Uncus much shorter than in *Compsoptera*, not forked as in *Aoshachia*.

(5) Length of aedeagus nearly intermediate between the two genera.

(6) Shape of juxta quite different from them.

So far as I am aware, the sole species *simplex*, which formerly was placed in *Compsoptera*, belongs to the present genus. The food plant of *simplex*, thus far known, are *Prunus*, *Cornus* and *Quercus*. The adult of this species appears in spring as the preceding moth, while *Compsoptera jourdanaria* wings in autumn.

Explanation of Plate 13

Fig. 1. *Compsoptera jourdanaria*, section of ♂ antenna.

Fig. 2. *Aoshachia virescens*, section of ♂ antenna.

Fig. 3. *Descoreba simplex*, section of ♂ antenna.

Fig. 4. *Aoshachia virescens*, ♂ venation.

Fig. 5. *Compsoptera jourdanaria*, ♂ genitalia.

Fig. 6. *Aoshachia virescens*, ♂ genitalia.

Fig. 7. *Descoreba simplex*, ♂ genitalia.

摘 要

松村 (1927) によつて台湾の標本に基づいて記載された新属新種 *Aoshachia virescens* Matsumura (シャチホコガ科) は、丸毛 (1920) が種子島と屋久島でとれた2♀によつて発表した *Doratoptera* (?) *virescens* Marumo (シャクガ科ホシシャク亜科) と同一種であることがわかつた。従つて、沢本 (1938) が *D. virescens* Marumo を type として発表した新属 *Marumona* は、*Aoshachia* の異名となり、学名は *Aoshachia virescens* (Marumo) とよぶのが正しいことになる。本種は、雄交尾器の形態・脈相そのほかの特徴から、エダシャク亜科の *Compsoptera* に近縁である。和名は、はじめ松村 (1931) によつてアオシャチホコと名付けられたが、堀及び野村 (1937) は既に同一の名が他のシャチホコに用いられているという理由で、ウスアオシャチホコと改めた。沢本 (1938) はキイ

ロトガリシャクと付け、のちに位置をエダシャクに移してき(1939)キイロエダシャクと語尾を変更した。新鮮な個体は薄緑色で、古くなると黄色に変わるが、私はこの最後の名称を採用したいと思う。分布は、今日迄の資料によると、台湾・屋久島・種子島・九州鹿児島となるが、最近私は中村正直氏の好意で、黒子浩氏が英彦山で1954年4月25日に採集された1♂を手に入れることができた。

Descoreba simplex Butler ハスオビエダシャクは、従来 *Compsoptera* (= *Prosopolopha*) に入れてあつたが、この属や *Aoshachia* に近縁であつても、別属とした方が良いので、*simplex* を type として Butler (1878) の創設した *Descoreba* を復活させることにした。従つて今日のところ *Compsoptera* に属するものは、わが国に分布していないことになる。なお、*Compsoptera* の模式種 *jourdanaria* (de Villers) は、フランス南部・スペイン・サルヂニア・アルジェリーに分布し、成虫は秋に出現する。一方キイロエダシャクとハスオビエダシャクは何れも春に発生することがわかっている。

フサオシャチホコは日本に産するか

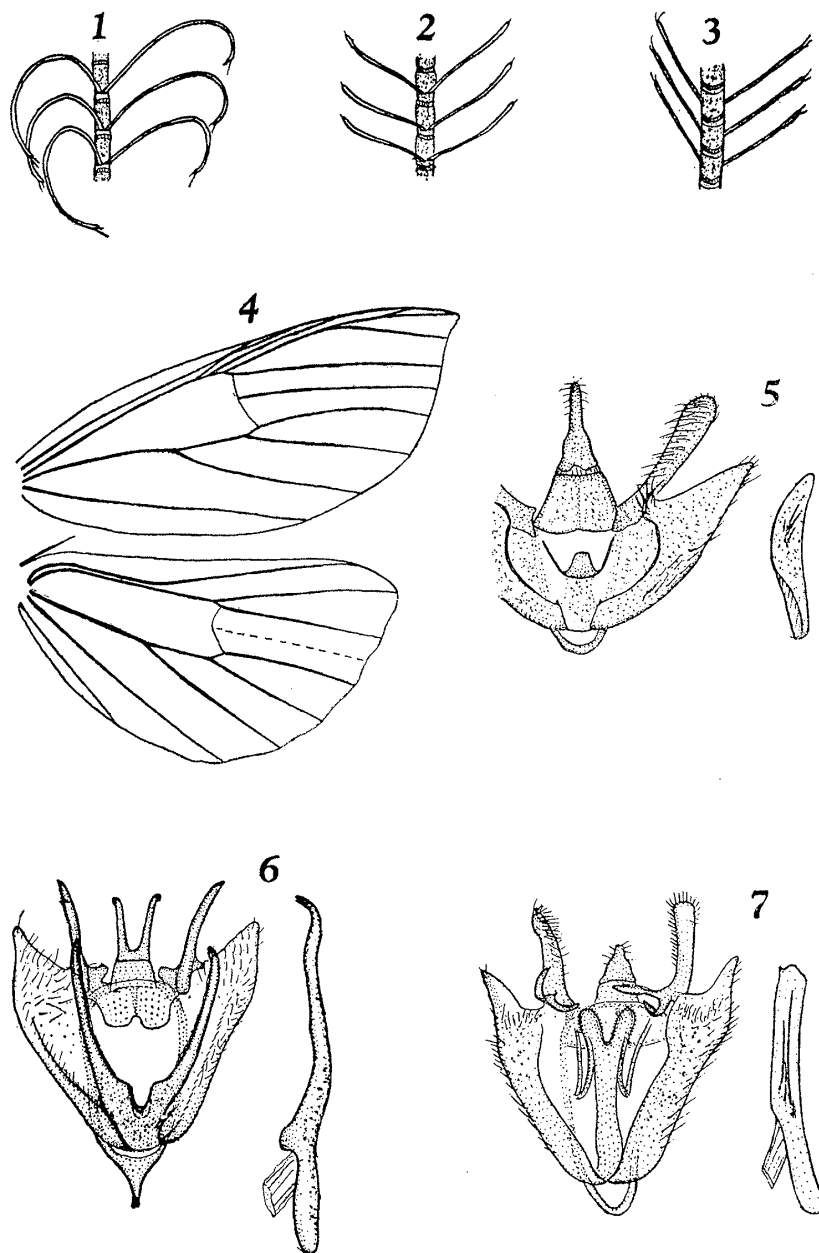
井 上 寛

Dudusa sphingiformis Moore フサオシャチホコは朝鮮・北支那・印度北部に分布している大型のシャチホコガである。わが国からは、松村(動物学雑誌, vol. 31:74, 1919)が「日光」を記録し、のちに大図鑑: 629, 1931でこの産地がくり返し述べられている。私は久しい以前から、この種が日本に分布しているかどうか、疑問に思っていたので、昨年北海道大学を訪れた折に、調べて見たところ、同大学には、朝鮮釈王寺産の1♂が保存されているだけであることを知った。松村博士の研究され、記録された標本は、殆んど同大学標本室に見出される筈であるし、他の人のコレクションを借りて(或は見て)記録されたとは考えられないので「日光」という記録は何かの間違である。私は、このほかに本種が日本から記録された文献を知らないし、標本を見たこともないので、本種を一応日本のファウナから除外して置き度いと思う。

なお、松村(Ins. Mats., vol. 4: 79, 1929)は、本種を模式種として *Dudusoides* という属を創設しているし、Bryk (Arkiv f. Zool., Bd. 42A: 1, t. 1, f. 1, 1949)は、ビルマ産の1♂で *birmana* とよぶ亜種を発表している。

上の短報を九州大学の江崎博士の許にお送りしたところ、折り返し同博士より御教示をいただいたので、御好意に感謝すると共に次のように追記して置く。

問題のフサオシャチホコは、はじめの鈴木元次郎氏が、日光産の標本を所持していて、これを松村博士が判定し、新日本千蟲図解, 4: 828, 1921で記録したものであるが、この本では採集者が高椋悌吉氏となつている。江崎博士御自身その標本(鈴木氏が自分で採集したらしい)を何回も見て居られ、また当時京阪地方で有名だつたそうである。のちに鈴木氏の標本の多数が、九大の昆蟲学教室で購入されたが、問題のシャチホコは含まれていなかった。それで高椋氏から松村博士に示された標本は鈴木氏が高椋氏に売つたものと考えられる。



Inoue — Two Geometrid genera related to *Compsoptera*