

Kontyû, 33 (2) : 241-245. 1965

日米科学協力研究：太平洋地域の昆虫類の地理的分布と生態
Japan-U. S. Co-operative Science Program: Zoogeography and
Ecology of Pacific Area Insects

ONE NEW GENUS, TWO NEW SPECIES AND FOUR
UNRECORDED SPECIES OF THE ARCTIIDAE
FROM JAPAN (Lepidoptera)

By Hiroshi Inoue

4157, Kugenuma, Fujisawa, Kanagawa Pref.

In this paper one new species, assigned to a new genus, will be described and four unrecorded species will be recorded all from the Ryukyu Islands, while another new species from Japan proper will be described. The specimens of Messrs. H. Hasegawa's, G. A. Samuelson's and my collection were secured during the field works in 1963 on the Ryukyus as one of the projects of Japan-U. S. Co-operative Science Program. The other specimens were donated to me personally for study by Dr. S. Asahina, Messrs. S. Azuma, H. Fukuda, Y. Nagai and S. Sakurai, excepting Y. Arita collection which Prof. T. Ishihara, Ehime University, kindly permitted me for free access to.

While my hearty thanks are due to the above cited gentlemen for valuable specimens, I am also indebted to Mr. D. S. Fletcher, British Museum (Nat. Hist.), for his advice. Acknowledgement is also made of the partial financial support for this investigation through a grant from the Japan Society for the Promotion of Science, as a part of the Japan-U. S. Co-operative Science Program.

Nipponasura gen. nov.

Proboscis fully developed, palpus upturned, not reaching vertex of head, frons and dorsal surface of head roughly scaled, hindtibia with two pairs of short spurs, abdomen robust and short, covered with long hair. Antenna in ♂ dentate-ciliate, in ♀ thinner, filiform, sparsely pubescent.

Wings elongate; forewing with apex and tornus rounded, hindmargin roundish, cell narrow, 12-veined, veins 2, 3, 4, 5, 6 free, 5 far apart from 4 and closer to 6 at its origin, 7 given-off from stalk of 8 and 9, 10 and 11 free, 6, 7-9 and 10 arising from near upper angle of cell, 11 curved. Hindwing with apex rather produced, tornus rounded, 2, 3, 4, 5 free, 6 and 7 stalked, 8 anastomosing with cell for a long distance, separated at near upper angle of cell, discocellulars angled inward.

Type species: *Nipponasura sanguinea* sp. nov.

Probably most closely related to the huge genus *Asura*, especially Section III in

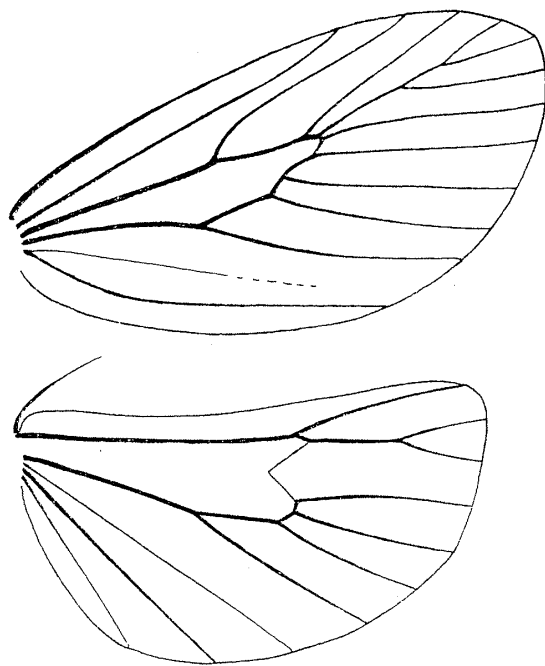


Fig. 1. *Nipponasura sanguinea* sp. nov. ♂, venation.

Hampson's classification (1900, Cat. Lep. Phal. Brit. Mus. 2: 321), but quite distinct in the shape of cell and the venation, e.g. vein 5 of forewing present, 7, 8, 9 stalked, etc., and in the coloration and simple scheme of markings.

***Nipponasura sanguinea* sp. nov.**

Patagium, tergum, forewing rosy red, in ♀ pale pinkish red, head and thorax above fuscous, mixed with red hair, frons in ♂ grey, in ♀ creamy yellow; forewing with costa and hindmargin narrowly blackish brown, termen and apical area broadly margined with blackish brown, in ♀ blackish margin is narrower, fringe nearly concolorous with terminal area. Hindwing uniformly blackish brown, with paler costal area. Under surface similar, but forewing with blackish marginal area much more extended inward, but sometimes forewing with termen narrowly margined with blackish, with an ill-defined subterminal fascia from costa to near the end of vein 3.

Length of forewing: ♂, 6.5-7.0 mm; ♀, 7.0-9.0 mm.

Holotype (♂): Ka-arayama, Ishigaki Is., 12. xi. 1963 (H. Inoue). Paratypes: Mt. Ushiku, Iriomote Is., 3-10. x. 1963, 4 ♂ (G. A. Samuelson); Shirahama, Iriomote Is., 14. xi. 1963, 3 ♂, 1 ♀ (H. Inoue); type-locality, 6. v. 1963, 1 ♂; Takeda, Ishigaki Is., 4. v. 1963, 1 ♂; Tabaru-gawa, Yonakuni Is., 9. v. 1963, 1 ♀; Urobe-dake, Yonakuni Is., 12. v. 1963, 1 ♂, 1 ♀; Hikawa, Yonakuni Is., 16. v. 1963, 1 ♀ (Y. Arita). The holotype and four paratypes in coll. H. Inoue, four paratypes in coll. Bishop Museum, four paratypes in coll. Ehime University, two paratypes in coll. Kyushu University and one paratypes in coll. British Museum (N. H.).

Distribution: Ryukyu Islands (Ishigaki Is., Iriomote Is., Yonakuni Is.).

Siccia fukudai sp. nov.

Antenna in ♂ bipectinate, in ♀ sparsely ciliate. Head white, ventral and lateral margin of frons fuscous, palpus fuscous, upturned, not reaching vertex of head, thorax above white, mixed with fuscous scales, abdomen dark grey, ♀ with tuft of white hair at tip.

Forewing above white, dotted with fuscous, lines dark brown, subbasal and ante-median lines nearly parallel, weakened or vanished at submedian fold, median and postmedian lines nearly parallel, angled inward at vein 11, then biangulate, nearly vertical or oblique outward near submedian fold, where they vanish or weakened, discocellular spot close to postmedian, termen fuscous, interrupted with white ground colour at the end of each vein, fringe white. Hindwing and under surface pale fuscous, forewing with dark discocellular spot traceable if the ground colour is pale or if that on upper surface is very strong, fringes of both wings whitish.

Length of forewing: ♂ ♀, 8-10 mm.

♂ genitalia: valva strongly sclerotized, oblong, strongly dentate at apical margin and minutely so on inner surface, sacculus an isolated process, a pair of long processes arising from juxta, left one a little longer than the right, aedeagus cylindrical, cornuti a cluster of short thorns. ♀ genitalia: ostium with a pair of short processes, ostium bursae a broad belt-like plate, bursa copulatrix irregular in shape, with some hard plates decorated with spines.

Holotype (♀): Ikeizumi, Takefu, Fukui Pref., 22. vii. 1962 (H. Fukuda). Paratypes: type-locality, 7 & 12. vii. 1961, 2 ♀; 19. vii. 1962, 1 ♀; 16 & 17. vii. 1963, 2 ♀; 15. vii.-2. viii. 1964, 4 ♀; Ikeda-mura, Imadate-gun, Fukui Pref., 16. viii. 1964, 1 ♂ (H. Fukuda). Takao-san, Tokyo, 15. vii. 1959, 1 ♀ (H. Inoue). Kusanagi, Shimizu City, Shizuoka Pref., 6. vii. 1958, 1 ♀ (Y. Nagai). Niitsu City, Niigata Pref., 18. vii. 1963, 1 ♀

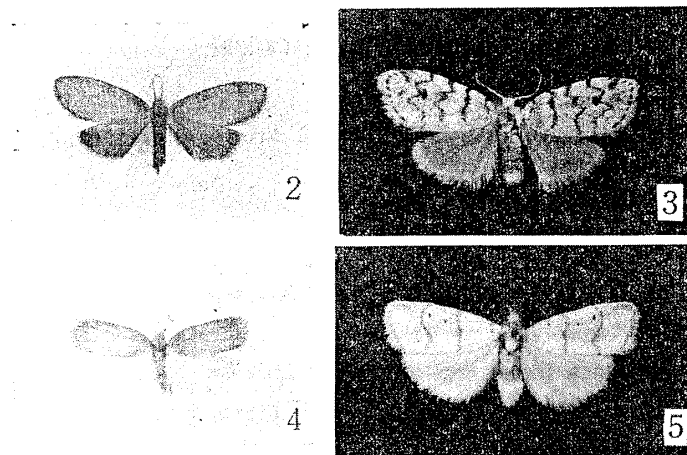


Fig. 2. *Nipponasura sanguinea* sp. nov. ♀, paratype.

Fig. 3. *Siccia fukudai* sp. nov. ♀, holotype.

Fig. 4. *Mithuna fuscivena* Hampson, ♂.

Fig. 5. *Chionaema harterti* (Elwes), ♂.

(S. Sakurai). One paratype in the British Museum (N. H.) collection and the others in coll. H. Inoue.

Distribution: Japan (Honshu).

Not a typical species of *Siccia* in the venation: forewing with veins 4 and 5 stalked, 7, 8, 9 stalked, 10 and 11 free; hindwing with 4 and 5 coincident (in the ♂ long-stalked), 6 and 7 long-stalked. Recalls *S. taprobanis* (Walker), but not so heavily marked, and quite distinct from it in the structure of the genitalia and in the venation.

The following four species are new to the fauna of Japan.

Mithuna fuscivena Hampson

Mithuna fuscivena Hampson, 1896, Fauna Brit. Ind. Moths, 4: 495.

Shirahama, Iriomote Is., 14. xi. 1963, 4 ♂; Omotodake, Ishigaki Is., 17. xi. 1963, 2 ♂ (H. Inoue).

Chionaema harterti (Elwes)

Bizone harterti Elwes, 1890, Proc. zool. Soc. Lond., 1890: 398.

Yona, Okinawa, 23. v. 1962, 1 ♀ (S. Asahina); Nago, Okinawa, 18. ix. 1963, 1 ♀ (S. Azuma); Yona, Okinawa, 26. xi. 1963, 1 ♂ (H. Inoue); Shirahama, Iriomote Is., 13. xi. 1963, 2 ♂ (H. Inoue).

Neasura hypophaeola Hampson

Neasura hypophaeola Hampson, 1900, Cat. Phal. Brit. Mus. 2: 423, f. 335.

Ka-arayama, Ishigaki Is., 12. xi. 1963, 1 ♀; Yona, Okinawa, 26. xi. 1963, 1 ♂ (H. Inoue).

Nikaea longipennis (Walker)

Hypercompa longipennis Walker, 1855, List lep. Ins. Brit. Mus. 3: 655.

Omotodake, Ishigaki Is., 5. v. 1963, 1 ♀ (Y. Arita); Shirahama, Iriomote Is., 5. xi. 1963, 1 ♀ (H. Hasegawa).

摘 要

本文では、ヒトリガのうち、琉球から1新属新種を記載し、4種の日本未記録種を記録し、本州から1新種を記載した。

***Nipponasura sanguinea* Inoue** マエベニコケガ (新称)

前翅は美しい赤色(♀では紅色)で、翅の周囲は黒褐色で縁取られ、後翅は表裏とも黒褐色、前翅裏面では外縁の黒褐色部が表面より拡大されている。触角♂は鋸歯状で微毛状、♀は絲状。

Bishop Museum の G. A. Samuelson 氏、愛媛大学の有田豊氏及び私が採集したもので、灯火に飛来する。

分布：石垣島・西表島・与那国島。

Siccia fukudai Inoue クロテンシロコケガ (新称)

白地に黒褐色の横線をもち、横脈点は大きい。中・外横線はほぼ平行で、強く屈曲する。触角♂は両櫛歯状、♀は微毛状。

福井県武生市 (福田久美氏) で多数採集され、新潟県新津市 (桜井精氏)、静岡県清水市草薙 (永井洋三氏)、東京都高尾山 (井上) でそれぞれ1♀がとれた。♂は、福井県今立郡池田村 (福田氏) で採集された1頭しかわかつていない。

分布：本州。

次の4種は琉球から発見され、何れも日本未記録種である。

Mithuna fuscivena Hampson チビコケガ (新称)

西表島、石垣島 (井上)。

Chionaema harterti (Elwes) キスジシロコケガ (新称)

小型で、前翅の横線が黄褐色で細いことによつて同属の既知種から区別される。横脈と中室内に小黑点がある。

沖縄与那 (朝比奈正二郎博士・井上)、同名護 (東清二氏)、西表島 (井上)。

Neasura hypophaeola Hampson ムモンウスキコケガ (新称)

石垣島、沖縄与那 (井上)。

Nikaea longipennis (Walker) トラガモドキ

本種は松村 (1931, 日本昆虫大図鑑, p. 972, no. 1655) によつて台湾産が図示されているが、調べた標本が2♀なので亜種の問題については、将来の研究にまちたい。

石垣島 (有田豊氏)、西表島 (長谷川仁氏)。

Explanation of Plate 11

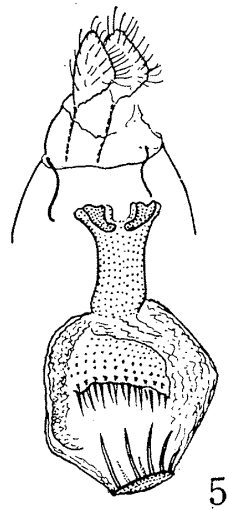
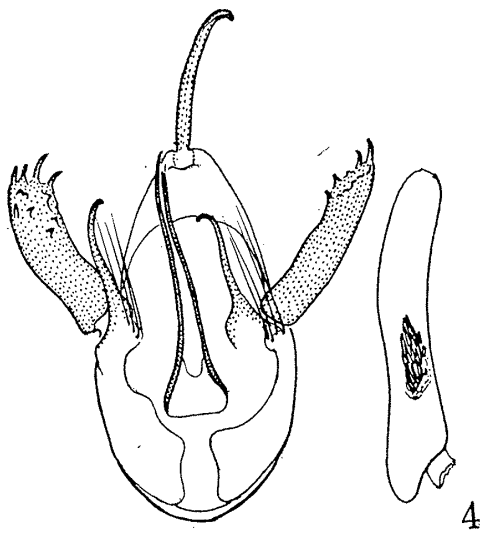
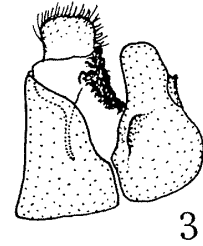
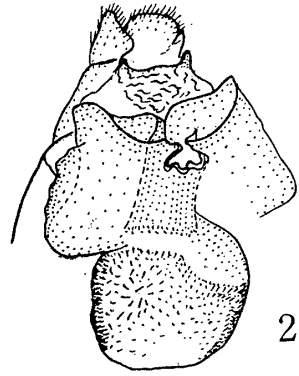
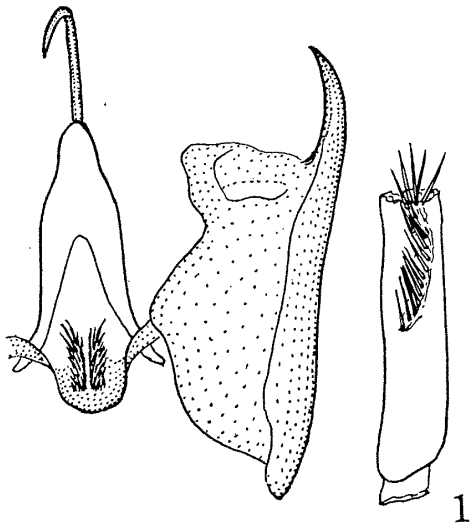
Fig. 1. *Nipponasura sanguinea* sp. nov. ♂ genitalia.

Fig. 2. Ditto. ♀ genitalia, ventral view.

Fig. 3. Ditto. ♀ genitalia, lateral view.

Fig. 4. *Siccia fukudai* sp. nov. ♂ genitalia.

Fig. 5. Ditto. ♀ genitalia, ventral view.



Inoue—Arctiidae from Japan