

Kontyû, Tokyo, 45(1): 9-11. March 25, 1977

A New Species of the Genus *Hybocampa* LEDERER (Lepidoptera, Notodontidae) from Tsushima Island

Shigero SUGI

41-3, Akazutsumi 5, Setagaya, Tokyo 156, Japan

Synopsis *Hybocampa tokui* sp. nov., founded on two males from Tsushima Island, Japan, is described.

Hybocampa tokui sp. nov.

(Fig. 1)

♂. Length of forewing 21 mm. Palpi whitish inside, mixed with black and brown hair laterally. Vertex grey mixed with black and white. Antennal shaft clothed above with whitish scales. Tegula deep grey brown, patagia grey white, with black transverse band at base, fringed with black hair interiorly. Thorax dark grey brown. Forewing pale leaden grey, mixed with ochreous. A large wedge-shaped black spot below costa, which is edged with white stria inside, defined below by median nervure, its outer edge angled outward in cell and defined by white stria below costa, which is followed by a black stria beyond it. Hind marginal area suffused with dark grey to postmedian line, which is somewhat diffuse, serrate on veins; reniform indistinct, merely represented by dark minute point at end of cell; subterminal line despatched from white quadrate point below costa, which is edged at both sides with black striae, double, incurved to vein 4 and below vein 3 to hind margin; veins tinged with fuscous beyond middle of wing to termen, subterminal space suffused with dark grey; cilia dark grey brown, with pale ochreous points on veins. Hindwing greyish white, veins infuscated; a black patch at tornus, which is divided by white stria; cilia dark grey brown chequered with white at veins. Underside of forewing whitish entirely suffused with grey, costa suffused with blackish, with striae as in upperside; of hindwing whitish, with two fuscous subcostal spots, cilia as in upperside.

♀. Unknown.

Male genitalia (Figs. 2 & 3). Fairly typical for the genus in structures. Uncus large, wider than height, with caudal emargination moderate; socii hook-like. Valva strongly bent ventrad, internal process well developed, with apex free and well beyond the ventral margin of valva. Aedeagus cylindrical, moderate in length, with apical one-third coiled; cornutus wanting. Eighth sternite much lower than width, scarcely modified in shape, the caudal margin not sclerotized nor spinulated as in the other species of the genus.

Holotype ♂. Yatateyama, Tsushima I., 5. iv. 1973 (T. WATANABE). Genitalia slide SS-2364. Preserved in my collection. Paratype. 1 ♂, Kamizaka, Tsushima

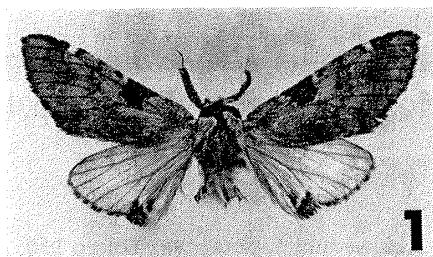
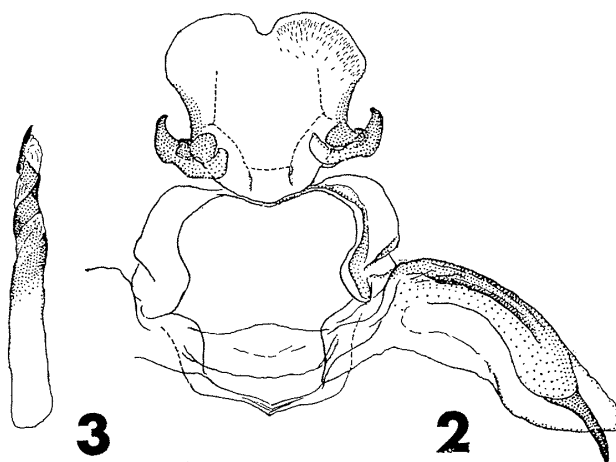


Fig. 1. *Hybocampa tokui* sp. nov. Holotype ♂.



Figs. 2-3. *Hybocampa tokui* sp. nov. — 2. Male genitalia. — 3. Aedeagus. Slide No. SS-2364.

I., 29. iii. 1973 (T. WATANABE). Preserved in the collection of Mr. T. WATANABE.

Distribution. Tsushima Island.

Early stages. Unknown.

This new species is named in honour of Mr. Toku WATANABE, whose painstaking field survey to Tsushima, made in every months through a year, only enabled to find this nice moth that seems very rare on the island.

The genus *Hybocampa* LEDERER, 1853, is a small-sized genus containing only three Old World species (KIRIAKOFF, 1967, 1968). In having a large black spot below costa this new species is much like *H. microsticta* (SWINHOE) (= *Damatoides baibarana* MATSUMURA), which was correctly placed in this genus by NAKAMURA (1960) under his investigation of the male genitalia. The genus seems to be well characterized by the larval structure, as the caterpillar of *microsticta*, of which an excellent photograph was presented by NAKATOMI (1975), shows a very similar appearance to that of *milhauseri* (FABRICIUS) and *umbrosa* STAUDINGER.

In concluding this paper, I should express my best thanks to Mr. Toku WATANABE, Sendai, for his kindness in permitting me to use his rich collection.

References

- KIRIAKOFF, S. G., 1967. Lepidoptera Familia Notodontidae. Pars secunda. Genera Palaeartica. In WYTSMAN, *Genera Insectorum*, **217B**: 153-156.
- 1968. Lepidoptera Familia Notodontidae. Pars tertia. Genera Indo-Australica. *Ibid.*, **217C**: 224-226.
- NAKAMURA, M., 1960. Third notes on nomenclature of some Notodontid-species (Lep.). *Trans. Lep. Soc. Japan*, **11**: 34-38.
- NAKATOMI, K., 1975. "Yôchû Shinshi-roku" [Caterpillars in illustration], (50). *Gekkan-Mushi*, (49): 2.

Kontyû, Tokyo, **45**(1): 11. March 25, 1977

A Record of *Anterhynchium flavomarginatum micado* KIRSCH (Hymenoptera, Vespidae) from Central Region of Hokkaido

Naoyuki ENDOU

Anterhynchium flavomarginatum micado KIRSCH is known to inhabit in Hakodate region, the southern part of Hokkaido, but, as far as I know, there is no record of this species from central part of Hokkaido including Sapporo and Otaru regions.

I collected one female of this wasp, who was making her nest on the outer surface of a building located near the sea shore of Shyukutsu-kaigan, Otaru city in July, 1975. In the same locality, I had seen one adult of this species in July, 1971, though I could not catch it at that occasion.

I would like to express my hearty thanks to Dr. Yoshihiko KUROSAWA, National Science Museum of Japan, for identification of the specimen, and also to Dr. Ryosuke ISHIKAWA, Assistant Professor of Science Division, Tokyo Metropolitan University, for his advice.