

*Jpn. J. Ent.*, 58 (2): 275–291. June 25, 1990

## Chrysomelid Beetles of Nepal, Northeastern India and Western Sikkim Collected by the Himalaya Expeditions of the National Science Museum, Tokyo

(Part 2)<sup>1)</sup>

Haruo TAKIZAWA

Araisono 4-7-5-502, Sagamihara, Kanagawa, 257 Japan

**Abstract** The subfamily Galerucinae (Coleoptera, Chrysomelidae) collected by the National Science Museum Expeditions to Nepal 1981 and to W. Sikkim 1983 are examined. A total of 82 species including 5 new species, *Lochmaea singalilaensis*, *Dercetina fulvomaculata*, *Paridea darjeelingensis*, *Mimastra aptera* and *Exosoma tomokunii* n. spp., are enumerated. *Doryxena shiva* MAULIK, 1936, is transferred to the genus *Doryxenoides* LABOISSIÈRE.

This is the 2nd report on chrysomelid beetles of Nepal, NE. India and W. Sikkim which were collected by the National Science Museum Expeditions to Nepal 1981 and to W. Sikkim 1983. Eighty-two species of the subfamily Galerucinae are enumerated in this report including 5 new species: *Lochmaea singalilaensis*, *Dercetina fulvomaculata*, *Paridea darjeelingensis*, *Mimastra aptera* and *Exosoma tomokunii* n. spp. *Doryxena shiva* MAULIK, 1936, is transferred to the genus *Doryxenoides* LABOISSIÈRE.

All the specimens including holotypes are deposited in the collection of the National Science Museum (Nat. Hist.), Tokyo, except for some duplicates kept by the author.

### Enumeration

1. *Periclitena vigorsi* (HOPE, 1831)  
C. Nepal — 2 exs., Rani Ban, Kathmandu, 29.X.1981, M. TOMOKUNI (MT) & Y. NISHIKAWA leg.
2. *Doryxenoides shiva* (MAULIK, 1936), n. comb. (Fig. 2)  
NE. India — 1 ex., Tiger Hill, Darjeeling Dist., 8.XI.1981, MT; 1 ex., Kalapokhri, Singalila Dara, Darjeeling Dist., 2.X.1983, MT.

As this species has the metasternal process not produced, it should be placed in the present genus. Dr. KIMOTO of Kurume Univ. kindly examined the shape of metasternal process of the type specimen at the British Museum (Nat. Hist.).

3. *Zangastra nitidicollis* CHEN et JIANG, 1981

1) Part 1, *Jpn. J. Ent.*, 57: 319–332, 1989.

- W. Sikkim — 3 exs., Bakkhim nr. Yuksam, 12.IX.1983, M. SAKAI (MS) leg.
4. *Zangastra nepalensis* TAKIZAWA, 1988  
W. Sikkim — 1 ex., Choka nr. Yuksam, 23.IX.1983, MS.
  5. *Zangastra* sp. 1  
NE. India — 1 ex., Darjeeling, W. Bengal, 7-8.IX.1983, MS.
  6. *Zangastra* sp. 2  
W. Sikkim — 1 ex., Choka-Phithang, 14.IX.1983, MT.
  7. *Menippus cervinus* (HOPE, 1831)  
C. Nepal — 1 ex., Kathmandu, 16.IX.1981, MS.
  8. *Atysa marginata* (HOPE, 1831)  
C. Nepal — 2 exs., Banthanti-Baichi Kharka, Parbat Dist., 17.X.1981, MT.
  9. *Galerucella birmanica* (JACOBY, 1889)  
C. Nepal — 14 exs., Banthanti betw. Ghorapani & Ghandrung, 16.X.1981, MS; 4 exs., Ghorapani betw. Pokhara & Jomosom, 15.X.1981, MS. W. Nepal — 1 ex., Jaljale Khola V. nr. Jumla, 30.IX.1981, MS; 1 ex., Singa-Jillya Chaur, 29.IX.1981, MS; 4 exs., Chautha-Bhulbhule nr. Jumla, 23.IX.1981, MS.
  10. *Pyrrhalta darjeelingensis* KIMOTO, 1979 (Fig. 1 c)  
NE. India — 14 exs., Jaubari-Gairibas, Singalila Ridge, W. Bengal, 1.X.1983, MT & MS; 13 exs., Gairibas, 7.XI.1981, 1, 6.X.1983, MT & MS; 2 exs., Sonada-Bagora, Darjeeling Dist., 8.X.1983, MS; 5 exs., Bagora nr. Kurseong, W. Bengal, 9.XI.1981, MT & MS. C. Nepal — 1 ex., Ulleri nr. Ghorapani, 14.X.1981, MS; 4 exs., Banthanti-Baichi Kharka, Parbat Dist., 16.X.1981, MT; 1 ex., Mayathanti-Ghorapani, Parbat Dist., 15.X.1981, MT; 2 ex., Kiumrung-Ghandrung, Parbat Dist., 22.X.1981, MT; 1 ex., Siwapuri Dara, 7.X.1981, MT. W. Sikkim — 1 ex., Bakkhim-Choka nr. Yuksam, 25.IX.1983, MS.  
*Distribution.* W. Sikkim\*, Nepal\*, N. India.
  11. *Pyrrhalta digambara* (MAULIK, 1936)  
NE. India — 1 ex., Kalapokhri, Singalila Dara, Darjeeling Dist., 2.X.1983, MT.
  12. *Pyrrhalta maculata* GRESSITT et KIMOTO, 1963  
NE. India — 1 ex., Tonglu, Singalila Dara, Darjeeling Dist., 2.X.1983, MT.
  13. *Pyrrhalta* sp.  
W. Sikkim — 1 ex., Bakkhim-Choka nr. Yuksam, 25.IX.1983, MS.
  14. *Lochmaea maculata* KIMOTO, 1979 (Fig. 1 b)  
NE. India — 5 exs., Gairibas, Singalila Ridge, 29.X.1981, 6.X.1983, MT, MS & Y. NISHIKAWA leg.; 1 ex., Jaubari-Gairibas, Singalila Ridge, 1.X.1983, MS; 1 ex., Sonada-Bagora, Darjeeling Dist., 8.X.1983, MS; 1 ex., Chitre, Singalila Ridge, W. Bengal, 7.X.1983, MS; Bengal, 7.X.1983, MS; 1 ex., Tiger Hill, Darjeeling Dist., 10.X.1983, MS.
  15. *Lochmaea singalilaensis* n. sp.  
*Distribution.* NE. India

---

\* Newly recorded from the area.

16. *Galeruca indica* BALY, 1878  
C. Nepal — 1 ex., Ghorapani-Bhanjyang, Parbat Dist., 6.X.1983, MT. W. Nepal — 1 ex., Pina betw. Jumla & Rara Lake, 24.IX.1981, MS; 1 ex., Damphe Lekh above Neurgar, Jumla Dist., 22.IX.1981, MT; 1 ex., Bhulbhule betw. Jumla & Rara Lake, 23.IX.1981, MS.
17. *Pseudadimonia variolosa* (HOPE, 1831)  
NE. India — 14 exs., Darjeeling, W. Bengal, 27, 28.IX.1983, MS & MT. C. Nepal — 1 ex., Kakani nr. Kathmandu, 17.IX.1981, MS; 1 ex., Godavari nr. Kathmandu, 16.IX.1981, MS; 2 exs., Landrung-Damphus nr. Pokhara, 23.X.1981, MS; 2 exs., Chumrung-Kiumrung nr. Ghandrung, 22.X.1981, MS.
18. *Apophyllia aeruginosa* (HOPE, 1831)  
NE. India — 2 exs., Tonglu, Singalila Dara, Darjeeling Dist., 6.X.1983, MT.  
These specimens are characterized by wholly black body with reddish violaceous elytra, and are slightly different from the nominotypical form which has the legs and antenna partly brown and has the elytra metallic bluish green with lateral margin narrowly golden.  
*Distribution.* NE. India\*, Nepal.
19. *Apophyllia nilakrishna* MAULIK, 1936 (Fig. 1 g)  
W. Nepal — 3 exs., Chautha-Bhulbhule nr. Jumla, 23.IX.1981, MS; 1 ex., Jumla, 19.IX.1981, MS; 2 exs., Damphe Lekh 3,660 m-Neurgar nr. Jumla, 22.IX.1981, MS; 3 exs., Damphe Lekh above Ghughuti, Jumla Dist., 22.IX.1981, MT; 1 ex., Rara Lake, 26.IX.1981, MS; 1 ex., Jaljale, Jumla Dist., 30.IX.1981, MT; 1 ex., Jaljale Khola V., Jumla Dist., 30.IX.1981, MT; 1 ex., Ghaci Lagna, Mugu Dist., 24.IX.1981, MT; 1 ex., Jillya Chaur, Jumla Dist., 29.IX.1981, MT; 5 exs., Bumla, Jumla Dist., 23.IX.1981, MT.
20. *Apophyllia* sp.  
NE. India — 1 ex., Manjitar, Darjeeling Dist., W. Bengal, 29.IX.1983, MS.
21. *Dercetina flavocincta* (HOPE, 1831)  
NE. India — 1 ex., Darjeeling, W. Bengal, 27.IX.1983, MS. W. Sikkim — 11 exs., Yuksam, 11.IX.1983, MS.
22. *Dercetina fulvomaculata* n. sp.  
*Distribution.* NE. India.
23. *Dercetina major* KIMOTO, 1970  
NE. India — 6 exs., Manjitar, Darjeeling Dist., W. Bengal, 29.IX.1983, MS; 1 ex., Ramman, 330m, frontier of Sikkim & W. Bengal, 10.IX.1983, MS.
24. *Dercetina mandarensis* (JACOBY, 1900)  
NE. India — 1 ex., Chitre, Singalila Ridge, W. Bengal, 7.X.1983, MS. W. Sikkim — 35 exs., Yuksam, 11, 26.IX.1983, MS & MT; 2 exs., Yuksam-Zomphuk, 11.IX.1983, MT; 1 ex., Zomphuk nr. Yuksam, 25.IX.1983, MS.
25. *Dercetina miniaticollis* (HOPE, 1831)  
NE. India — 2 exs., Manjitar, Darjeeling Dist., 29.IX, 9.X.1983, MS.
26. *Dercetina* sp. 1

- C. Nepal — 1 ex., Landrung-Damphus nr. Pokhara, 23.X.1981, MS.
27. *Dercetina* sp. 2  
C. Nepal — 1 ex., Bilethanti betw. Pokhara & Ghorapani, 13.X.1981, MS.
28. *Arthrothus pallidus* LABOISSIÈRE, 1932  
NE. India — 4 exs., Manjitar, Darjeeling Dist., W. Bengal, 29. IX, 9.X.1983, MS.  
C. Nepal — 1 ex., Kakani nr. Kathmandu, 17.IX.1981, MS.
29. *Arthrotus persimilis* KIMOTO, 1977  
NE. India — 1 ex., Manibhanjyang, Singalila Dara, Darjeeling Dist., 7.XI.1981, MT. C. Nepal — 2 exs., Birethanti, Kaski Dist., 13.X.1981, MT; 1 ex., Banjgara, Parbat Dist., 14.X.1981, MT.
30. *Arthrotus* sp. 1  
C. Nepal — 1 ex., Bilethanti, Kaski Dist., 13.X.1981, MT.
31. *Arthrotus* sp. 2  
W. Sikkim — 1 ex., Yuksam, 26.IX.1983, MT.
32. *Arthrotidea rubrica* CHEN et JIANG, 1981  
W. Sikkim — 1 ex., Zomphuk nr. Yuksam, 25.IX.1983, MS.
33. *Dercetisoma concolor* (JACOBY, 1889)  
NE. India — 1 ex., Bagora nr. Darjeeling, W. Bengal, 9.XI.1981, MT. C. Nepal — 1 ex., Chumrung-Kiumrung nr. Ghandrung, 22.X.1981, MS; 1 ex., Landrung-Damphus nr. Pokhara, 23.X.1981, MS; 2 exs., Ghandrung-Landrung, 23.X.1981, MS; 2 exs., Midi-Pothana, 23.X.1981, MT; 2 exs., Chhomorong-Kuldi, Parbat Dist., 18.X.1981, MT; 1 ex., Rani Ban, Kathmandu, 29.X.1981, MT.
34. *Shamshera bennetti* (HOPE, 1831)  
C. Nepal — 1 ex., Godavari nr. Kathmandu, 3.X.1981, MS; 1 ex., Midi, Kaski Dist., 23.X.1981, Y. NISHIKAWA leg.
35. *Aplosonyx scutellatus* (BALY, 1879)  
W. Sikkim — 1 ex., Yuksam, 11.IX.1983, MS.  
*Distribution.* Sikkim\*, Assam.
36. *Sphenoraia bicolor* (HOPE, 1831)  
NE. India — 1 ex., Badamtam nr. Darjeeling, W. Bengal, 29.IX.1983, MT.
37. *Meristata dohrni* (BALY, 1861)  
NE. India — 1 ex., Manibhanjyang, Singalila Dara, Darjeeling Dist., 7.X.1983, MT; 1 ex., Tonglu, Singalila Dara, Darjeeling Dist., 30.IX.1983, MT; 1 ex., Gairibas, Singalila Dara, Darjeeling Dist., 1.X.1983, MT; 10 exs., Darjeeling, 27, 28.IX.1983, MS & MT, 1.XI.1981, S. AË leg.; 1 ex., Chitre, Singalila Ridge, 7.X.1981, MS. W. Sikkim — 1 ex., Yuksam-Zomphuk, 11.IX.1983, MT. C. Nepal — 1 ex., Siwapuri, Kathmandu V., 7.X.1981, MS; 1 ex., Melanche nr. Ghandrung, 17.X.1981, MS.
38. *Meristata pulunini* BRYANT, 1952  
C. Nepal — 1 ex., Nayathanti-Ghorapani, Parbat Dist., 15.X.1981, MT. W. Nepal — 1 ex., Jaljale Khola V., Jumla Dist., 30.IX.1981, MT; 1 ex., Jumla, Jumla Dist., 20.IX.1981, MT; 2 exs., Jhari nr. Rara Lake, 24.IX.1981, MS; 7 exs., Rara Lake, 26.IX.1981, MS; 1 ex., Pina betw. Jumla & Rara Lake, 24.IX.1981, MS; 1 ex.,

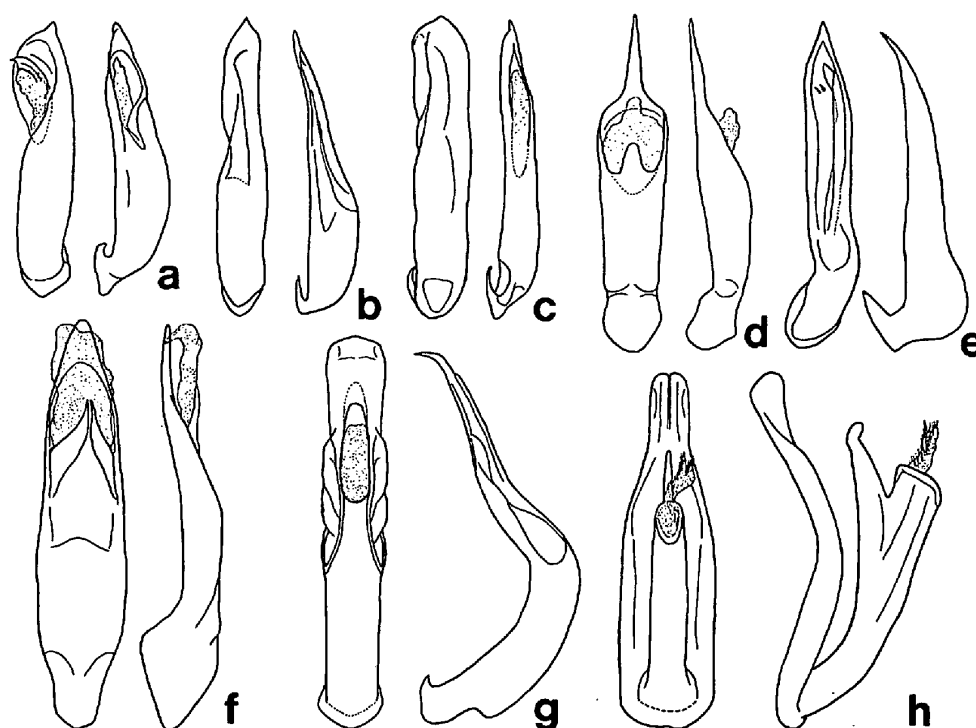


Fig. 1. Aedeagus (left: dorsal view, right: lateral view). — a. *Lochmaea singalilaensis* n. sp. (from Jaubari); b. *L. maculata* KIMOTO (from Gairibas); c. *Pyrrhalta darjeelingensis* KIMOTO (from Bagora); d. *Exosoma tomokunii* n. sp. (from Phithang); e. *Apophyllia sericea* (FABRICIUS) (from Sundarijal, Nepal); f. *Agelopsis coeruleus* (JACOBY) (from Banthanthi); g. *Apophyllia nilakrishna* MAULIK (from Jumla); h. *Liroetis nepalensis* CHŪJŌ (from Bakkhim). Scale for d is  $1\frac{3}{5}$  as large as scale for others.

Neurgar-Chautha nr. Jumla, 23.IX.1981, MS.

39. *Meristata quadrifasciata* (HOPE, 1831)

C. Nepal — 1 ex., Okhreni, Kathmandu, 6.X.1981, MT; 1 ex., Kakani nr. Kathmandu, 15.IX.1981, MS; 1 ex., Damphus Danda, Kaski Dist., 24.X.1981, MT; 1 ex., Kunubhatti, Kaski Dist., 24.X.1981, MT; 1 ex., Landrung, Damphus nr. Pokhara, 23.X.1981, MS; 1 ex., Damphus Dara nr. Pokhara, 23–24.X.1981, MS.

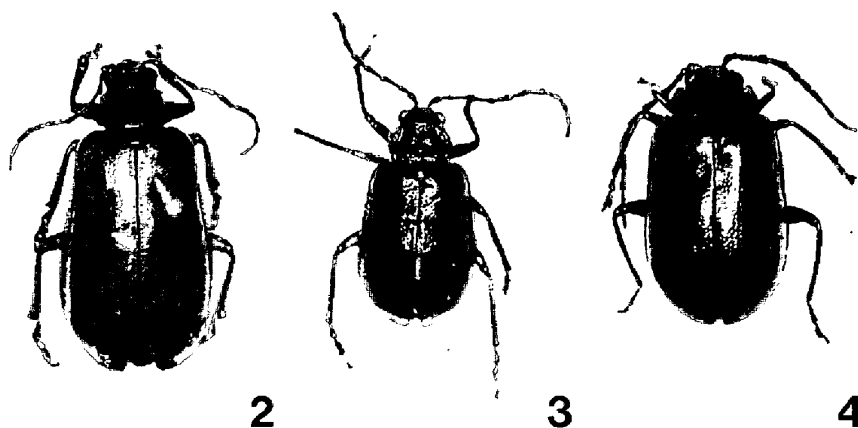
40. *Meristata sexmaculata* (KOLLAR et REDTENBACHER, 1848)

NE. India — 1 ex., Manibhanjyang, Singalila Dara, Darjeeling Dist., W. Bengal, 7.XI.1981, MT; 5 exs., Darjeeling, W. Bengal, 27, 28.IX.1983, MS, 1.XI.1981, S. AE leg.; 1 ex., Chitre, Singalila Ridge, 7.X.1981, MS. W. Sikkim — 1 ex., Bakkhim, 12.IX.1983 (at light), MT.

41. *Meristata trifasciata* (HOPE, 1831)

NE. India — 1 ex., Bagora nr. Darjeeling, 9.XI.1981, MT; 1 ex., Manibhanjyang, Singalila Dara, Darjeeling Dist., 7.XI.1981, MT; 1 ex., Gairibas, Singalila Dara, Darjeeling Dist., 6.X.1983, MT; 8 exs., Darjeeling, W. Bengal, 27, 28.IX.1983, MS & MT; 3 exs., Senchali-Sonada nr. Darjeeling, 8.X.1983, MT & S. AE leg.; 4 exs., Sonada-

- Bagora, Darjeeling Dist., 8.X.1983, MS. C. Nepal — 1 ex., Chhomorong-Kuldi, Parbat Dist., 18.X.1981, MT; 1 ex., Ulleri-Nayathanti, Parbat Dist., 15.X.1981, MT; 1 ex., Phulchoki, Kathmandu V., 11.IX.1981, S. AÆ leg. W. Nepal — 1 ex., Jumla, 20.IX.1981, MS; 1 ex., Jillya Chaur-Chhcal Chaur nr. Singla, 30.IX.1981, MS.
42. *Leptarthra abdominalis* (BALY, 1881)  
NE. India — 3 exs., Darjeeling, 27, 28.IX.1983, MS.
43. *Leptarthra fasciata* (JACOBY, 1894)  
C. Nepal — 1 ex., Kiumrung-Chhomorong, Parbat Dist., 18.X.1981, MT.
44. *Spitiella collaris* (BALY, 1878)  
NE. India — 1 ex., Tonglu-Megma, 7.XI.1981, MS; 2 exs., Bilebhanjyang-Kaiyakata, Singalila Ridge, 5.XI.1981, MS; 1 ex., Bagora nr. Kurseong, Darjeeling Dist., 3.X.1983, MT. C. Nepal — 1 ex., Kuldi-Chumrung nr. Ghandrung, 21.X.1981, MS; 1 ex., Ulleri nr. Ghorapani, 14.X.1981, MS; 1 ex., Kiumrung nr. Ghandrung, 17.X.1981, MS; 1 ex., Ghorapani betw. Pokhara & Jomosom, 15.X.1981, MS; 1 ex., Bhanjyang-Banthanti, Parbat Dist., 16.X.1981, MT. W. Nepal — 1 ex., Chautha-Bhulbhule nr. Jumla, 23.IX.1981, MS; 1 ex., Sinja-Jillya Chaur, 29.IX.1981, MS; 1 ex., Damphe Lekh 3,660m-Neurgar nr. Jumla, 22.IX.1981, MS; 1 ex., Chautha, Jumla Dist., 23.IX.1981, MT; 3 exs., Neurgar, Jumla Dist., 22.IX.1981, MT; 1 ex., Damphe Lekh, 3,000–3,500 m, Jumla Dist., 22.IX.1981, MT.
45. *Nepalogaleruca elegans angustilineata* KIMOTO et TAKIZAWA, 1972  
C. Nepal — 1 ex., Deorali-Kuldi nr. basecamp of Mt. Machhapuchhale, 21.X.1981, MS.
46. *Morphosphaera prava* MAULIK, 1936  
C. Nepal — 1 ex., Rani Ban, Kathmandu V., 29.X.1981, MT.  
*Distribution.* Nepal\*, Assam, Burma.
47. *Aulacophora palliata* (SCHALLER, 1783)  
NE. India — 3 exs., Manjitar, Darjeeling Dist., 29.IX.1983, MS.



Figs. 2–4. — 2, *Doryxenoides shiva* (MAULIK) (from Darjeeling); 3, *Lochmaea singalilaensis* n. sp. (holotype); 4, *Dercetina fulvomaculata* n. sp. (holotype).

48. *Pseudocophora pectoralis* BALY, 1880  
NE. India — 1 ex., Manjitar, Darjeeling Dist., 29.IX.1983, MS.
49. *Paridea darjeelingensis* n. sp.  
*Distribution.* NE. India.
50. *Paridea octomaculata* (BALY, 1886) (Fig. 5 f)  
NE. India — 1 ex., Manibhanjyang, Singalila Dara, Darjeeling Dist., 7.XI.1981, MT. C. Nepal — 2 exs., Landrung-Midi, Kaski Dist., 23.X.1981, MT; 1 ex., Chhomorong-Kuldi, Parbat Dist., 18.X.1981, MT; 4 exs., Kiumrung nr. Ghandrung, 22.X.1981, MS; 1 ex., Kuldi-Chumrung nr. Ghandrung, 21.X.1981, MS; 1 ex., Ghandrung-Landrung, 23.X.1981, MS.
51. *Paridea perplexa* (BALY, 1879) (Fig. 5 d)  
C. Nepal — 2 exs., Kiumrung-Ghandrung, Parbat Dist., 22.X.1981, MT; 3 exs., Landrung-Midi, Kaski Dist., 23.X.1981, MT; 3 exs., Chhomorong-Kuldi, 18.X.1981, MT; 1 ex., Kuldi-Chumrung nr. Ghandrung, 21.X.1981, MS; 1 ex., Kiumrung nr. Ghandrung, 17.X.1981, MS; 9 exs., Chumrung-Kuldi nr. Ghandrung, 18.X.1981, MS. W. Sikkim — 1 ex., Yuksam, 11.IX.1983, MS.
52. *Paridea tetraspilota* (HOPE, 1831) (Fig. 5 b)  
NE. India — 1 ex., Tonglu, Singalila Dara, Darjeeling Dist., 30.IX.1983, MT; 1 ex., Gairibas, Singalila Ridge, 1.X.1983, MS; 1 ex., Kalapokhri, Singalila Ridge, W. Bengal, 2.X.1983, MS; 2 exs., Badamtam nr. Darjeeling, W. Bengal, 29.IX.1983, MT. C. Nepal — 1 ex., Rani Ban, Kathmandu V., 29.X.1981, MT; 2 exs., Nau Danda-Bilethanti, 13.X.1981, MS; 1 ex., Lumle, Kaski Dist., 13.X.1981, MT.
53. *Paridea unifasciata* JACOBY, 1892 (Fig. 5 a)  
NE. India — 5 exs., Sonada-Bagora, Darjeeling Dist., W. Bengal, 8.X.1983, MS; 1 ex., Darjeeling, W. Bengal, 27.IX.1983, MT; 1 ex., Gairibas, Singalila Dara, Darjeeling Dist., 1.X.1983, MT. C. Nepal — 1 ex., Kiumrung-Chhomrong, Parbat Dist., 18.X.1981, MT; 1 ex., Kuldi-Chumrung nr. Ghandrung, 21.X.1981, MS; 1 ex., Kiumrung-Ghandrung, 22.X.1981, MS.
54. *Khasia kraatzii* JACOBY, 1899  
NE. India — 1 ex., Darjeeling, W. Bengal, 27.IX.1983, MT. C. Nepal — 1 ex., Banthanti-Melanche nr. Ghandrung, 17.X.1981, MS; 2 exs., Ulleri-Nayathanti, Parbat Dist., 15.X.1981, MT; 1 ex., Bhanjyang-Banthanti, Parbat Dist., 16.X.1981, MT; 1 ex., Kiumrung-Chhomrong, Parbat Dist., 18.X.1981, MT. W. Sikkim — 3 exs., Prek Chu-Zomphuk, 25.IX.1983, MT; 1 ex., Zomphuk nr. Yuksam, 25.IX.1983, MS.  
*Distribution.* NE. India\*, Nepal, Assam, Burma, Punjab.
55. *Madurasia obscurella* JACOBY, 1896  
C. Nepal — 2 exs., Pokhara, 25.X.1981, MS.  
*Distribution.* Nepal\*, India.
56. *Stenoluperus minor* KIMOTO, 1972  
NE. India — 1 ex., Thakam, Singalila Dara, Darjeeling Dist., 5.X.1983, MT.  
*Distribution.* NE. India\*, Nepal, Bhutan.

57. *Stenoluperus punctata* TAKIZAWA, 1988  
NE. India — 1 ex., Tonglu, Singalila Dara, Darjeeling Dist., 6.X.1983, MT; 2 exs., Tiger Hill, Darjeeling Dist., W. Bengal, 10.X.1983, MS; 1 ex., Darjeeling, W. Bengal, 10.X.1983, MS. W. Sikkim — 7 exs., Choka-Bakkhim, 13, 25.IX.1983, MT & MS; 6 exs., Bakkhim, 12, 13.IX.1983, MT & MS; 2 exs., Choka-Phithang, 14.IX.1983, MT; 1 ex., Prek Chu-Zomphuk, 25.IX.1983, MT; 1 ex., Choka nr. Yuksam, 25.IX.1983, MS.
58. *Agelopsis coeruleus* (JACOBY, 1896) (Fig. 1 f)  
C. Nepal — 1 ex., Ulleri-Nayathanti, Parbat Dist., 15.X.1981, MT; 1 ex., Banthanti-Baichi Kharka, Parbat Dist., 17.X.1981, MT; 5 exs., Deorali-Kuldi nr. basecamp of Mt. Machhapuchhale, 21.X.1981, MS; 3 exs., Ulleri nr. Ghorapani, 14.X.1981, MS; 1 ex., Phedi-Dovan nr. basecamp of Mt. Machhapuchhale, 19.X.1981, MS; 1 ex., Banthanti-Melanche nr. Ghandrung, 17.X.1981, MS.
59. *Japonitata eberti* (KIMOTO, 1970)  
C. Nepal — 1 ex., Okhreni-Mulkharka, Kathmandu V., 8.X.1981, MT.
60. *Hoplasoma unicolor* (ILLIGER, 1800)  
NE. India — 4 exs., Manjitar, Darjeeling Dist., 29.IX.1983, MS; 2 exs., Tista nr. Darjeeling, 9. X. 1893, MT.
61. *Hoplasoma sexmaculata* (HOPE, 1831)  
W. Nepal — 1 ex., Danche Lekh above Ghughuti, Jumla Dist., 22.IX.1981, MT.
62. *Mimastra aptera* n. sp.  
*Distribution.* W. Sikkim.
63. *Mimastra gracilicornis* JACOBY, 1889  
NE. India — 1 ex., Tonglu, Singalila Dara, Darjeeling Dist., 6.X.1983, MT. W. Nepal — 1 ex., Jaljale Khola V., Jumla Dist., 30.IX.1981, MT.  
*Distribution.* N. India\*, Nepal\*, Burma.
64. *Mimastra gracilis* BALY, 1878  
NE. India — 1 ex., Darjeeling, W. Bengal, 28.IX.1983, MS. C. Nepal — 9 exs., Phedi-Dovan nr. basecamp of Mt. Machhapuchhale, 19.X.1981, MS; 15 exs., nr. basecamp of Mt. Machhapuchhale, 19.X.1981, MS. W. Nepal — 3 exs., Damphe Lekh 3,660 m-Neurgar nr. Jumla, 22.IX.1981, MS; 1 ex., Jhari nr. Rara Lake, 24.IX.1981, MS; 4 exs., Jillya Chaur nr. Singa, 29.IX.1981 (at light), MS; 1 ex., Jumla, 19, 20.IX.1981 (at light), MS & MT. W. Sikkim — 8 exs., Choka nr. Yuksam, 23, 24.IX.1983 (at light), MT & MS; 3 exs., Yuksam, 25, 26.IX.1983, MS & MT; 1 ex., Phithang, 23.IX.1983, MT; 1 ex., Bakkhim, 12.IX.1983, MT; 1 ex., Zomphuk nr. Yuksam, 25.IX.1983, MS.
65. *Mimastra* sp.  
W. Sikkim — 1 ex., Bakkhim-Choka, 13.IX.1983, MT.
66. *Liroetis nepalensis* CHÛJÔ, 1965 (Fig. 1 h)  
W. Sikkim — 3 exs., Bakkhim nr. Yuksam, 12.IX.1983, MT & MS; 1 ex., Choka-Bakkhim, 25.IX.1983, MT.  
*Distribution.* Nepal, W. Sikkim\*.



67. *Cneorane* sp.  
C. Nepal — 1 ex., Kakani nr. Kathmandu, 17.IX.1981, MS. W. Sikkim — 1 ex., Bakkhim nr. Yuksam, 13.IX.1983, MS.
68. *Cassena antennata* TAKIZAWA, 1987  
*Distribution.* Nepal.
69. *Monolepta cardoni* JACOBY, 1900  
NE. India — 3 exs., Tista nr. Darjeeling, W. Bengal, 9.X.1983, MT; 2 exs., Manjitar, Darjeeling Dist., 29.IX.1983, MS.
70. *Monolepta conformis* WEISE, 1922  
W. Sikkim — 1 ex., Prek Chu-Zomphuk, 25.IX.1983, MT; 3 exs., Yuksam, 10, 11, 25.IX.1983, MT; 3 exs., Yuksam-Zomphuk, 11.IX.1983, MT.  
*Distribution.* W. Sikkim\*, Nepal, India.
71. *Monolepta godavariensis* TAKIZAWA, 1988  
C. Nepal — 1 ex., Godavari, Kathmandu V., 16.IX.1981, MS.
72. *Monolepta lesagei* TAKIZAWA, 1988  
C. Nepal — 1 ex., Kakani nr. Kathmandu, 17.IX.1981, MS.
73. *Monolepta quadricavata* CHEN, 1976 (Fig. 8)  
*Distribution.* Nepal\*, Tibet.
74. *Monolepta satoi* KIMOTO et TAKIZAWA, 1983  
W. Sikkim — 1 ex., Yuksam, 26.IX.1983, MS.
75. *Monolepta signata* (OLIVIER, 1808)  
C. Nepal — 1 ex., Biretanthi, Kaski Dist., 13.X.1981, MT; 1 ex., Suikhet, Kaski Dist., 12.X.1981, MT. W. Nepal — 7 exs., Jumla, 19.IX.1981, MS & MT; 1 ex., Jumla-Ghughuti, 21.IX.1981, MS.
76. *Atrachya kusamai* TAKIZAWA, 1985  
NE. India — 3 exs., Darjeeling, W. Bengal, 27.IX.1983, MT & MS; 2 exs., Tiger Hill, Darjeeling Dist., 9.IX.1983, MS; 1 ex., Jaubari, Singalila Dara, Darjeeling Dist., 1.X.1983, MT. C. Nepal — 2 exs., Kakani nr. Kathmandu, 15, 17.IX.1981, MS.
77. *Macrima armata* BALY, 1878  
C. Nepal — 1 ex., Ghandrung nr. Pokhara, 22.X.1981, MS; 1 ex., Kiumrung nr. Ghandrung, 17.X.1981, MS.  
*Distribution.* Nepal\*, N. India, Tibet.
78. *Macrima pallida* (LABOISSIÈRE, 1936)  
W. Nepal — 1 ex., Chaudhunga, Mugu Dist., 24.IX.1981, MT. W. Sikkim — 2 exs., Yuksam, 26.IX.1983, MS.  
*Distribution.* W. Sikkim\*, Nepal, Bhutan, N. India.
79. *Calomicrus takagii* TAKIZAWA, 1988  
NE. India — 1 ex., Darjeeling, W. Bengal, 7, 8.IX.1983, MS. C. Nepal — 1 ex., Baichi Kharka, Parbat Dist., 17.X.1981, MT; 1 ex., Chumrung-Kiumrung nr. Ghandrung, 22.X.1981, MS; 1 ex., Ulleri-Nayathanti, Parbat Dist., 15.X.1981, MT. W. Nepal — 1 ex., Damphe Lekh above Ghughuti, Jumla Dist., 22. IX. 1981, MT; 1 ex., Jhari Lekh 2,900–3,000 m, Mugu Dist., 25.IX.1981, MT; 2 exs., Jhari Pass nr. Rara

Lake, 25.IX.1981, MS; 2 exs., Jhari nr. Rara Lake, 24.IX.1981, MS; 1 ex., Bumla, Jumla Dist., 23.IX.1981, MT. W. Sikkim — 2 exs., Yuksam, 11.IX.1983, MS; 6 exs., Bakkhim, nr. Yuksam, 12.IX.1983, MS & MT; 11 exs., Bakkhim-Choka nr. Yuksam, 13.IX.1983, MT; 2 exs., Chusyo nr. Yuksam, 25.IX.1983, MS.

These specimens are variable in coloration. Some have the dorsum with distinct greenish tinge. The abdominal sternites are wholly yellowish brown in some specimens. Judging from the shape of male aedeagus, however, these specimens undoubtedly belong to this species.

80. *Calomicrus yasudai* (CHÛJÔ, 1966)

NE. India — 1 ex., Chitre, Singalila Ridge, W. Bengal, 7.X.1983, MS. C. Nepal — 21 exs., Hinku-Phedi, Parbat Dist., 21.X.1981, MT.

81. *Calomicrus* sp.

W. Sikkim — 1 ex., Thangshing, 21.IX.1983, MT.

82. *Exosoma tomokunii* n. sp.

*Distribution.* W. Sikkim.

### Descriptions of New Species and Notes

#### *Lochmaea singalilaensis* n. sp.

(Fig. 3)

*Male.* Body oblong, widened behind; dirty light brown, with obscure dark patches behind eyes, on scutellum and humerus; antenna dark brownish, basally light brown on each segment; labrum and tibiae basally dark brown; sometimes antenna and tibiae longitudinally streaked with dark brown; dorsum rather shining, sparsely covered with fine pubescence which are composed of recumbent and suberect hairs.

Head as wide as pronotum at apex; vertex longitudinally depressed with shallow punctures; frontal tubercles acutely triangular, distinctly extending between interantennal area, and separated from each other by a deep furrow; surface smooth and shining; frontoclypeus transversely raised and triangularly concave at anterior margin; distance between eyes as wide as the longitudinal diameter of an eye; antenna  $7/8$  as long as body, densely pubescent except on basal segments; each segment distinctly widened to apex; with 3rd and 4th rather abruptly widened near apex; 1st segment robust, as long as 3rd, and  $1\frac{1}{2}$  as long as 2nd; relative lengths of antennal segment as:  $1st \doteq 3rd > 4th > 11th > 5th \doteq 6th \doteq 7th > 2nd \doteq 8th \doteq 9th \doteq 10th$ . Pronotum transverse  $1\frac{1}{2}$  as wide as long, rather straightly widened from base to middle, thence rather roundly narrowed to anterior angle, almost straight but weakly concave on each side at anterior margin; each angle distinctly thickened with a long seta; disc broadly and deeply depressed transversely, and with a deep round depression laterally, with 4 small depressions placed anteromedially, basomedially and on each side of median line; depressed area densely covered with

large, distinct punctures, otherwise disc rather smooth and shining. Scutellum gently convex and rounded at apex, finely granulate basally. Elytra distinctly wider than pronotum at base; each elytron 3 times as long as wide, gently widened from base to apical 1/3; disc weakly raised subbasally with a transverse depression before middle, densely covered with rather shallow and large punctures, the diameter of which is larger than their interspaces; disc somewhat reflexed along lateral margin; humerus convex; epipleuron concave and wide basally, gradually narrowed and tapered out near apex; 5th visible abdominal sternite with a deep triangular depression at apex; aedeagus as shown in Fig. 1 a.

Female slightly larger, with antenna 2/3 as long as body; 5th visible abdominal sternite gently emarginate at posterior margin.

*Size.* Male, 4.5–4.7 mm in length, 2.4–2.6 mm in width; female, 5.3 mm in length, 2.9–3 mm in width.

*Specimens examined.* NE. India — Singalila Dara, Darjeeling Dist.: 2 ♂ (one the holotype, in NSMT, Tokyo), Jaubari, 2,800 m, 1.X.1983, M. TOMOKUNI & M. SAKAI leg.; 1 ♂, Jaubari, 2,800 m-Gairibas, 2,550 m, 1.X.1983, M. SAKAI leg.; 1 ♂, Kalapokhri, 3,000–3,150 m, 2.X.1983, M. TOMOKUNI leg.; 1 ♂ 1 ♀, Gairibas, 2,600 m, 5.XI.1981, M. SAKAI leg., 2,550–2,800 m, 6.X.1983, M. TOMOKUNI leg.; 1 ♀, Tonglu, 3,150 m, 6.X.1983, M. TOMOKUNI leg.

*Note.* This new species is characterized by the finely and sparsely pubescent dorsum and by the strongly depressed pronotum, and is easily distinguished from widely distributed *Lochmaea capreae* (LINNÉ).

### *Dercetina fulvomaculata* n. sp.

(Fig. 4)

*Male.* Body rather flat and oblong, gently narrowed to both ends; shining black with abdominal segments light brownish; elytra black, with a broad yellowish patch from base to apical 1/5 which is occupied by a large oval black area medially; antenna with 3 basal segments stained with brown.

Head distinctly narrower than pronotum at anterior margin; vertex evenly convex, laterally with a few punctures; frontal tubercles transverse, broadly produced between antennal insertions, distinctly raised and separated from each other by a shallow sulcus; frontoclypeus short and triangularly raised, with interantennal ridge broad and flat; eye convex, with its longitudinal diameter 3/4 as long as interocular distance; labial palpi with last segment conical and the penultimate swollen; antenna about 4/5 as long as body, densely pubescent beyond 3rd segment; 1st segment distinctly widened to apex, as long as 2nd and 3rd combined together; 3rd to 9th each widened to apex; 11th bluntly pointed at apex; relative lengths of antennal segment as: 4th > 11th > 5th ≐ 6th ≐ 7th ≐ 8th ≐ 9th > 10th > 1st >> 2nd > 3rd. Pronotum transverse, twice as wide as long, distinctly narrower than elytra at base, widely emarginate at anterior margin, widely and archedly pro-

duced at posterior margin, widest at apical 1/3, thence gently narrowed to both ends; anterior angle broadly produced and the posterior rectangular; disc impunctate and evenly convex, narrowly reflexed at lateral margins, thinly trimmed on both anterior and posterior margins. Scutellum impunctate and broadly triangular, almost as long as wide. Elytron about 3 times as long as wide, subparallel-sided from basal 1/5 to apical 2/3, thence roundly narrowed to apex; disc gently convex, densely covered with distinct punctures, the diameter of which is slightly larger than their interspace, narrowly reflexed at lateral margin; humerus well developed; epipleuron smooth and impunctate, broad basally, gradually narrowed and tapered out near apical 1/5; 5th visible abdominal sternite with a pair of shallow notches on apex.

*Size.* 5 mm in length, 3 mm in width

*Specimen examined.* 1 ♂ (holotype in NSMT, Tokyo), Chitre, 1,380 m, Singalila Ridge, W. Bengal, India, 7.X.1983, M. SAKAI leg.

*Notes.* This new species is characterized by the blackish body with a pair of large yellowish patch on elytra. This pattern of coloration clearly distinguishes this new species from the known Indian congeners.

*Paridea darjeelingensis* n. sp.

(Fig. 6)

*Male.* Body oblong, rather strongly widened behind; shining brown with eyes and venter except for apical half of 5th visible abdominal sternite black.

Head as wide as pronotum at anterior margin; vertex impunctate and shining, shallowly depressed behind frontal tubercles; frontal tubercles transverse, not well demarcated from vertex, acutely extending between antennal insertions; frontoclypeus triangularly raised; labrum widely rounded; antenna 4/5 as long as body, densely pubescent beyond 2nd segment and with sparse suberect hairs; each segment gently widened to apex; 1st segment stout, slightly shorter than 2nd and 3rd combined together; 2nd conical and shortest, slightly longer than half the 3rd; 11th slender, pointed apically and longest, twice as long as 3rd; relative lengths of antennal segment as: 11th >> 8th > 1st > 4th ≐ 5th ≐ 6th ≐ 7th ≐ 9th > 3rd >> 2nd; eyes large with longitudinal diameter 4/5 as long as interocular distance. Pronotum transverse, distinctly narrower than elytra at apex, 1<sup>3</sup>/<sub>10</sub> as wide as long, slightly wider at apex than at posterior margin, widest at apical 2/5, thence straightly narrowed to anterior angle, concavely narrowed to posterior angle; both anterior and posterior angles distinctly thickened; disc impunctate and shining, broadly reflexed along lateral margins, with a broad transverse depression behind middle. Scutellum impunctate and broadly triangular. Elytra distinctly widened from base to apical 1/3, twice as long as wide; disc shining, broadly raised subbasally, with a row of punctures along lateral margin; humerus well developed, demarcated interiorly by a broad depression; epipleuron wide basally and tapered out near

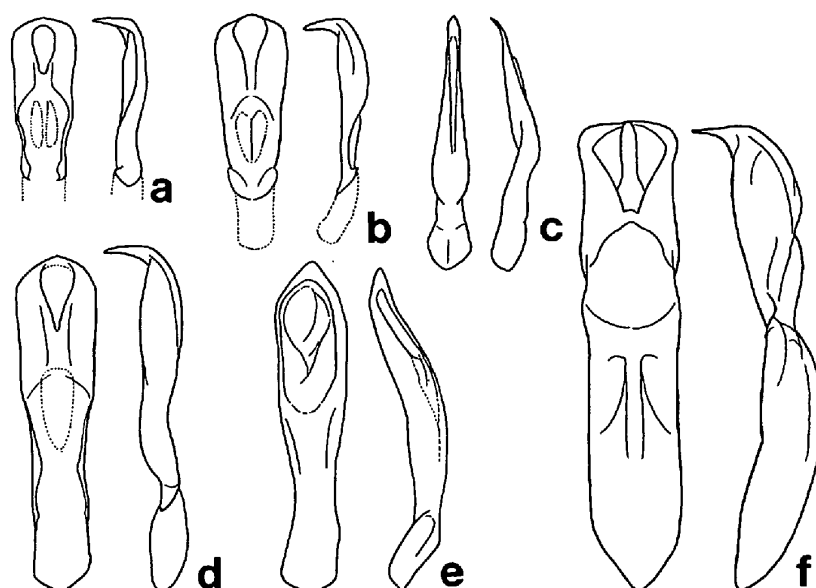


Fig. 5. Aedeagus (left: dorsal view, right; lateral view) of *Paridea* spp. — a, *Paridea unifasciata* JACOBY (from Darjeeling); b, *P. tetraspilota* (HOPE) (from Naudanda); c, *P. bifurcata* JACOBY (from Godavari, Nepal); d, *P. perplexa* (BALY) (from Landrung); e, *P. darjeelingensis* n. sp. (holotype); f, *P. octomaculata* (BALY) (from Manibhanjyang). Scale for c & e is  $1\frac{3}{5}$  as large as scale for others.

apical  $1/5$ ; 5th visible abdominal sternite broadly and longitudinally concave medially, with well-developed subquadrate median lobe; aedeagus asymmetrical, blackish on median part (Fig. 5 e).

*Size.* 7–8 mm in length, 3.7–4 mm in width.

*Specimens examined.* NE. India — Darjeeling Dist., W. Bengal: 1 ♂ (holotype in NSMT, Tokyo), Tonglu, 3,150 m, Singalila Dara, 30.IX.1983, M. TOMOKUNI leg.; 1 ♂, Gairibas, 2,600 m, Singalila Ridge, 1.X.1983, M. SAKAI leg.; 1 ♂, Kalapokhri, 3,020 m, Singalila Ridge, 2.X.1983, M. SAKAI leg.

*Note.* This new species is characterized by rather large body which is wholly yellowish brown with the venter except for the last segment black, and is somewhat similar to *P. livida* DUVIVIER from the Eastern Himalayas. The latter species is, however, clearly distinguished from this new species by the 4th visible abdominal sternite produced behind into a moderately long subtriangular lobe.

#### *Mimastra aptera* n. sp.

(Fig. 7)

*Male.* Body rather slender, weakly widened behind; elytra slightly abbreviated and pygidium exposed; apterous; pale yellowish white with head, antenna, femora apically, tibiae basally and tarsi dark brown; metathorax and abdomen

dark brown.

Head large, as wide as pronotum; postocular area as long as pronotum, smooth and shining, with a shallow depression behind frontal tubercles, with sparse erect hairs; frontal tubercles oblong, delimited behind by a distinct sulcus, contiguous to each other; frontoclypeus transverse and short; eye rather small and convex, with its longitudinal diameter less than half the interocular distance; antenna pubescent and slender, 9/10 as long as body; 1st segment club-shaped, almost twice as long as 2nd; 4th longest, slightly longer than 2nd and 3rd combined together; relative lengths of antennal segment as: 4th > 5th > 1st  $\doteq$  6th > 7th > 8th > 9th  $\doteq$  11th > 3rd > 10th > 2nd. Pronotum reversed trapezoidal, 1 $\frac{1}{2}$  as wide as long, slightly narrower than elytra at base, straight and immarginate at anterior margin, weakly sinuate on posterior margin, straightly narrowed from base to apex; anterior angle obscure, the posterior with a large setigerous pore; disc irregularly and obscurely depressed, with surface somewhat mat. Scutellum large, roundly triangular, weakly depressed longitudinally. Elytron subparallel-sided, widely and gently rounded at apex, 4 times as long as wide, disc densely covered with irregular, shallow punctures, and weakly wrinkled, with sparse suberect hairs, narrowly margined at suture and at lateral margin; humerus not developed; epipleuron gradually narrowed from base and tapered out at apical 1/5. Abdomen with last visible sternite truncate at apex; pygidium exposed and roundly triangular at apex; legs slender and long; hind tibia 1 $\frac{1}{2}$  as long as protibia, with 1st tarsal segment almost 1/2 as long as tibia.

*Female.* Eye smaller, with its longitudinal diameter 2/5 as long as interocular distance; antenna 4/5 as long as body; relative lengths of antennal segment somewhat variable; elytron gently widened behind, 2 $\frac{3}{5}$  as long as wide; humerus weakly developed; hind wing vestigial; hind tibia distinctly longer than twice length of 1st tarsal segment.

*Size.* Male, 4.8 mm in length, 2.2 mm in width; female, 5.4–6.9 mm in length, 2.1–2.4 mm in width.

*Specimens examined.* 1♂ (holotype in NSMT, Tokyo) 1♀, Dzongri, 3,970 m, W. Sikkim, 17.IX.1983, M. SAKAI leg.; 2♀, Phithang, 3,660 m, W. Sikkim, 23.IX.1983, M. TOMOKUNI leg.

*Note.* This new species is characterized by elytron abbreviated and by pygidium largely exposed, accompanied with apterous or micropterous condition. These characters are sufficient to distinguish this new species from the known congeners.

*Monolepta quadricavata* CHEN, 1976

(Fig. 8)

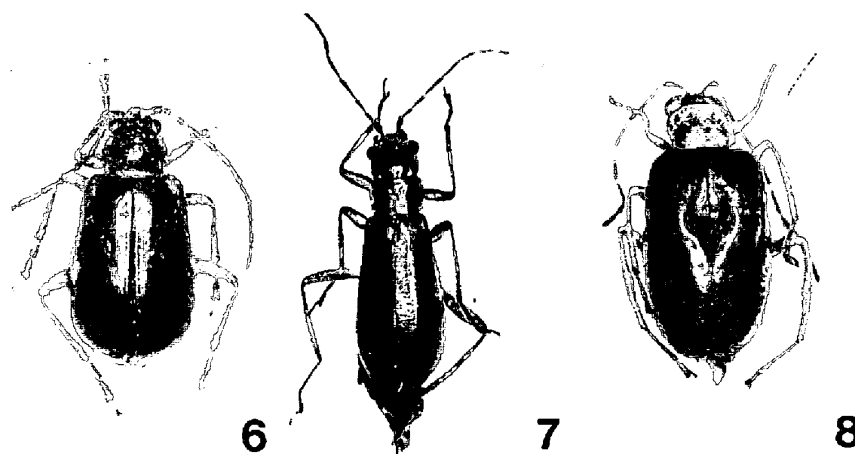
CHEN, S., 1976, Acta ent. Sin., 19: 205–206, 218.

*Male.* Body slightly widened behind, lustrous yellowish brown; head black;

antenna infuscate on 5 apical segments; elytra with reddish tinge; pygidium with blackish spot at apex.

Head slightly narrower than pronotum at apex; vertex impunctate, finely and transversely wrinkled; frontal tubercles triangular and smooth, contiguous to each other; eye large and convex, with transverse diameter  $\frac{2}{3}$  as long as interocular distance; antenna slightly longer than body, densely pubescent beyond 2nd segment, somewhat thick on 4th to 11th; 11th longest,  $1\frac{1}{3}$  as long as 10th; relative lengths of antennal segment as:  $11\text{th} > 5\text{th} \doteq 6\text{th} \doteq 8\text{th} \doteq 9\text{th} > 1\text{st} \doteq 7\text{th} \doteq 9\text{th} > 4\text{th} \gg 3\text{rd} > 2\text{nd}$ . Pronotum distinctly narrower than elytra at base, quadrate,  $1\frac{1}{2}$  as wide as long, gently produced and sinuate on posterior margin, rather linearly and weakly narrowed posteriorly on lateral margins; posterior angle rectangularly produced; disc obscurely depressed transversely near middle, rather densely covered with fine punctures. Scutellum broadly triangular and impunctate. Elytron 3 times as long as wide, widest near middle, thence slightly narrowed to humerus and roundly so to apex; disc with a deep suboval excavation along suture near basal  $\frac{1}{2}$ , which starts behind scutellum and becomes deeper posteriorly; excavations on both elytron forming a reversed heart-shape; disc with fine erect hairs posteriorly, densely covered with fine punctures, except on excavated area, which is stained with brownish tinge; last visible abdominal sternite deeply trilobed, with the median lobe depressed; aedeagus with long acute projection apically; middle and hind tibiae densely covered with suberect hairs; the latter weakly inflated inwards at middle, where it is covered with longer hairs and with a long orifice-like incisions.

Female with antenna much slender; elytra broadly and transversely depressed behind scutellum; last visible abdominal sternite simple and with a blackish spot apically; hind tibiae simple.



Figs. 6-8. — 6, *Paridea darjeelingensis* n. sp. (holotype); 7, *Mimastrea aptera* n. sp. (from Phithang); 8, *Monolepta quadricavata* CHEN (from Kakani).

*Size.* 4.5–4.8 mm in length, 2.3–2.4 mm in width in both sexes.

*Specimens examined.* 1 ♂, 2 ♀, Kakani nr. Kathmandu, 2,000 m, C. Nepal, 15.IX.1981, M. SAKAI leg.

*Note.* CHEN stated in the short original description that this species is easily separated from its congeners by the presence of two deep kidney-shaped excavations on each elytron before the middle. Though the present specimens have only one excavation on each elytron, I tentatively treated these as *quadricavata*. In other respects, these specimens agree well with CHEN's description, particularly in the coloration and characteristic shape of the hind tibia.

*Exosoma tomokunii* n. sp.

*Male.* Body small, slender and oblong, slightly widened behind; blackish blue with weak greenish luster; abdomen light yellowish brown; apterous.

Head narrower than pronotum at anterior margin; vertex convex, shining and impunctate; frontal tubercles rather triangular, bluntly extending between antennal insertions, distinctly raised and straightly delimited behind by distinct linear depression, contiguous to each other; surface impunctate and shining; frontoclypeus rather broad between antennal insertions, and impunctate; eye convex with its longitudinal diameter less than half the width of interocular distance; antenna 9/10 as long as body, densely covered with yellowish hairs beyond 2nd segment, slightly widened to apex; 1st segment stout, twice as long as 2nd; 5th longest, less than twice the 6th; relative lengths of antennal segment as: 5th  $\doteq$  7th  $\doteq$  11th > 6th  $\doteq$  9th  $\doteq$  10th > 1st  $\doteq$  8th > 4th > 3rd > 2nd; labial palpus with penultimate segment oblong and flat, the last long conical. Pronotum transverse, 1½ as wide as long, slightly emarginate at anterior margin, broadly produced at posterior margin, widest near apical 1/3, thence roundly narrowed to anterior angle, rather sinuately so to posterior angle; both anterior and posterior angles obtusely thickened; disc gently convex, smooth and shining, sparsely covered with fine obscure punctures. Scutellum smooth, rounded at apex. Elytra distinctly wider than pronotum at base; elytron rather flat, 2⅔ as long as wide, widest slightly behind middle, thence roundly narrowed to apex, and gently so to base; apex separately rounded; disc gently depressed behind scutellum, shining and densely covered with distinct punctures, the diameter of which is wider than their interspace, with fine erect hairs on latero-apical portion; interspace smooth and shining, with fine punctures; suture margined on apical 1/3; humerus weakly developed; epipleuron wide on basal 1/3, thence gradually narrowed and tapered out near apex; surface impunctate; legs comparatively long and stout; last visible abdominal sternite weakly notched on both sides of median lobe; aedeagus with a long acute projection at apex (Fig. 1 d).

Female with last visible abdominal sternite simple at apex; in present specimens abdomen inflated with eggs and largely extending beyond apices of elytra.



*Size.* 3–3.6 mm in length, 1.4–2 mm in width in both sexes.

*Specimens examined.* 2 ♂ (one the holotype in NSMT, Tokyo) 3 ♀, Phithang, 3,660 m, W. Sikkim, 23.IX.1983, M. TOMOKUNI leg.

*Note.* This new species is characterized by the relatively small, flat body which has vestigial wings. *Apteromicrus flavipes* CHEN et JIANG from Xizang, China, may be similar to this new species, but has the pronotum indistinctly margined on both anterior and posterior margins and the underside black with red-brown legs.

### Selected Literature

- MAULIK, S., 1936. Chrysomelidae (Galerucinae). In the *Fauna of British India*, 648 pp. Taylor & Francis, London.
- TAKIZAWA, H., 1988. Notes on chrysomelid beetles (Coleoptera, Chrysomelidae) of India and its neighboring areas. Part 7. *Kontyû, Tokyo*, 56: 534–552.