

## Description of a new chrysomelid-beetle from Japan

MICHIO CHÛJÔ

Subfamily Galerucinae

*Lochmaea* (*Tricholochmaea*) *takeii* sp. nov.

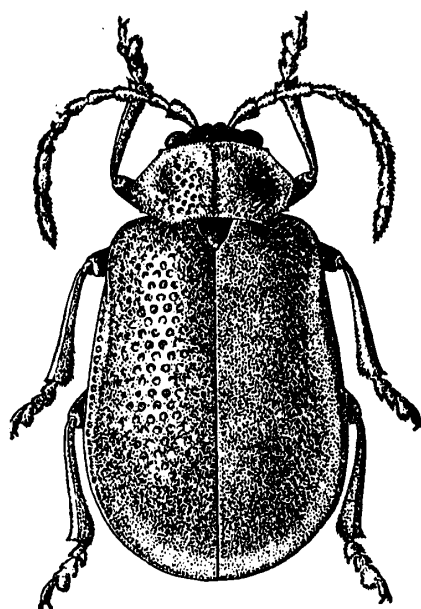
Body oval, finely shagreened and pubescent on the whole surface, the pubescence silvery grey in one light, but golden yellow in another. Head black, with mouth-parts dark reddish brown to piceous or pitchy black; front face of clypeus, frontal tubercles and median area of vertex rather dark reddish. Antennae black in general, but 1st and 3rd segments stained with dark brown at their apices, and 2nd one entirely dark brown. Pronotum, scutellum and elytra reddish brown, with basal area of scutellum infuscated. Underside and legs black, with tibiae and tarsi reddish brown.

Head inserted into prothorax at the level of the posterior margin of eyes, much narrower than pronotum. Labrum more than twice as broad as it is long, slightly emarginate at the front margin, rounded at the front corners; the surface gently transversely convex, smooth, shining and furnished with a transverse row of setigerous punctures. Clypeus elevated into a triangular cone, with each edge sharp; of the front slant impunctate, smooth and shining, with the exception of a transverse row of setigerous punctures along the front margin, the latter straight; the lateral slants very finely pubescent-punctulate, with their interstices shagreened and opaque. Genae not strongly developed. Inter-antennal area narrow, shagreened, opaque and longitudinally ridged at the middle. Frontal tubercles consisted from four elevated areas, finely shagreened, subopaque, impunctate and glabrous.

Vertex and frons moderately convex, but depressed at the middle just behind the frontal tubercles, coarsely and rather rugosely pubescent-punctate throughout, with their interstices finely shagreened and opaque.

Antennae nearly half as long as the body (♀), rather robust, very finely and thickly pubescent, with exception of the basal segments which are more sparsely pubescent; 1st segment clubate, distinctly longer than any one of the nine followings, 2nd the smallest, 3rd distinctly longer than the 4th, the latter nearly equal to the 5th, 6th to 10th subequal to one another and each one of them rather shorter than the 5th, 11th nearly equal in length to the 1st and pointed at

the apex. Pronotum rather more than  $2\frac{1}{2}$  times as broad as long; front margin slightly emarginate; front and basal corners forming a setigerous denticle at each tip; side margins sharply ridged, subacutely angulate just before the middle; basal margin broadly obliquely emarginate on each side and slightly emarginate between them; dorsum gently convex from one side to another, with a large fovea on each lateral area and a shallow longitudinal impression on the middle, strongly and rather coarsely pubescent-punctate throughout, with their interstices very



*Lochmaea* (*Tricholochmaea*)  
*takeii* Chûjô, sp. nov.

finely and feebly shagreened and subopaque.

Scutellum obtrigonal, with apex rounded; dorsum thickly pubescent-punctate throughout, with their interstices finely shagreened and subopaque.

Elytra much wider at the base than pronotum, gradually widened posteriorly, lightly constricted on each side between the base and

middle, rounded at the apex; dorsum strongly convex, with lateral areae distinctly reflexed against the dorsal convexure, strongly and thickly and regularly pubescent-punctate throughout, with their interstices finely shagreened and subopaque, but the latero-marginal areae narrowly rimed, impunctate, smooth and glabrous; elytral epipleurae broad, horizontal, gradually narrowed from the middle to near apex and disappeared at the apical part, with its surface longitudinally hollowed, alutaceous and very finely pubescent-punctulate.

Underside and legs finely pubescent-punctulate, with their interstices very finely strigose. Underside strongly convex; acetabulae open behind; last abdominal sternite simply rounded at the posterior margin. Legs rather robust and short; tibiae longitudinally hollowed on the outer surface and unarmed the spur; tarsi with 3rd segment longitudinally split at the middle; claws bifidate, with inner tooth much shorter than the outer one.

Length: 5.25mm. width: 3.0mm.

*Loc. Distr.* Numata-machi, Tone-gun, Gumma-ken, Honshu (1♀, *Holotype*, T. Takei leg.).

*Gen. Distr.* Japan.

The present species may easily be distinguished from *Lochmaea* (*Tricholochmaea*) *semifulva* (Jacoby) as follows:

Body much larger and robuster, antennae and scutellum not entirely black, pronotum and elytra much more strongly but more sparsely punctate, pronotum not maculated with black, abdomen not yellowish brown, and legs not entirely black.

The type-specimen is preserved in the author's cabinet.